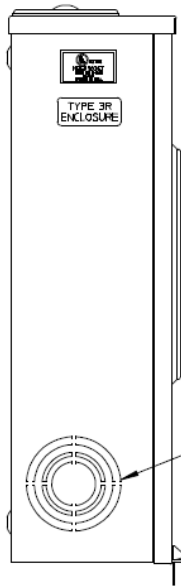
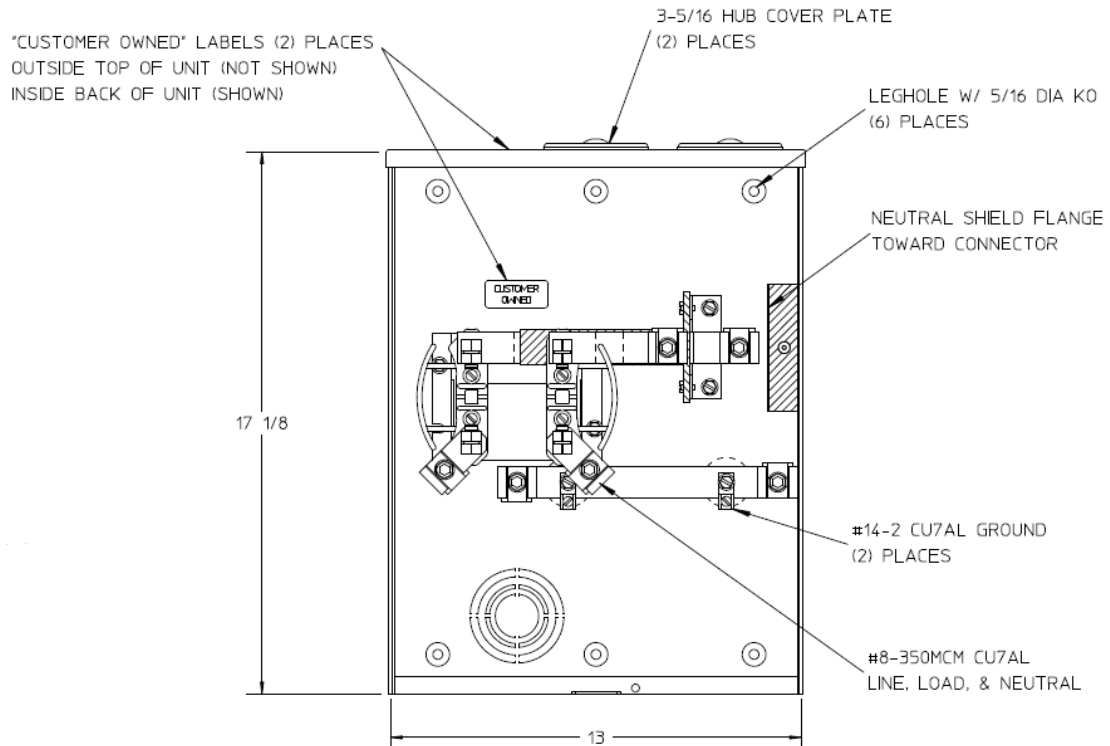


Left Side View



2-1/2, 2, 1-1/2, 1-1/4, 1 KO
(3) PLACES

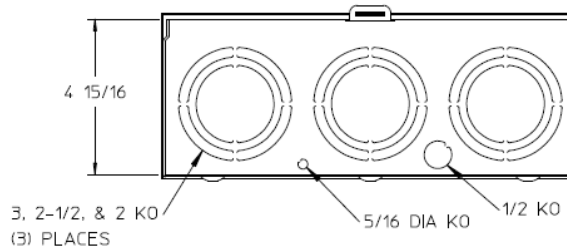
Front View




Notes

- 1) 200 AMP CONTINUOUS,
600 VAC, 1 PHASE, 3 WIRE
- 2) CABINET: 16 GA GALVANIZED STEEL
- 3) FINISH: GRAY
- 4) INHIBITOR SUPPLIED ON CONNECTORS
- 5) TEMPORARY CARDBOARD METER OPENING COVER PROVIDED
- 6) MIDWEST LABEL ATTACHED TO THE END OF THE CARTON
- 7) MIDWEST LOGO LOCATED IN THE LOWER LEFT-HAND CORNER OF THE FRONT
- 8) STACK FLAT ON 36 X 48 PALLET.
(DO NOT STACK ON SIDES)

Bottom View





METER SOCKET – (1) 200A 600V 1P3W N3R G90 TRIPLEX GRD SML HUB COVER PLT 4-TERMINAL TOP /BOT FED

CAT NO	DWG DATE	REV #
MEPKR1DH1DQRZ	08/23/2016	01