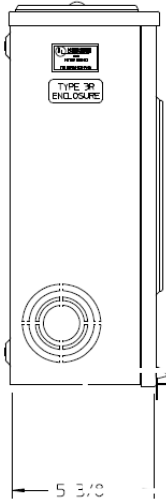
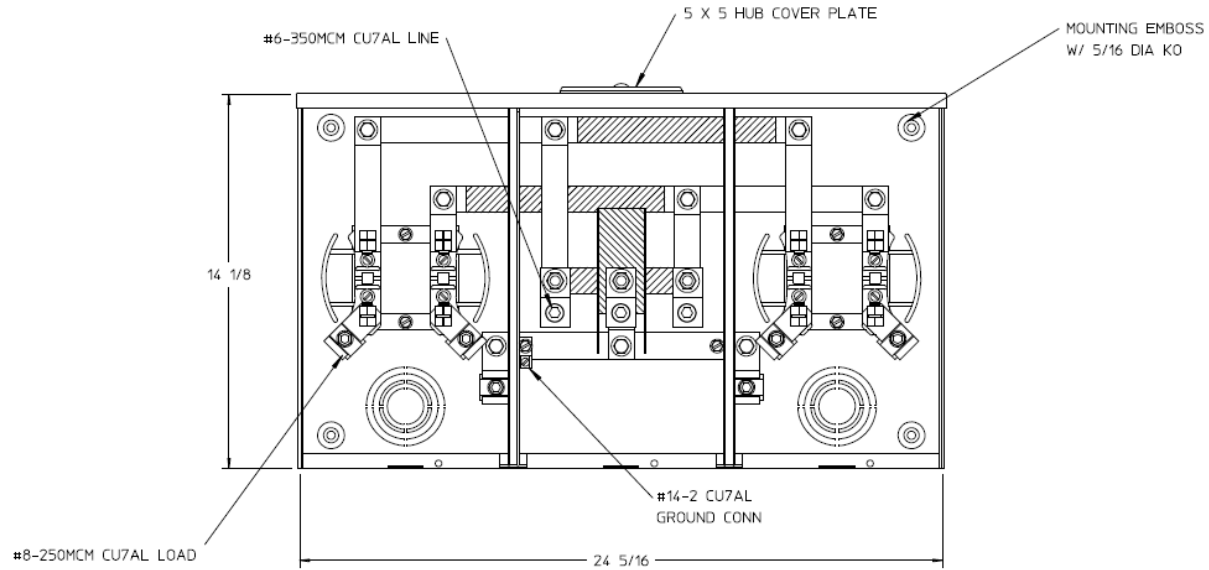


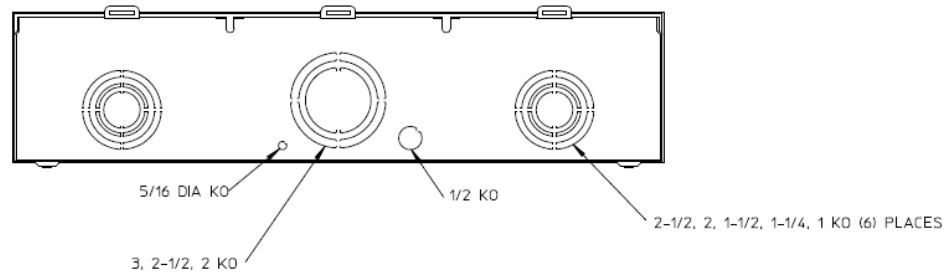
**Side View**



**Front View**




**Bottom View**



**Notes**

- 1) FINISH: GRAY
- 2) CABINET: 16 GA GALV STEEL
- 3) 200 AMP CONTINUOUS PER POSITION  
600 VAC, 1 PHASE, 3-WIRE  
250 AMP CONTINUOUS (TOTAL) UNIT RATING
- 4) TEMPORARY CARDBOARD METER OPENING COVER PROVIDED.
- 5) MIDWEST LABEL ATTACHED TO THE END OF THE CARTON.
- 6) MIDWEST LOGO LOCATED IN LOWER LEFT HAND CORNER OF THE FRONT.
- 7) STACK FLAT ON 36 X 48 PALLET.  
(DO NOT STACK ON SIDES)



HORIZ GANGED METER SKTS-(2) 200A 600V N3R 1P3W  
LARGE HUB CVR PLT TPLX GRD 4-TRM CENTER FED G90

CAT NO	DWG DATE	REV #
MEPKR2CS1ET	08/23/2016	01