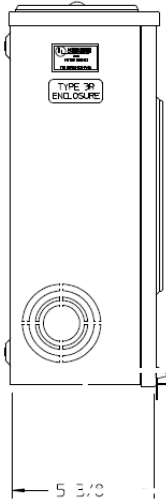
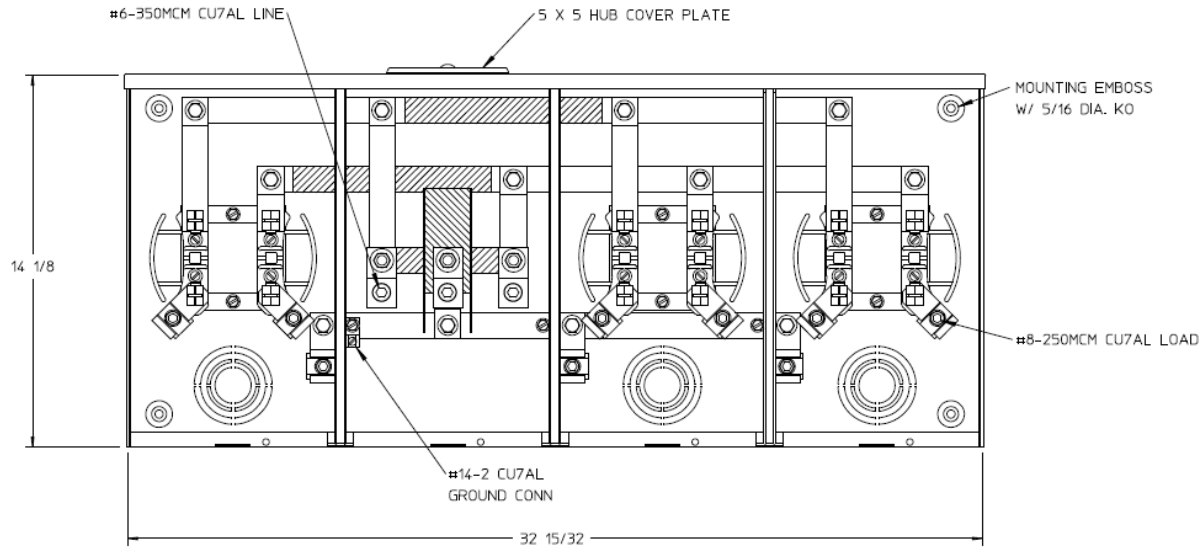


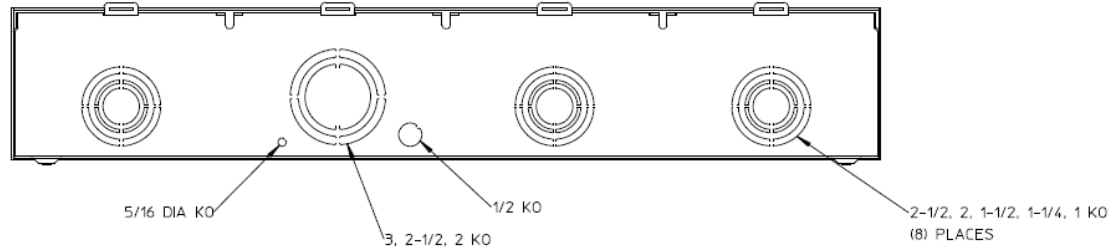
### Side View



### Front View




### Bottom View



### Notes

- 1) FINISH: GRAY
- 2) CABINET: 16 GA GALV STEEL
- 3) 200 AMP CONTINUOUS PER POSITION  
600 VAC, 1 PHASE, 3-WIRE  
300 AMP CONTINUOUS (TOTAL) UNIT RATING WITH CU  
250 AMP CONTINUOUS (TOTAL) UNIT RATING WITH AL
- 4) TEMPORARY CARDBOARD METER OPENING COVER PROVIDED.
- 5) MIDWEST LABEL ATTACHED TO THE END OF THE CARTON.
- 6) MIDWEST LOGO LOCATED IN LOWER LEFT HAND CORNER OF THE FRONT.
- 7) STACK FLAT ON 36 X 48 PALLET.  
(DO NOT STACK ON SIDES)



HORIZ GANGED METER SKTS-(3) 200A 600V N3R 1P3W  
LARGE HUB CVR PLT TPLX GRD 4-TRM CENTER FED G90

CAT NO	DWG DATE	REV #
MEPKR3CS1ET	08/23/2016	01