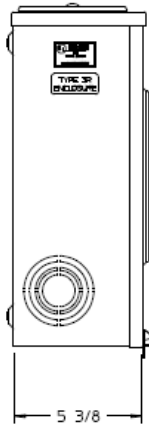
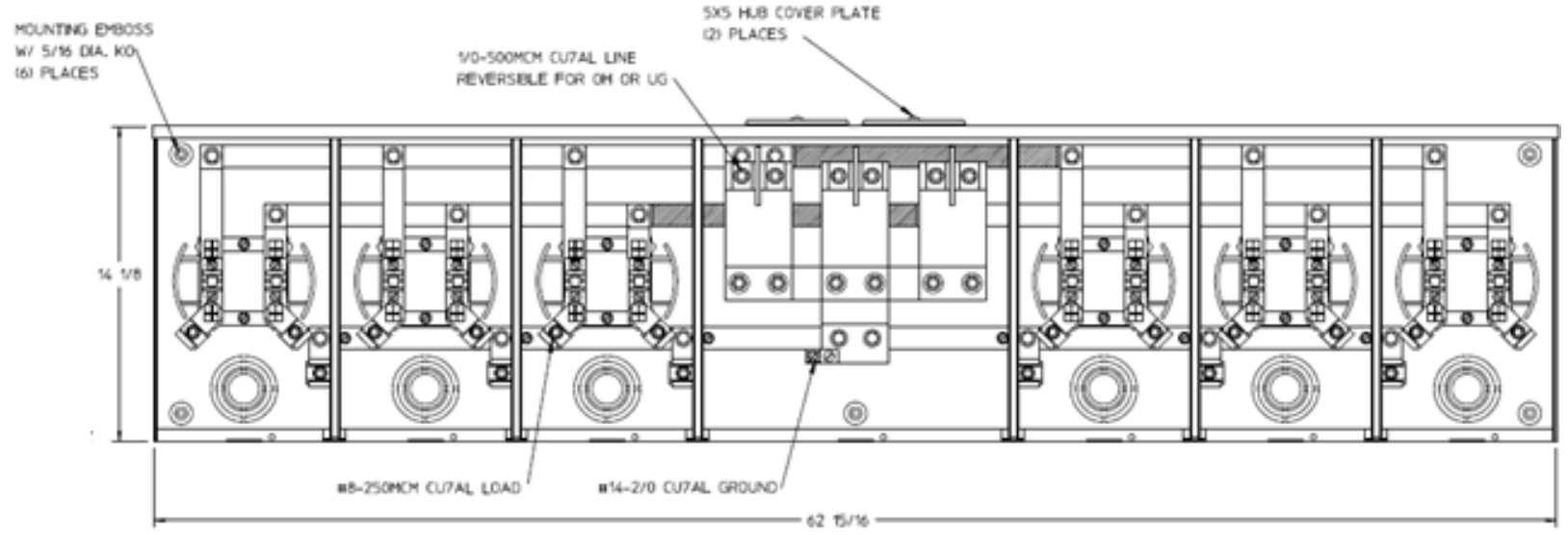


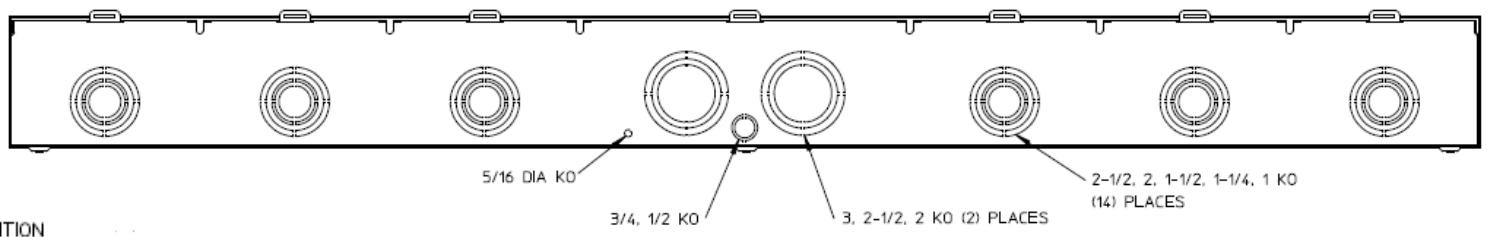
Side View



Front View




Bottom View



Notes

- 1) FINISH: GRAY
- 2) CABINET: 16 GA GALV STEEL
- 3) 200 AMP CONTINUOUS PER POSITION
600 VAC, 1 PHASE, 3-WIRE
620 AMP CONTINUOUS (TOTAL) UNIT RATIN
- 4) TEMPORARY CARDBOARD METER OPENING
COVERS PROVIDED.
- 5) MIDWEST LABEL ATTACHED TO THE END
OF THE CARTON.
- 6) MIDWEST LOGO LOCATED IN LOWER LEFT
HAND CORNER OF THE FRONTS.
- 7) STACK FLAT ON 36 X 62 PALLET.
(DO NOT STACK ON SIDES)



HORIZ GANGED METER SOCKETS-(6) 200A 600V N3R
1P3W (2) HUB CVR PLTS 4-TERM CENTER FED G90

CAT NO	DWG DATE	REV #
MEPKR6CS1ET	02/09/2016	01