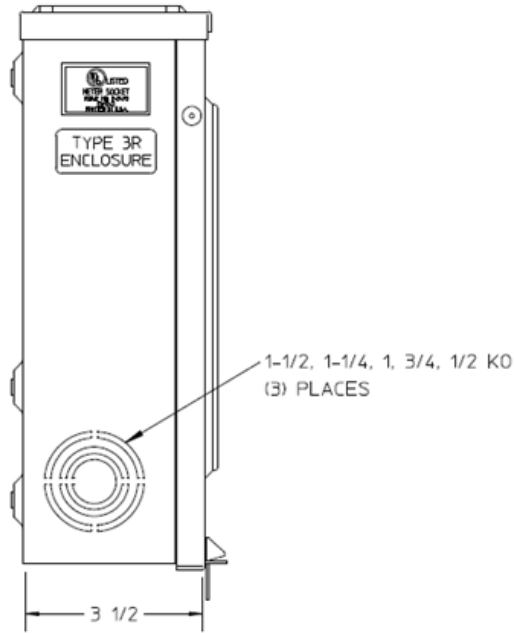
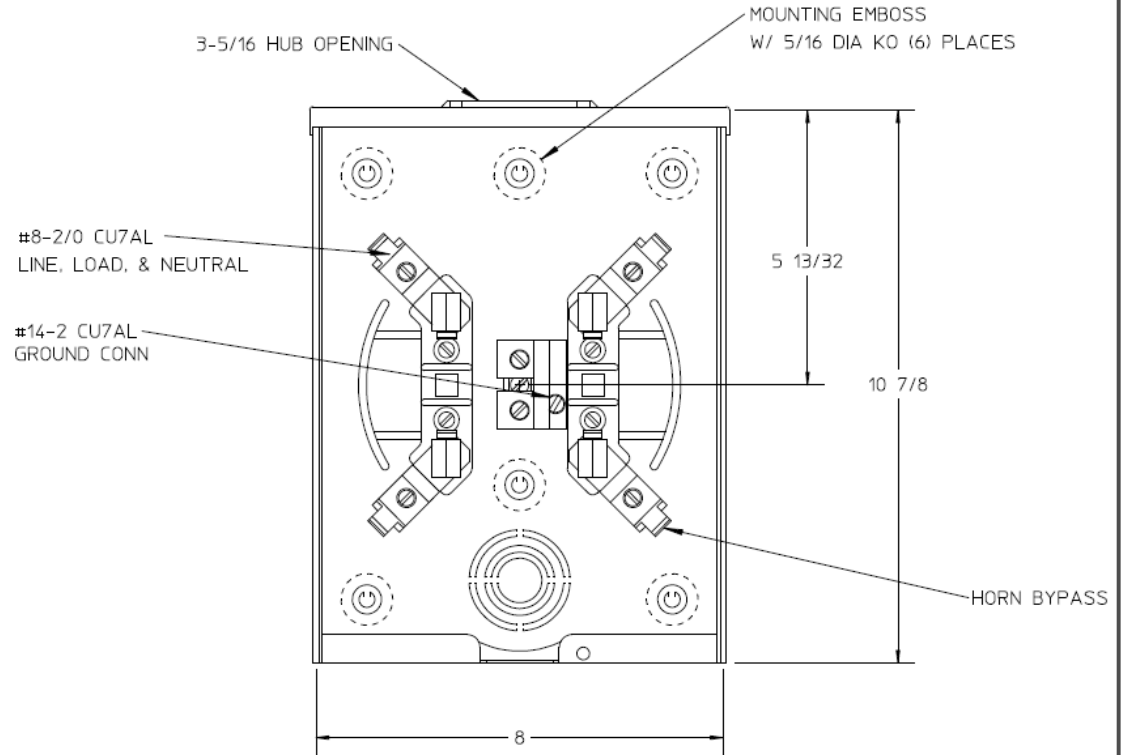


Left Side View



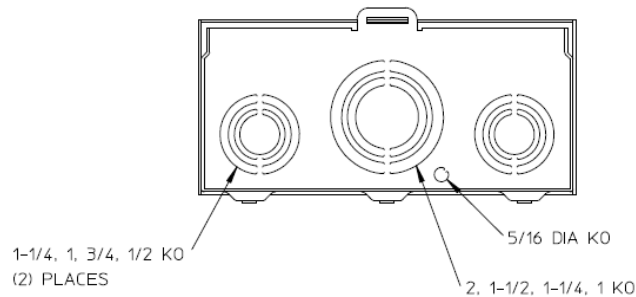
Front View



Notes

- 1) FINISH: GRAY
- 2) CABINET: 16 GA GALV. STEEL
- 3) 125 AMP CONTINUOUS,
600 VAC, 1 PHASE, 3 WIRE
- 4) TEMPORARY CARDBOARD METER OPENING COVER PROVIDED
- 5) MIDWEST LABEL ATTACHED TO THE END OF THE CARTON
- 6) MIDWEST LOGO LOCATED IN THE LOWER LEFT-HAND CORNER OF THE FRONT
- 7) STACK FLAT ON 36 X 48 PALLET. (DO NOT STACK ON SIDES)

Bottom View



METER SKT-(1) 125A 600V 1P3W N3R G90 TRIPLEX GRD
SMALL HUB OPN HORN BYP 4-TRM TOP/BOTTOM FED

CAT NO	DWG DATE	REV #
MEPKS1AS1BT	08/23/2016	01