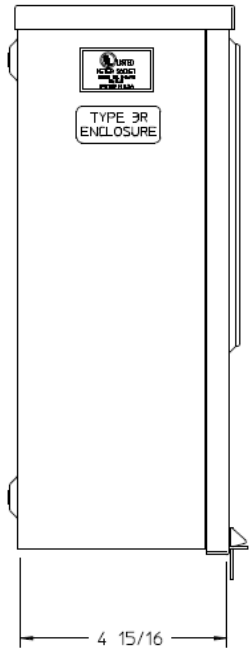
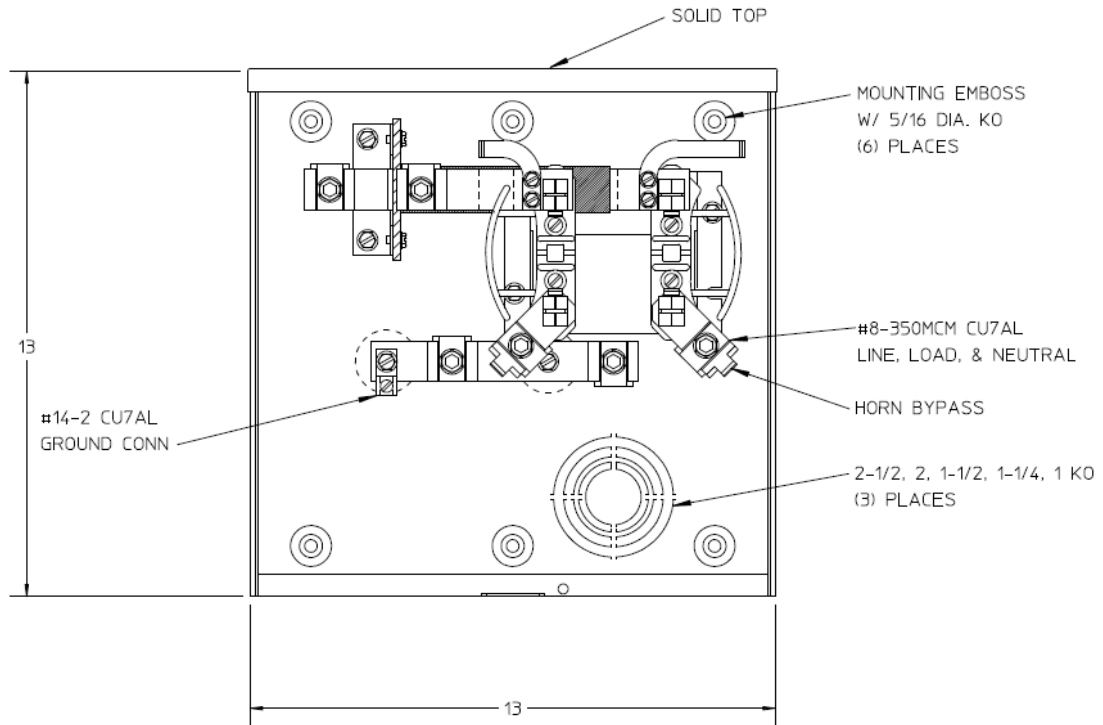


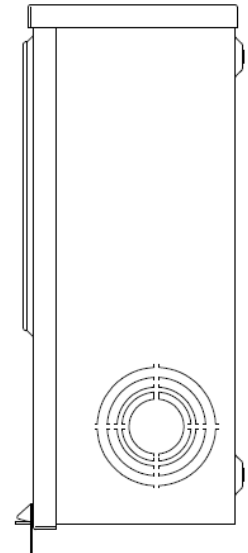
Left Side View



Front View



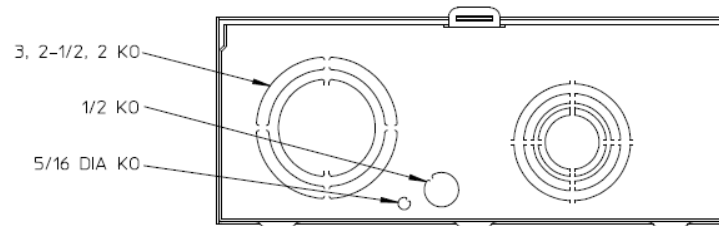
Right Side View



Notes

- 1) FINISH: GRAY
- 2) CABINET: 16 GA. GALV. STEEL
- 3) 200 AMP CONTINUOUS, 600 VAC, 1 PHASE, 3-WIRE
- 4) MIDWEST LABEL ATTACHED TO THE END OF THE CARTON.
- 5) TEMPORARY CARDBOARD METER OPENING COVER PROVIDED
- 6) MIDWEST LOGO LOCATED IN THE LOWER LEFT-HAND CORNER OF THE FRONT
- 7) STACK FLAT ON 36 X 48 PALLET. (DO NOT STACK ON SIDES)

Bottom View



METER SOCKET - (1) 200A 600V 1P3W N3R G90 4-TERM
SOLID TOP HORN BYPASS TOP/BOTTOM FEED

CAT NO	DWG DATE	REV #
MEPKS1DS1AT	08/23/2016	01