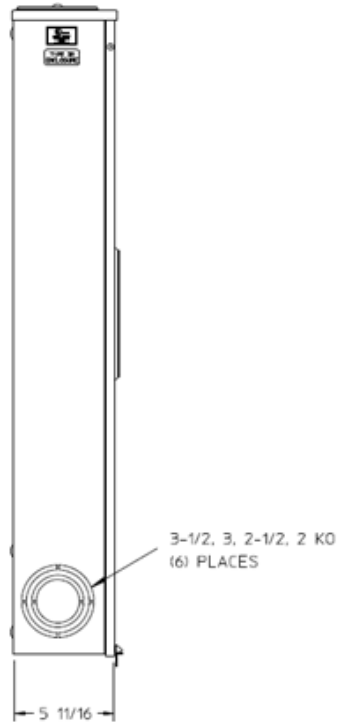
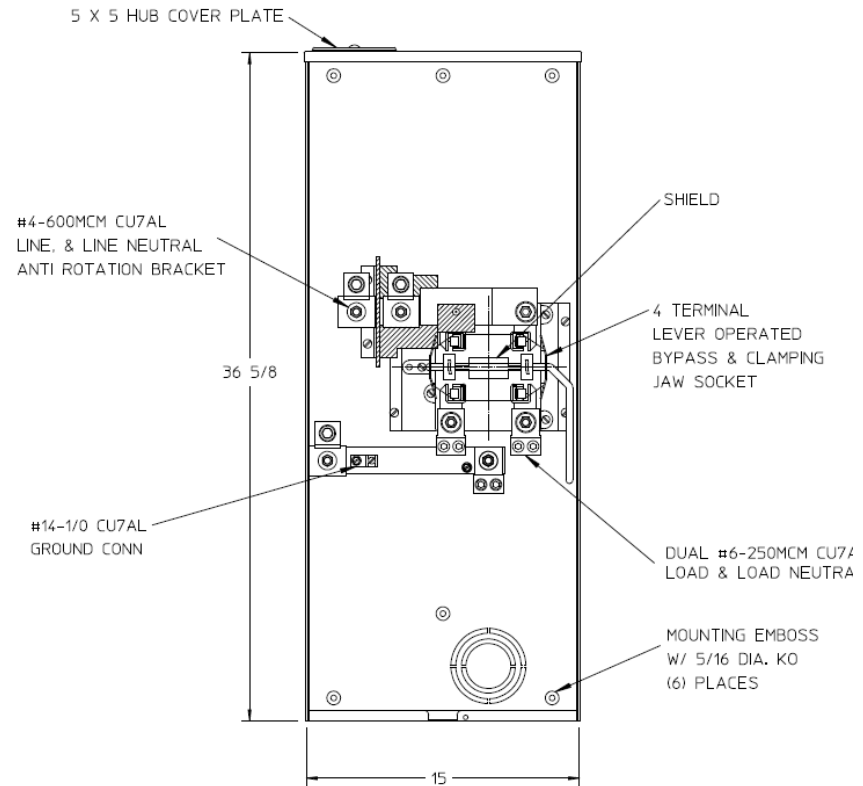


### Left Side View



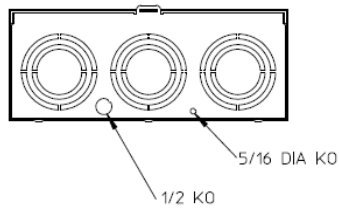
### Front View



### Notes

- 1) FINISH: GRAY
- 2) CABINET: 16 GA GALV. STEEL
- 3) 320 AMP CONTINUOUS  
600 VAC, 1 PHASE, 3 WIRE  
320 AMP BYPASS
- 4) TEMPORARY CARDBOARD METER  
OPENING COVER PROVIDED
- 5) MIDWEST LABEL ATTACHED TO THE  
END OF THE CARTON
- 6) MIDWEST LOGO LOCATED IN THE LOWER  
LEFT-HAND CORNER OF THE FRONT
- 7) STACK (18) UNITS PER PALLET.  
STACK FLAT ON 36 X 48 PALLET.  
(DO NOT STACK ON SIDES)

### Bottom View



METER SOCKET – (1) 320A 600V 1P3W N3R G90 4-TERM  
LARGE HUB CVR PLT LEVER BYPASS TOP/BOTTOM FEED

CAT NO	DWG DATE	REV #
MEPKU1FS1EMT	08/23/2016	01