

Combination AC Disconnects



Single-Phase AC Combination

60 Amp Fusible and Non-Fusible, 120/240V AC

Model Numbers:

U065P010	Non-fused pull-out with 15 Amp GFCI receptacle
U065NA1010	Non-automatic switch with 15 Amp GFCI receptacle
U065F010	Fused pull-out with 15 Amp GFCI receptacle



U065P010

Application Information

Midwest's combination AC disconnects are designed to satisfy NEC requirements for use as an AC unit and outdoor GFCI receptacle. These products meet NEC changes requiring an in-use weatherproof cover for an outdoor GFCI receptacle.

A single unit now replaces the AC disconnect and separate GFCI receptacle under one in-use weatherproof cover. Our compact yet functional design is aesthetically pleasing. Our unit is easy to wire and cost-effective to install. As a result, both the builder and electrical contractor can realize cost savings. Builders eliminate one GFCI receptacle cutout, which impacts framing and outside finishing crews. Electrical contractors save time and money when wiring to a single location.

Features and Benefits

- NEMA 3R weatherproof enclosure for all outdoor applications
- Available in fused, non-fused, and non-automatic switch construction
- G90 galvanized steel construction for superior corrosion protection
- Durable polyester powder coat finish resists chipping and fading
- Compact size (5" X 7" X 4") fits most applications



Three-Phase AC Combination

30 and 60 Amp Fusible and 60 Amp Non-Fusible, 240V AC

Model Numbers:

U0353F010	30 Amp Fused pull-out with 20 Amp GFCI receptacle
U0653F010	60 Amp Fused pull-out with 20 Amp GFCI receptacle
U0653P010	60 Amp Non-fused pull-out with 20 Amp GFCI receptacle



U0653P010

Application Information

Midwest's three-phase AC disconnects can be an acceptable alternative to safety switches for commercial applications. With the inclusion of the GFCI receptacle, the advantages over safety switches can be even greater! These three-phase units provide a cost-effective wiring solution because the GFCI is factory installed.

Without our three-phase AC combination unit, it would require additional materials to be purchased by the contractor (box, GFCI receptacle, weatherproof cover, miscellaneous nipples, connectors and conduit) to wire the separate 20 Amp receptacle. The "all-in-one" design of the three-phase AC disconnects offers material and labor savings to the contractor, which can be substantial for rooftop applications.

Features and Benefits

- NEMA 3R weatherproof enclosure for all outdoor applications
- Available in fused, non-fused, and non-automatic switch construction
- G90 galvanized steel construction for superior corrosion protection
- Durable polyester powder coat finish resists chipping and fading
- Compact size (6-1/2" X 14" X 5-1/4") fits most applications



Technical Information

All models, when installed correctly, comply with the requirements set forth in the National Electrical Code; refer to the following NEC paragraphs.

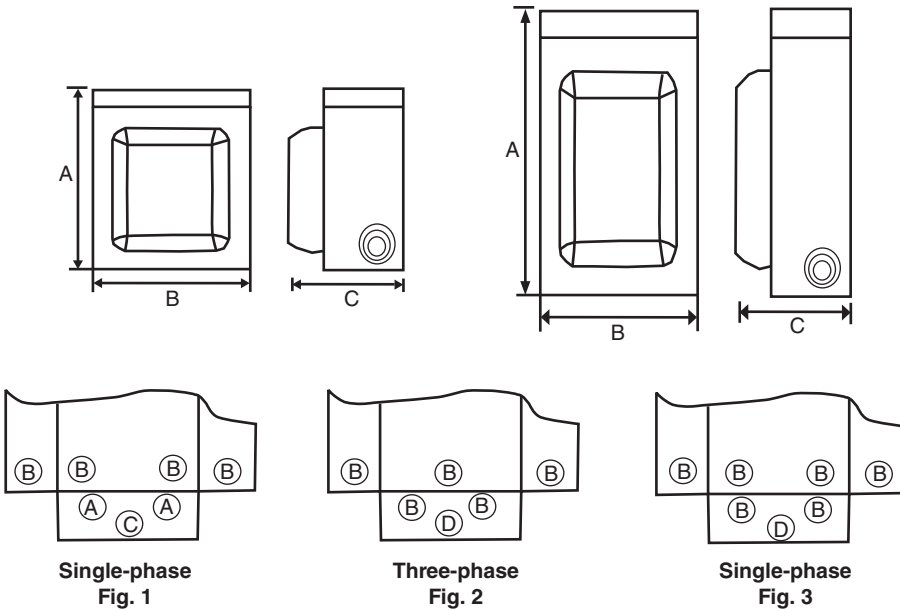
Article 210.52 (E) Dwelling Unit Receptacle Outlets; Outdoor Outlets

Article 210.63 Heating, Air-Conditioning, and Refrigeration Equipment Outlet

Article 406.9 (B) Receptacles in Wet Locations

Article 440.14 Air-Conditioning and Refrigeration Equipment; Disconnecting Means; Location

Dimensions and Knockouts



	A	B	C	KO Detail
Single-phase				
U065P010	7 ¹ / ₈ "	5 ³ / ₄ "	5 ³ / ₁₆ "	Fig. 1
U065NA1010	7 ¹ / ₈ "	5 ³ / ₄ "	5 ³ / ₁₆ "	Fig. 1
U065F010	9"	6 ¹ / ₈ "	5 ³ / ₁₆ "	Fig. 3
Three-phase				
U0353F010	14"	6 ¹ / ₂ "	5 ¹ / ₄ "	Fig. 2
U0653F010	14"	6 ¹ / ₂ "	5 ¹ / ₄ "	Fig. 2
U0653P010	14"	6 ¹ / ₂ "	5 ¹ / ₄ "	Fig. 2

Symbol	Knockouts
A	1/2", 3/4"
B	1/2", 3/4", 1"
C	1/2", 3/4", 1", 1 1/4"
D	1/2", 3/4", 1 1/4", 1 1/2"

Information provided is subject to change without notice. Please verify all details with Midwest. All values are design or typical values when measured under laboratory condition, and Midwest makes no warranty or guarantee, express or implied, that such performance will be obtained under end-use conditions.

Midwest Electric Products
 305 Gregson Drive
 Cary, NC 27511
 Customer Service: 866-685-0577
 Fax: 804-965-1041
www.midwestelectric.com

© 2019 Midwest Electric Products

MET-005B (12/19)

