

Midwest Electric Products

Single Socket and Horizontal Metering

DTE Approved



Single Socket Metering—DTE Approved



Application Information

Midwest's Single Socket Metering products are designed for residential use. They are UL labeled and are manufactured with surface mounted outdoor enclosures. The units in this brochure are approved by DTE.

Our products range from 20A through 320A and are available in single phase.

Specifications and Features

- Single phase
- UL Listed
- Tested and UL listed up to 10kAIC short circuit rating
- Selected items are utility approved
- NEMA 3R enclosure
- Integral duplex ground extruded in neutral lug
- G90 galvanized bridge provides superior corrosion resistance
- Heavy duty lug screws provide stronger connection component for reliable termination
- 125A units have horn bypass kit that is field installable by changing slide-nut
- 200A units have jaws made of copper plated alloy and have reinforcing springs to help maintain electrical connections
- 200A units have slide-nuts that allow for ease of installation of conductors and help eliminate lost components



Single Socket Metering—DTE Approved

Single Phase, 600V, Ringless

Amp	Model Number	Wire Range (CU/AL)	Overhead/Underground Line Feed	Ground Range (CU/UL)	Triplex Ground	No. of Terminals	Lever Bypass	Horned Bypass	Hub Type	Enclosure N3R	UL & Utility Approved
20	1007003CMEP	#12	Bottom	(2) #14-2	N	13	N	N	Solid Top	G90 Steel	UL, DTE
	1007361CMEP	#12	Bottom	(2) #14-2	N	8	N	N	Solid Top		
125	1006385BMEP	#8-2/0	Bottom	No Ground	N	4	N	N	Solid Top		
200	1004709DMEP	#8-250MCM	Top/ Bottom	No Ground	N	4	N	N	Small Hub Opening		
	1004710EMEP	#8-250MCM	Top/ Bottom	No Ground	N	4	N	N	Small Hub Cover Plate		
320	1009788AMEP [†]	Studs - (1) 600MCM or (2) 350MCM	Top/ Bottom	No Ground	N	4	Y	N	Large Hub Cover Plate		

[†]Lugs not included. This product comes with studs only. Order lugs separately, see accessories on page 6. One (1) lug per kit, order appropriate quantity needed. For example, order three lugs (A, C, N) if meter is 1-phase or four lugs (A, B, C, N) if meter is 3-phase.

Technical Data

Model Number	Height (A) Inches	Width (B) Inches	Depth (C) Inches	Gross Weight lbs.	Enclosure Style	Knockout Figure	Standard Pack
1004709DMEP	14.00	8.00	4.38	13.05	A	P	1
1004710EMEP	14.00	11.00	4.38	13.05	A	Q	1
1006385BMEP	10.88	8.00	3.50	7.00	A	R	1
1007003CMEP	16.50	14.00	3.50	13.05	B	D	1
1007361CMEP	16.50	14.00	3.50	22.00	B	D	1
1009788AMEP	34.50	13.00	4.94	30.42	A	U	1

Enclosure Styles

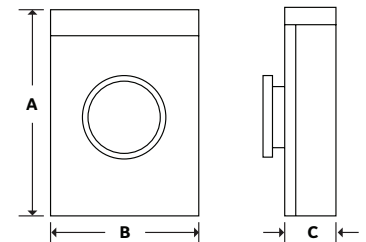


Figure A

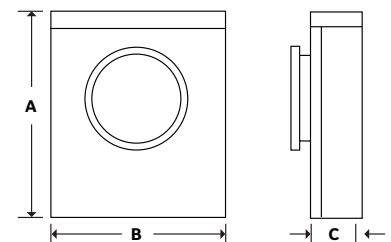


Figure B

Knockout Figures

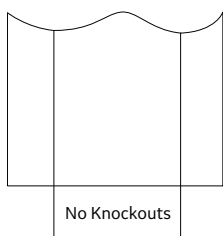


Figure D

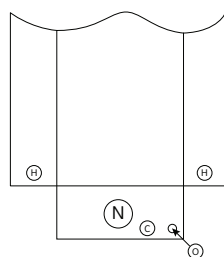


Figure P

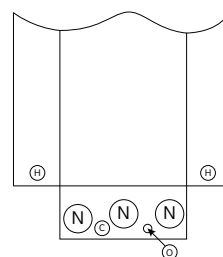


Figure Q

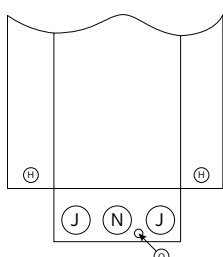


Figure R

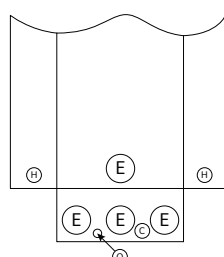


Figure U

Knockout Dimensions (inches)

C = 1/2
E = 2, 2-1/2, 3
H = 3/4
J = 1/2, 3/4, 1, 1-1/4
N = 1, 1-1/4, 1-1/2, 2
O = 1/2, 3/4, 1, 1-1/4, 1-1/2

Horizontal Metering—DTE Approved



Application Information

Midwest's Horizontal Metering products offer 600V metering solutions for strip malls and small commercial buildings requiring two metering locations. These products accept meters with 200A ratings and they have a compact vertical footprint. The products in this brochure meet all of the DTE utility specification requirements.

Specifications and Features

- Single phase
- Top/Bottom Feed
- UL Listed
- Selected items are utility approved
- NEMA 3R enclosure
- Multiple hub opening and closure plate sizes available
- Hub opening in top endwall, requires use of a bolt-on hub or closing plate
- 1Ø, 600 Vac maximum
- Main lugs only
- End or center feed



- Overhead and underground service feeds
- 10 kAIC short circuit rating (or higher with utility approval)

Horizontal Metering—DTE Approved

Single Phase, 600V, Ringless

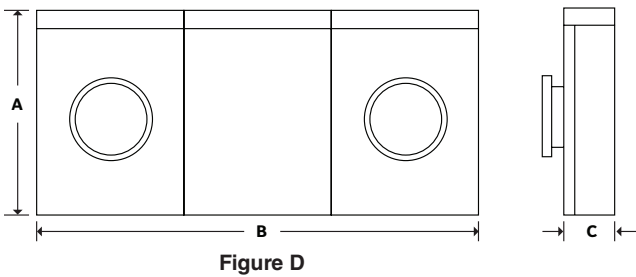
Amp	Gang	Model Number	Feed Type	Overhead/Underground Line Feed	Line Wire Range	Ground Lug Size	Triplex Ground	No. of Terminals	Lever Bypass	Horned Bypass	Hub Type	Enclosure N3R	UL & Utility Approved
200	2	1006737BMEP	Center	Top/Bottom	3/8" Studs Line† #8-250MCM Load	No Ground	N	4	N	N	Large Hub Cover Plate	G90 Steel	UL, DTE

†Lugs not included. This product comes with studs only. Order lugs separately, see accessories on page 6. One (1) lug per kit, order appropriate quantity needed. For example, order three lugs (A, C, N) if meter is 1-phase or four lugs (A, B, C, N) if meter is 3-phase.

Technical Data

Model Number	Height (A) Inches	Width (B) Inches	Depth (C) Inches	Gross Weight lbs.	Enclosure Style	Knockout Figure	Standard Pack
1006737BMEP	14.13	24.31	5.38	28.50	D	K	1

Enclosure Style



Knockout Figure

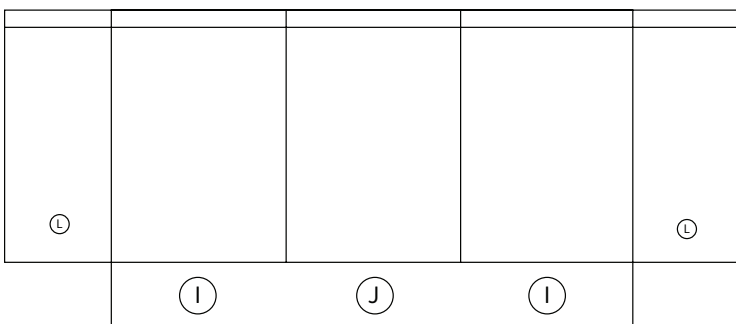


Figure K

Knockout Dimensions (inches)

I = 1-1/4, 1-1/2, 2

J = 1/2, 3/4, 1, 1-1/4

L = 2, 2-1/2, 3, 3-1/2

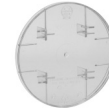
Single Socket and Horizontal Metering

Accessories

Model Number	Description
ARP00118MEP	One Lug for (2) #6 - 250MCM Cables/Phase
ARP00429MEP	One Lug for (1) #4-600M Cables/Phase or (2) 1/0-250 Cables/Phase
ARP00129MEP	Connector Kit #4-600MCM
ARP00326MEP	5th Terminal Kit Lever Bypass
ARP00035MEP	5th Terminal Kit Non-Lever Bypass
ARP01595MEP	HQ Bolt-on Shield for 1009788AMEP (flash shield over jaws)
ARP00984MEP	Anti-Inversion Clip (10 per package)
ARP01590MEP	DTE Auxiliary Service Kit
1006630AMEP	Auxiliary Contacts Enclosure G90
ARP00920MEP	Plastic Meter Socket Cover Plate



ARP00035MEP



ARP00920MEP

Hub Kits

Model Number	Description
ARP00003MEP	1" Hub Kit, Small
ARP00004MEP	1.25" Hub Kit, Small
ARP00005MEP	1.5" Hub Kit, Small
ARP00006MEP	2" Hub Kit, Small
ARP00007MEP	2.5" Hub Kit, Small
ARP00017MEP	2" Hub Kit, Large
ARP00018MEP	2.5" Hub Kit, Large
ARP00019MEP	3" Hub Kit, Large
ARP00020MEP	3.5" Hub Kit, Large
ARP00021MEP	4" Hub Kit, Large



Small Hub



Large Hub

Midwest Electric Products
 305 Gregson Drive
 Cary, NC 27511
 Customer Service: 866-685-0577
 Fax: 804-965-1041
www.midwestelectric.com
 © 2019 Midwest Electric
 MET-037E (12/19)

Information provided is subject to change without notice. Please verify all details with Midwest. All values are design or typical values when measured under laboratory condition, and Midwest makes no warranty or guarantee, express or implied, that such performance will be obtained under end-use conditions.

