

Midwest Electric Products

Single Socket and Horizontal Metering

AEP Approved



Single Socket Metering—AEP Approved



Application Information

Midwest's Single Socket Metering products are designed for residential use. They are UL labeled and are manufactured with surface mounted outdoor enclosures. The units in this brochure are approved by AEP.

Our products range from 125A to 320A and are available in single phase or three phase.

Specifications and Features

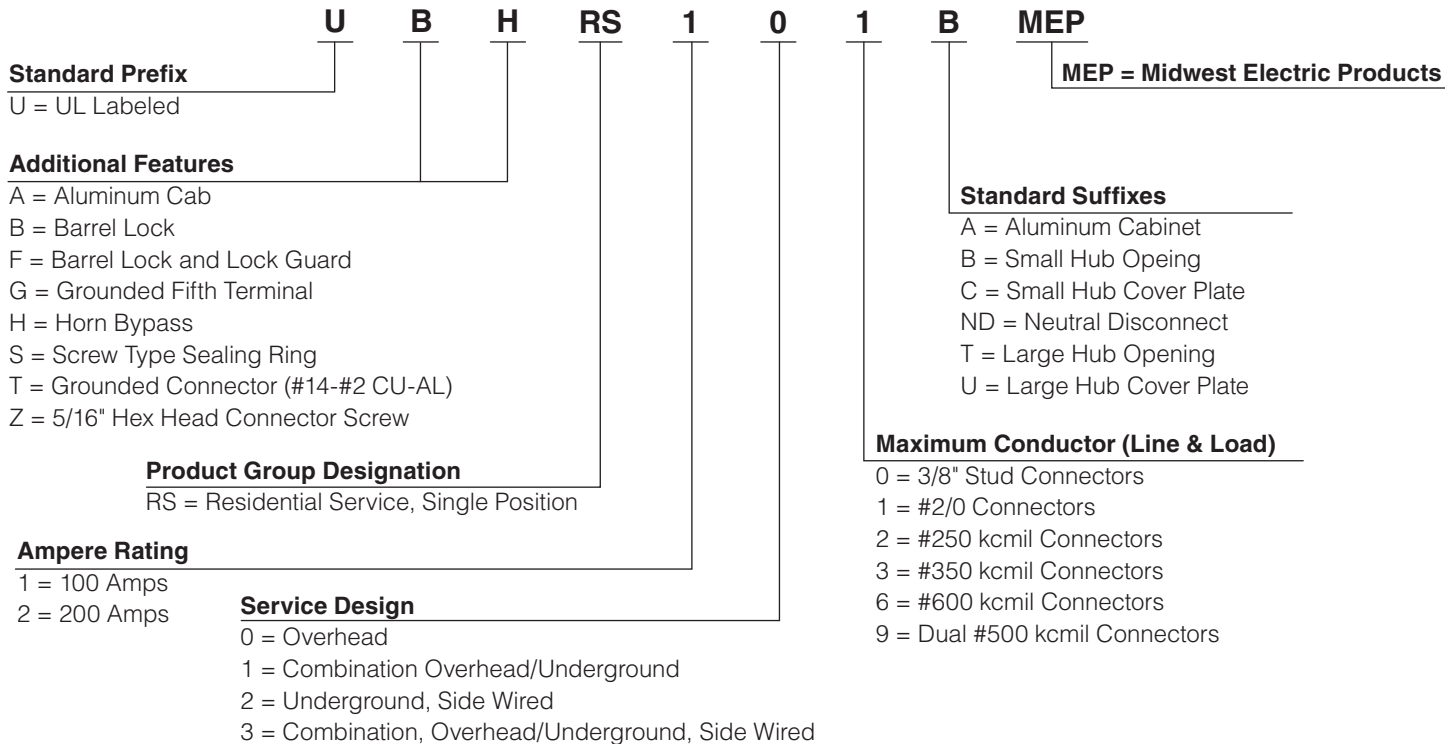
- Single Phase or Three Phase
- UL Listed
- Tested and UL listed up to 10kAIC short circuit rating
- Selected items are utility approved
- NEMA 3R enclosure
- Integral duplex ground extruded in neutral lug
- G90 galvanized bridge provides superior corrosion resistance
- Heavy duty lug screws provide stronger connection component for reliable termination
- 125A units have horn bypass kit that is field installable by changing slide-nut
- 200A units have jaws made of copper plated alloy and have reinforcing springs to help maintain electrical connections
- 200A units have slide-nuts that allow for ease of installation of conductors and help eliminate lost components



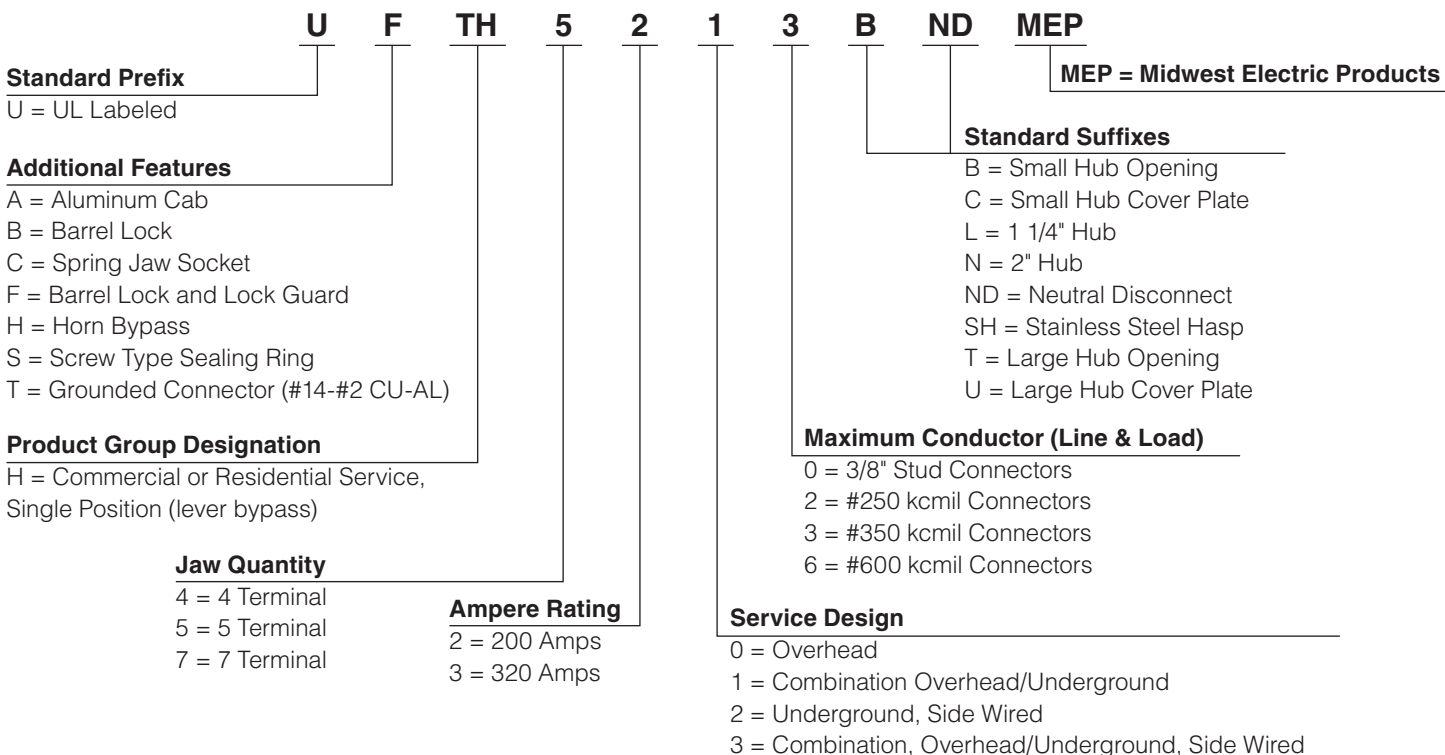
Single Socket Metering—AEP Approved

Single Socket Nomenclature

Sockets with 4 Jaws/Terminals



Sockets with 4, 5 or 7 Jaws/Terminals



Products beginning with "10" or "MEP" will not follow the nomenclature.

Single Socket Metering—AEP Approved

Single Phase, 600V, Ringless

Amp	Model Number	Wire Range (CU/AL)	Overhead/Underground Line Feed	Ground Range (CU/AL)	Triplex Ground	No. of Terminals	Lever Bypass	Horned Bypass	Hub Type	Enclosure N3R	UL & Utility Approved
125	MEPKS1AS1BTV	#8-2/0	Top	(1) #14-2	Y	4	N	Y	Small Hub Opening	G90 Steel	UL,AEP
	UFHTRS101BMEP	#8-2/0	Top/Bottom	(1) #14-2	Y	4	N	Y	Small Hub Opening		
200	1007665AMEP	#8-250MCM	Top/Bottom	(1) #14-2	Y	4	N	Y	Small Hub Opening	Aluminum	
	1011692MEP	#6-350MCM	Top/Bottom	(1) #14-2	Y	4	Y	N	Small Hub Cover Plate		
	MEPKS1CS1BJTV	#8-250MCM	Top	(1) #14-2	Y	4	N	Y	Small Hub Opening	G90 Steel	
	MEPKS1CS1DTV	#8-350MCM	Top/Bottom	(1) #14-2	Y	4	N	Y	Small Hub Cover Plate		
	MEPKS1DS1ATV	#8-350MCM	Side	(1) #14-2	Y	4	N	Y	Solid Top		
	UFHTRS202BMEP	#8-250MCM	Top/Bottom	(1) #14-2	Y	4	N	Y	Small Hub Opening		
	UFHTRS223AMEP	#8-350MCM	Bottom	(1) #14-2	Y	4	N	Y	Solid Top		
	UFHTRS233CMEP	#8-350MCM	Top/Bottom	(1) #14-2	Y	4	N	Y	Small Hub Cover Plate		
	UFTH4213CMEP	#6-350MCM	Top/Bottom	(1) #14-2	Y	4	Y	N	Small Hub Cover Plate		
	1008068MEP	(2) #6-350MCM	Top/Bottom	(1) #14-1/0	Y	4	Y	N	Large Hub Cover Plate		
UAFTH4330TSHMEP ¹	Studs - (1) 600MCM or (2) 350MCM	Top/Bottom	(1) #14-1/0	Y	4	Y	N	Large Hub Opening			
320	UAFTH4336TSHMEP	#4-600MCM	Top/Bottom	(1) #14-1/0	Y	4	Y	N	Large Hub Opening	G90 Steel	
	UFTH4330TMEP ¹	Studs - (1) 600MCM or (2) 350MCM	Top/Bottom	(1) #14-1/0	Y	4	Y	N	Large Hub Opening		
	UFTH4336TMEP	#4-600MCM	Top/Bottom	(1) #14-1/0	Y	4	Y	N	Large Hub Opening		

Three Phase, 600V, Ringless

Amp	Model Number	Wire Range (CU/AL)	Overhead/Underground Line Feed	Ground Range (CU/AL)	Triplex Ground	No. of Terminals	Lever Bypass	Horned Bypass	Hub Type	Enclosure N3R	UL & Utility Approved
200	UAFTH7213TSHMEP	#6-350MCM	Top/Bottom	(1) #14-2	Y	7	Y	N	Large Hub Opening	Aluminum	UL,AEP
	UFTH7213BMEP	#6-350MCM	Top/Bottom	(1) #14-2	Y	7	Y	N	Small Hub Opening		
	UFTH7213TMEP	#6-350MCM	Top/Bottom	(1) #14-2	Y	7	Y	N	Large Hub Opening	G90 Steel	
	UFTTH7213TMEP	#6-350MCM	Top/Bottom	(2) #14-2	Y	7	Y	N	Large Hub Opening		
320	UAFTH7330TSHMEP ¹	Studs - (1) 600MCM or (2) 350MCM	Top/Bottom	(1) #14-1/0	Y	7	Y	N	Large Hub Opening	Aluminum	
	UAFTH7336TSHMEP	#4-600MCM	Top/Bottom	(1) #14-1/0	Y	7	Y	N	Large Hub Opening		
	UFTH7330TMEP ¹	Studs - (1) 600MCM or (2) 350MCM	Top/Bottom	(1) #14-1/0	Y	7	Y	N	Large Hub Opening	G90 Steel	
	UFTH7336TMEP	#4-600MCM	Top/Bottom	(1) #14-1/0	Y	7	Y	N	Large Hub Opening		
	UFTTH7330TMEP ¹	Studs - (1) 600MCM or (2) 350MCM	Top/Bottom	(2) #14-1/0	Y	7	Y	N	Large Hub Opening		
	UFTTH7336TMEP	#4-600MCM	Top/Bottom	(2) #14-1/0	Y	7	Y	N	Large Hub Opening		

¹Lugs not included. This product comes with studs only. Order lugs separately, see accessories on page 10. One (1) lug per kit, order appropriate quantity needed. For example, order three lugs (A, C, N) if meter is single-phase or four lugs (A, B, C, N) if meter is three-phase.

Single Socket Metering—AEP Approved (continued)

Single or Three Phase, 600V

Amp	Model Number	Wire Range (CU/AL)	Overhead/Underground Line Feed	Ground Range (CU/AL)	Triplex Ground	No. of Terminals	Lever Bypass	Horned Bypass	Hub Type	Enclosure N3R	UL & Utility Approved
200	UAFTH5213BNDMEP	#6-350MCM	Top/Bottom	(1) #14-2	Y	5	Y	N	Small Hub Opening	Aluminum	UL,AEP
	UFTH5213BNDMEP	#6-350MCM	Top/Bottom	(1) #14-2	Y	5	Y	N	Small Hub Opening	G90 Steel	

Dimensions and Enclosure Style

Model Number	Height (A) Inches	Width (B) Inches	Depth (C) Inches	Gross Weight lbs.	Enclosure Style
1007665AMEP	14.00	8.00	4.38	12.00	A
1008068MEP	34.50	16.44	6.50	39.00	C
1011692MEP	19.00	13.00	4.94	25.00	A
MEPKS1AS1BTV	10.88	8.00	3.50	7.00	A
MEPKS1CS1BJTV	14.00	8.00	4.38	11.00	A
MEPKS1CS1DTV	15.00	11.00	4.38	14.00	A
MEPKS1DS1ATV	13.00	13.00	4.94	15.00	D
UAFTH4330TSHMEP	36.63	15.00	5.69	22.00	C
UAFTH4336TSHMEP	36.63	15.00	5.69	28.00	C
UAFTH5213BNDMEP	19.00	13.00	4.94	19.00	A
UAFTH7213TSHMEP	19.00	13.00	4.94	19.00	A
UAFTH7330TSHMEP	39.88	20.00	6.50	37.00	C
UAFTH7336TSHMEP	39.88	20.00	6.50	39.00	C
UFHTRS101BMEP	10.88	8.00	3.50	8.00	A
UFHTRS202BMEP	14.00	8.00	4.38	12.00	A
UFHTRS223AMEP	13.00	13.00	4.94	16.00	A
UFHTRS233CMEP	17.13	13.00	4.94	18.00	C
UFTH4213CMEP	19.00	13.00	4.94	25.00	A
UFTH4330TMEP	36.63	15.00	5.69	41.00	C
UFTH4336TMEP	36.63	15.00	5.69	42.00	C
UFTH5213BNDMEP	19.00	13.00	4.94	26.00	A
UFTH7213BMEP	19.00	13.00	4.94	26.00	A
UFTH7213TMEP	19.00	13.00	4.94	26.00	A
UFTH7330TMEP	39.88	20.00	6.50	65.00	C
UFTH7336TMEP	39.88	20.00	6.50	42.00	C
UFTTH7213TMEP	19.00	13.00	4.94	26.00	A
UFTTH7330TMEP	39.88	20.00	6.50	65.00	C
UFTTH7336TMEP	39.88	20.00	6.50	67.00	C

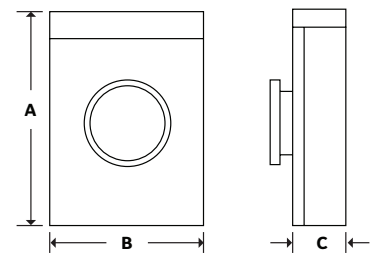


Figure A

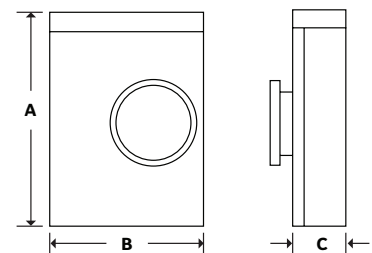


Figure C

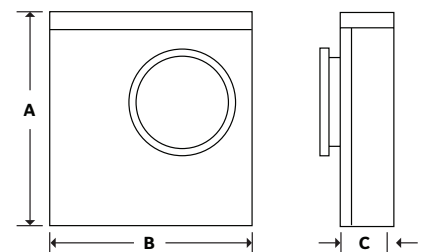


Figure D

Single Socket Metering—AEP Approved

Knockout Drawings and Dimensions

Model Number	Knockout Figure
1007665AMEP	S
1008068MEP	G
1011692MEP	N
MEPKS1AS1BTV	I
MEPKS1CS1BJTV	J
MEPKS1CS1DTV	H
MEPKS1DS1ATV	K
UAFTH4330TSHMEP	F
UAFTH4336TSHMEP	F
UAFTH5213BNDMEP	N
UAFTH7213TSHMEP	N
UAFTH7330TSHMEP	V
UAFTH7336TSHMEP	V
UFHTRS101BMEP	W
UFHTRS202BMEP	J
UFHTRS223AMEP	K
UFHTRS233CMEP	K
UFTH4213CMEP	N
UFTH4330TMEP	F
UFTH4336TMEP	F
UFTH5213BNDMEP	N
UFTH7213BMEP	N
UFTH7213TMEP	N
UFTH7330TMEP	V
UFTH7336TMEP	V
UFTTH7213TMEP	N
UFTTH7330TMEP	V
UFTTH7336TMEP	V

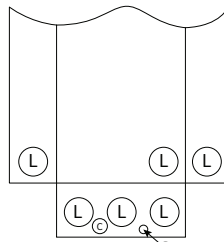


Figure F

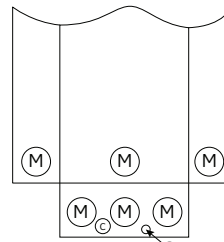


Figure G

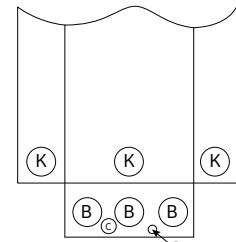


Figure H

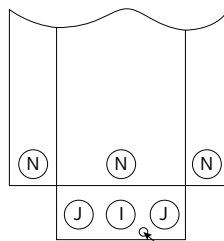


Figure I

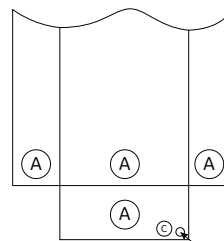


Figure J

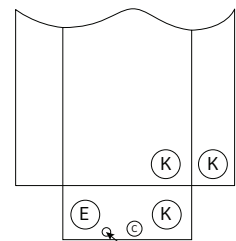


Figure K

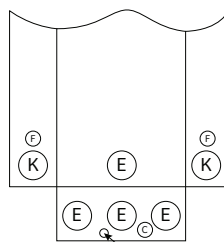


Figure N

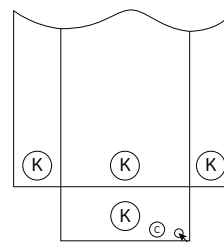


Figure S

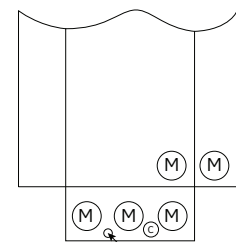


Figure V

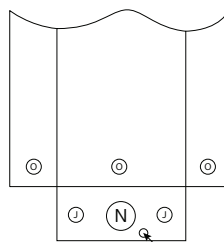


Figure W

Knockout Dimensions (inches)	
A = 1-1/2, 2, 2-1/2	J = 1/2, 3/4, 1, 1-1/4
B = 1-1/4, 1-1/2, 2, 2-1/2	K = 1, 1-1/4, 1-1/2, 2, 2-1/2
C = 1/2	L = 2, 2-1/2, 3, 3-1/2
D = 5/16	M = 2, 2-1/2, 3, 3-1/2, 4
E = 2, 2-1/2, 3	N = 1, 1-1/4, 1-1/2, 2
F = 1/2, 3/4	O = 1/2, 3/4, 1, 1-1/4, 1-1/2
I = 1-1/4, 1-1/2, 2	

Horizontal Metering—AEP Approved



Application Information

Midwest's Horizontal Metering products offer 600V metering solutions for strip malls and small commercial buildings requiring two to six metering locations. These products accept meters with 200A ratings and they have a compact vertical footprint. The products in this brochure meet all of the AEP utility specification requirements.

Specifications and Features

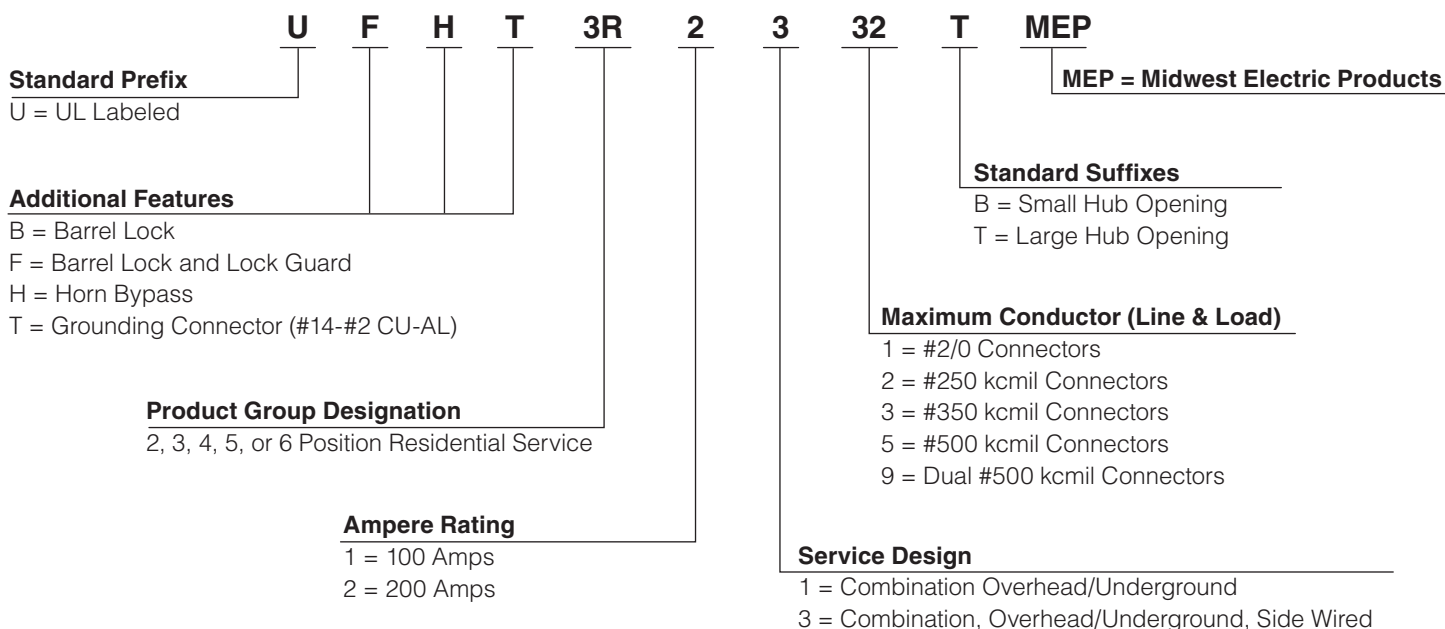
- Single Phase
- Top/Bottom Feed
- UL Listed
- Selected items are utility approved
- NEMA 3R enclosure
- Multiple hub opening and closure plate sizes available
- Hub opening in top endwall, requires use of a bolt-on hub or closing plate
- 1Ø, 600 Vac maximum
- Main lugs only



- End or center feed
- Overhead and underground service feeds
- 10 kAIC short circuit rating (or higher with utility approval)

Horizontal Metering—AEP Approved

Horizontal Nomenclature



Single Phase, 600V, Ringless

Amp	Gang	Model Number	Feed Type	Overhead/ Underground Line Feed	Line Wire Range	Ground Lug Size	Triplex Ground	No. of Terminals	Lever Bypass	Horned Bypass	Hub Type	Enclosure N3R	UL & Utility Approved
100	2	UBH2R1121BMEP	Center	Top/Bottom	#6-250MCM Line #8-2/0 Load	No Ground	N	4	N	Y	Small Hub Opening	G90 Steel	UL, AEP
	3	UBH3R1121BMEP	Center	Top/Bottom	#6-250MCM Line #8-2/0 Load	No Ground	N	4	N	Y	Small Hub Opening		
200	2	UBH2R2332TMEP	Center	Top/Bottom	#6-350MCM Line #8-250MCM Load	No Ground	N	4	N	Y	Large Hub Opening		
	3	UBH3R2332TMEP	Center	Top/Bottom	#6-350MCM Line #8-250MCM Load	No Ground	N	4	N	Y	Large Hub Opening		
	2	UFHT2R2332TMEP	Center	Top/Bottom	#8-350MCM Line #8-250MCM Load	(1) #14-2	Y	4	N	Y	Large Hub Opening		
	3	UFHT3R2332TMEP	Center	Top/Bottom	#6-350MCM Line #8-250MCM Load	(1) #14-2	Y	4	N	Y	Large Hub Opening		
	4	UFHT4R2352TMEP	Center	Top/Bottom	1/0-500MCM Line #8-250MCM Load	(1) #14-1/0	Y	4	N	Y	Large Hub Opening		
	5	UFHT5R2392TTMEP	Center	Top/Bottom	1/0-500MCM Line #8-250MCM Load	(1) #14-2/0	Y	4	N	Y	(2) Large Hub Openings		
6	UFHT6R2392TTMEP	Center	Top/Bottom	1/0-500MCM Line #8-250MCM Load	(1) #14-2/0	Y	4	N	Y	(2) Large Hub Openings			

Horizontal Metering—AEP Approved

Dimensions and Enclosure Style

Model Number	Height (A) Inches	Width (B) Inches	Depth (C) Inches	Gross Weight lbs.	Enclosure Style	Standard Pack
UBH2R1121BMEP	14.13	24.31	4.50	27.00	D	1
UBH3R1121BMEP	14.13	32.47	4.50	34.00	I	1
UBH2R2332TMEP	14.13	24.31	5.38	28.00	D	1
UBH3R2332TMEP	14.13	32.47	5.38	38.00	I	1
UFHT2R2332TMEP	14.13	24.31	5.38	30.00	B	1
UFHT3R2332TMEP	14.13	32.47	5.38	41.00	E	1
UFHT4R2352TMEP	14.13	40.63	5.38	52.00	H	1
UFHT5R2392TTMEP	14.13	54.78	5.38	67.00	A	1
UFHT6R2392TTMEP	14.13	82.94	5.38	78.00	B	1

Enclosures

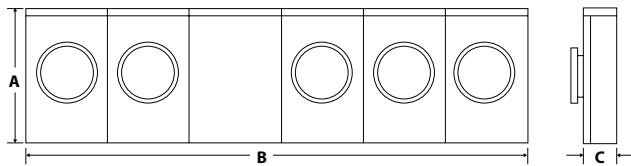


Figure A

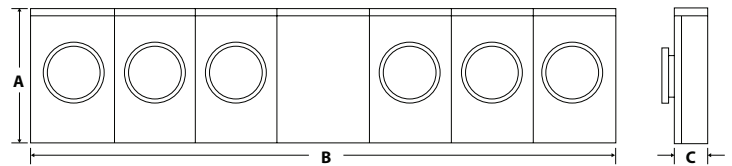


Figure B

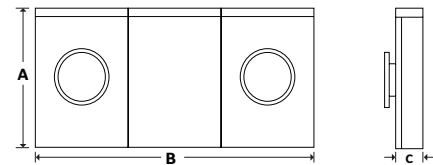


Figure D

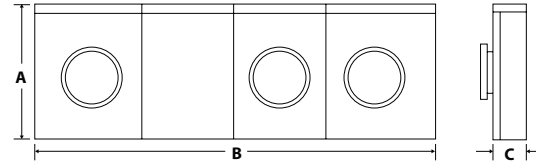


Figure E

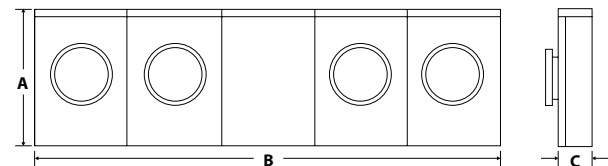


Figure H

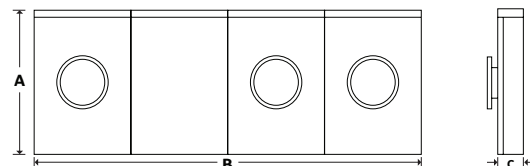


Figure I

Horizontal Metering—AEP Approved

Knockout Drawings and Dimensions

Model Number	Knockout Figure	Standard Pack
UBH2R1121BMEP	E	1
UBH3R1121BMEP	F	1
UBH2R2332TMEP	D	1
UBH3R2332TMEP	G	1
UFHT2R2332TMEP	D	1
UFHT3R2332TMEP	G	1
UFHT4R2352TMEP	L	1
UFHT5R2392TTMEP	A	1
UFHT6R2392TTMEP	B	1

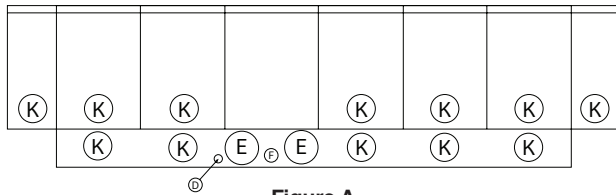


Figure A

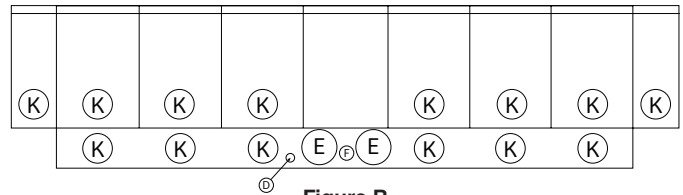


Figure B

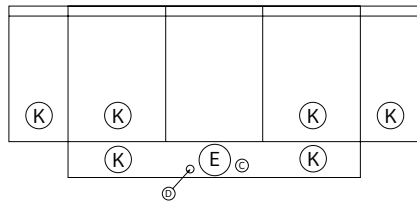


Figure D

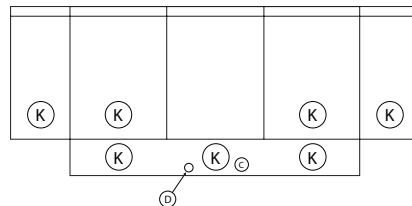


Figure E

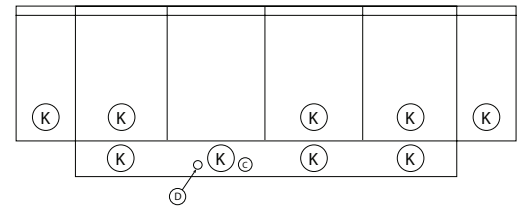


Figure F

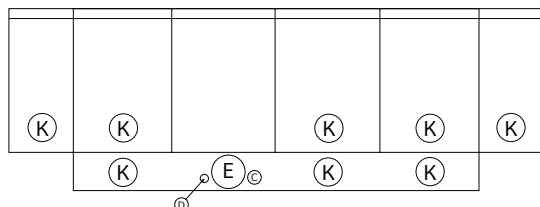


Figure G

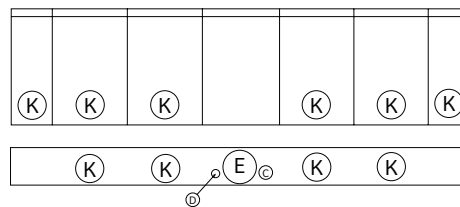


Figure L

Knockout Dimensions (inches)

C = 1/2

D = 5/16

E = 2, 2-1/2, 3

F = 1/2, 3/4

K = 1, 1-1/4, 1-1/2, 2, 2-1/2

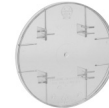
Single Socket and Horizontal Metering

Accessories

Model Number	Description
ARP00118MEP	One Lug for (2) #6-250MCM Cables/Phase
ARP00429MEP	One Lug for (1) #4-600M Cables/Phase or (2) 1/0-250 Cables/Phase
ARP00129MEP	Connector Kit #4-600MCM
ARP00326MEP	5th Terminal Kit Lever Bypass
ARP00035MEP	5th Terminal Kit Non-Lever Bypass
ARP00984MEP	Anti-Inversion Clip (10 per package)
1006630AMEP	Auxiliary Contacts Enclosure G90
ARP00920MEP	Plastic Meter Socket Cover Plate



ARP00035MEP



ARP00920MEP

Hub Kits

Model Number	Description
ARP00003MEP	1" Hub Kit, Small
ARP00004MEP	1.25" Hub Kit, Small
ARP00005MEP	1.5" Hub Kit, Small
ARP00006MEP	2" Hub Kit, Small
ARP00007MEP	2.5" Hub Kit, Small
ARP00017MEP	2" Hub Kit, Large
ARP00018MEP	2.5" Hub Kit, Large
ARP00019MEP	3" Hub Kit, Large
ARP00020MEP	3.5" Hub Kit, Large
ARP00021MEP	4" Hub Kit, Large



Small Hub



Large Hub

Midwest Electric Products
305 Gregson Drive
Cary, NC 27511
Customer Service: 866-685-0577
Fax: 804-965-1041
www.midwestelectric.com
© 2019 Midwest Electric
MET-040E (12/19)

Information provided is subject to change without notice. Please verify all details with Midwest. All values are design or typical values when measured under laboratory condition, and Midwest makes no warranty or guarantee, express or implied, that such performance will be obtained under end-use conditions.

