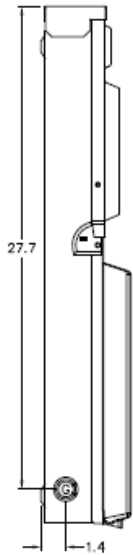


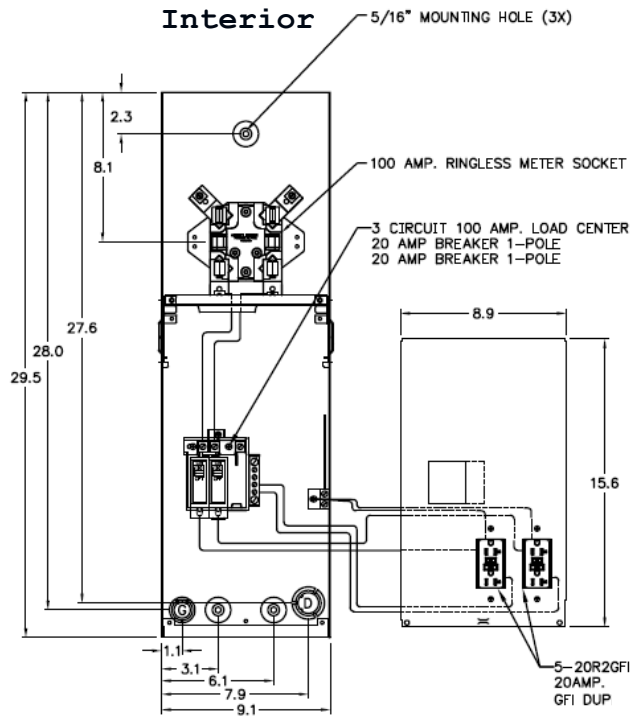
**Knockouts**

G= 1/2", 3/4", 1" KO  
 B= 1", 1-1/4", 1-1/2" KO  
 D= 3/4", 1", 1-1/4" KO  
 H= 9/32" KO

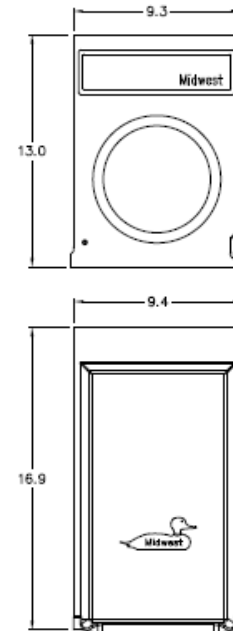
**Left Side View**



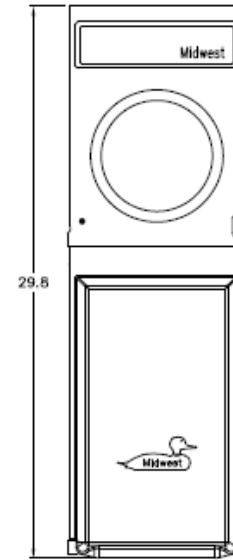
**Front View Interior**



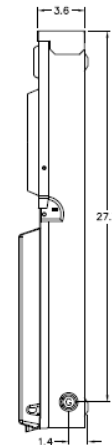
**Front View External Covers**



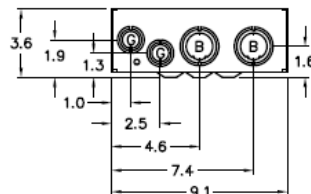
**Right Side View**



**Configuration**



**Bottom View**



**Receptacles**

(2) 5-20R2GFCI

**Circuit Protection**

(2) THQL1120  
 SPACE THQL1120

**Wire Range Size**

Connector	Copper		Aluminum	
	Solid	Stranded	Solid	Stranded
Line	----	6-1/0	----	6-1/0
Load	14-10	14-10	----	----
Neutral (Large Hole)	12-8	12-1/0	10-8	10-1/0
Neutral (Small Hole)	14-8	14-4	12-8	12-4
Equip. Ground	12-8	12-2	12-8	12-2



Midwest Electric Products  
 Plainville, CT

MIDWEST TEMPORARY POWER 100A METERED TOP FEED  
 1PH 120/240V RINGLESS N3R G90 10K

CAT NO	DWG DATE	REV #
R011C010	07/12/2016	01