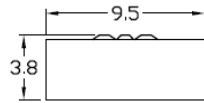


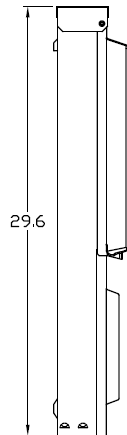
**Top View**



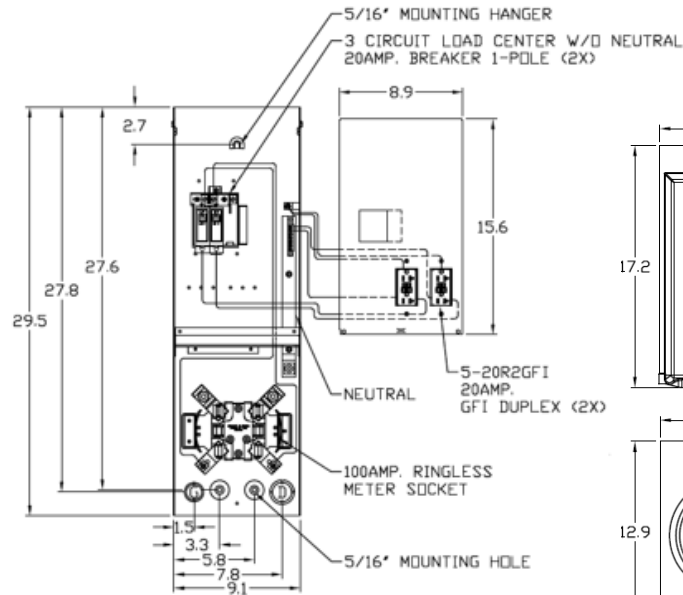
**Knockouts**

G= 1/2", 3/4", 1" KO  
 W= 1/2", 3/4", 1", 1-1/4", 1-1/2", 2" KO  
 D= 3/4", 1", 1-1/4" KO

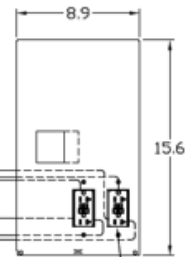
**Left Side View**



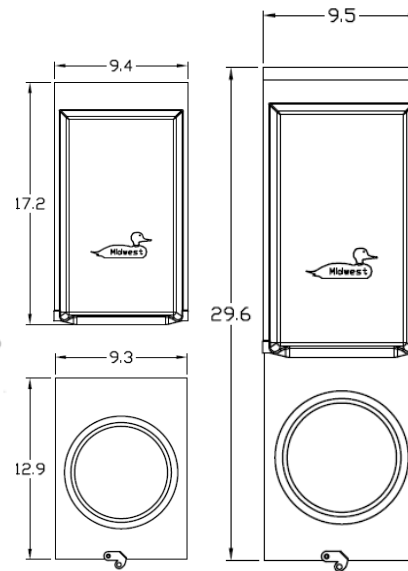
**Front View Interior**



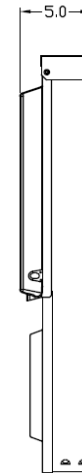
**Front View Inside Cover**



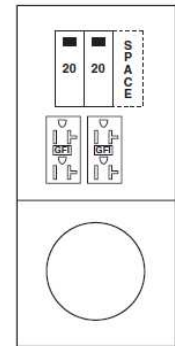
**Front View External**



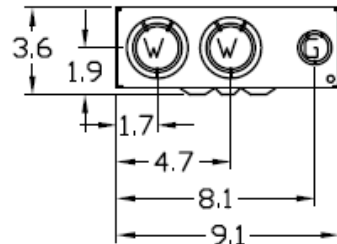
**Right Side View**



**Configuration View**



**Bottom View**



**Receptacles**

(2) 5-20R2GFCI

**Circuit Protection**

(2) THQL1120,  
Space THQL1120

**Wire Range Size**

CONNECTOR	COPPER		ALUMINUM	
	SOLID	STRAND	SOLID	STRAND
LINE	----	6-1/0	----	6-1/0
LOAD	14-10	14-10	----	----
NEUTRAL	----	6-350	----	6-350
NEUTRAL	----	1-300	----	1-300
EQUIP. GRND.	12-8	12-2	12-8	12-2



Midwest Electric Products  
Plainville, CT

Midwest Temporary Power 100A Metered Ringless  
(2) 20A GFCI BRKS Bottom Feed 120/240V 1PH

CAT NO	DWG DATE	REV #
R011C010U	03/16/2017	01