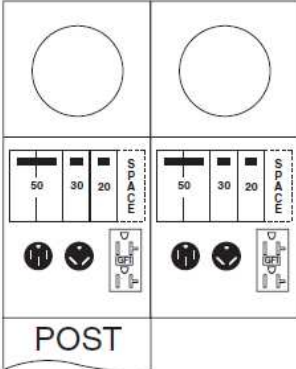


**Configuration**



**Circuit Protection**

- (2) THQL2150
- (2) THQL1130
- (2) THQL1120, (2) SPACE THQL1120

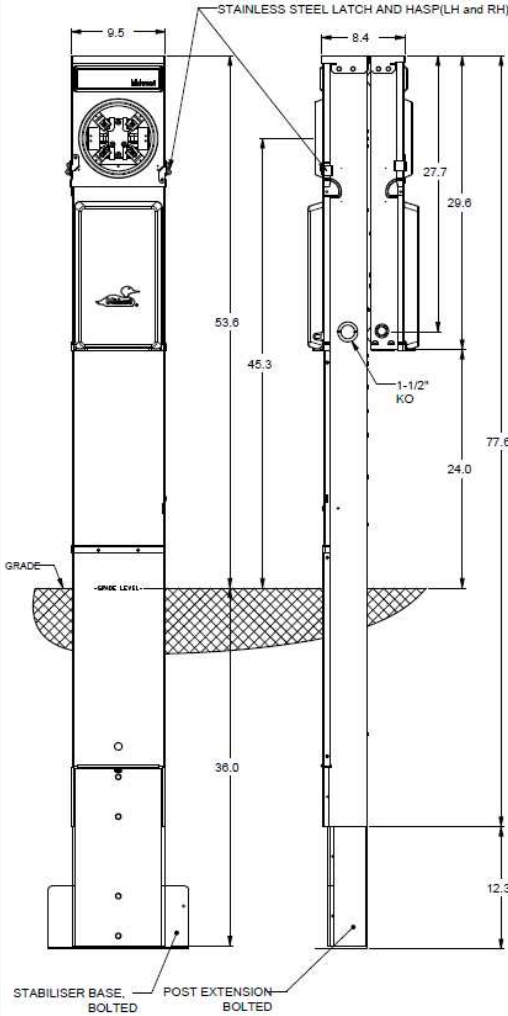
**Receptacles**

- (2) 14-50R
- (2) R32U
- (2) 5-20R2GFCI

**Wire Range Size**

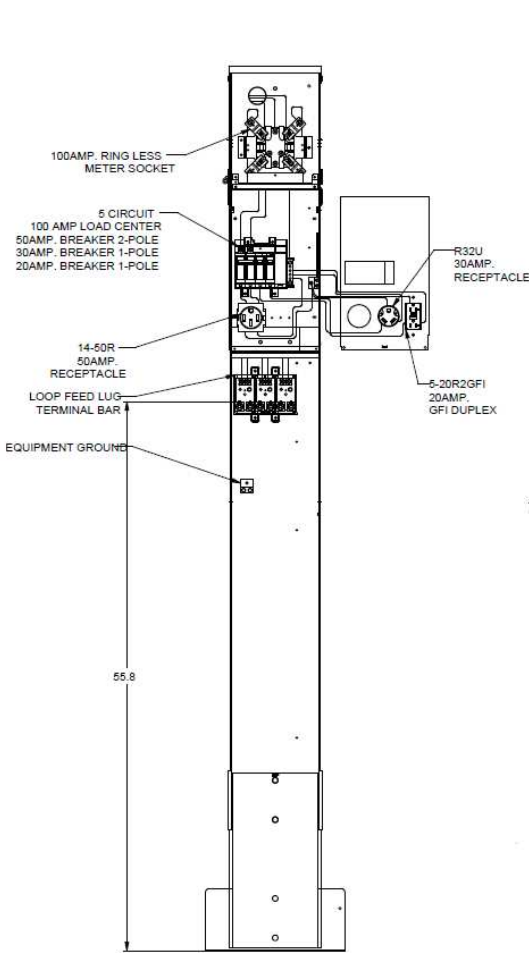
CONNECTOR	COPPER		ALUMINUM	
	SOLID	STRAND	SOLID	STRAND
LINE	---	6-1/0	---	6-1/0
LOAD	14-10	14-10	---	---
NEUTRAL (LARGE HOLE)	12-8	12-1/0	10-8	10-1/0
NEUTRAL (SMALL HOLE)	14-8	14-4	12-8	12-4
POST LINE CONNECTOR SUITABLE FOR LOOP FEED	#6-350 KCMIL		#6-350 KCMIL	
EQUIP. GRND.POST	14-2/0	14-2/0	14-2/0	14-2/0

**Front View Exterior**

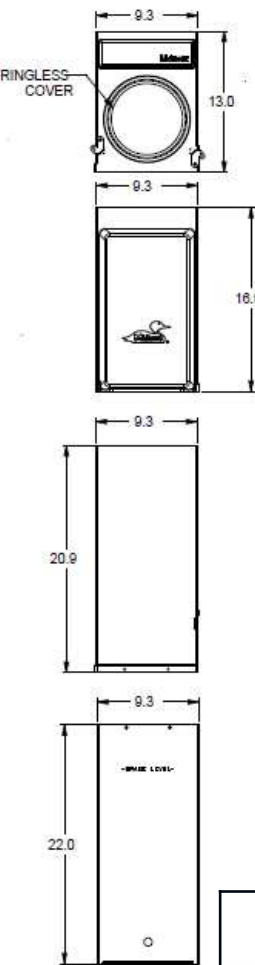


**Right Side View**

**Front View Interior**



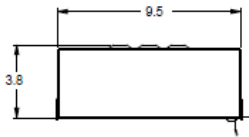
**Front View External Covers**



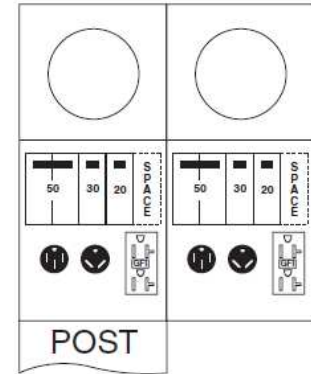
MIDWEST RV EQUIP METALLIC 100A BACK-TO-BACK EARTH BURIAL PEDESTAL RINGLESS MTR 50/30/20AGFI RECP 120V 1PH3W UL LISTED G90 N3R MEG APPROVED

CAT NO	DWG DATE	REV #
R075CB6010FMG	04/18/2017	01

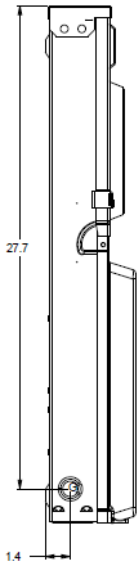
**Top View**



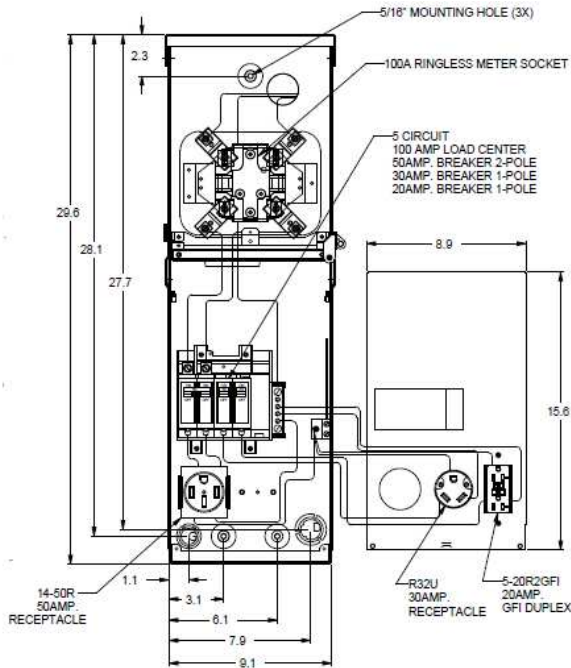
**Configuration**



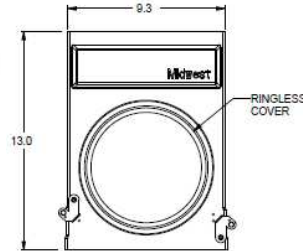
**Left Side View**



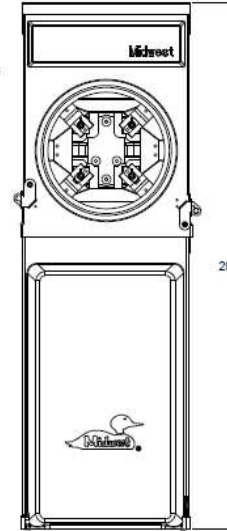
**Front View**



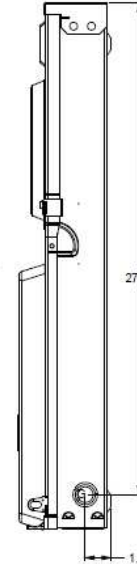
**Front View External Covers**



**Front View External Covers**



**Right Side View**



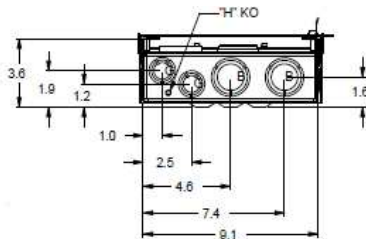
**Circuit Protection**

- (2) THQL2150
- (2) THQL1130
- (2) THQL1120, (2) Space THQL1120

**Receptacles**

- (2) 14-50R
- (2) R32U
- (2) 5-20R2GFCI

**Bottom View**



**Wire Range Size**

CONNECTOR	COPPER		ALUMINUM	
	SOLID	STRAND	SOLID	STRAND
LINE	---	6-1/0	---	6-1/0
LOAD	14-10	14-10	---	---
NEUTRAL (LARGE HOLE)	12-8	12-1/0	10-8	10-1/0
NEUTRAL (SMALL HOLE)	14-8	14-4	12-8	12-4
POST LINE CONNECTOR SUITABLE FOR LOOP FEED	#6-350 KCMIL		#6-350 KCMIL	
EQUIP. GRND. POST	14-2/0	14-2/0	14-2/0	14-2/0



MIDWEST RV EQUIP METALLIC 100A BACK-TO-BACK EARTH BURIAL PEDESTAL RINGLESS MTR 50/30/20AGFI RECPT 120V 1PH3W UL LISTED G90 N3R MEG APPROVED

CAT NO	DWG DATE	REV #
R075CB6010FMG	04/18/2017	01