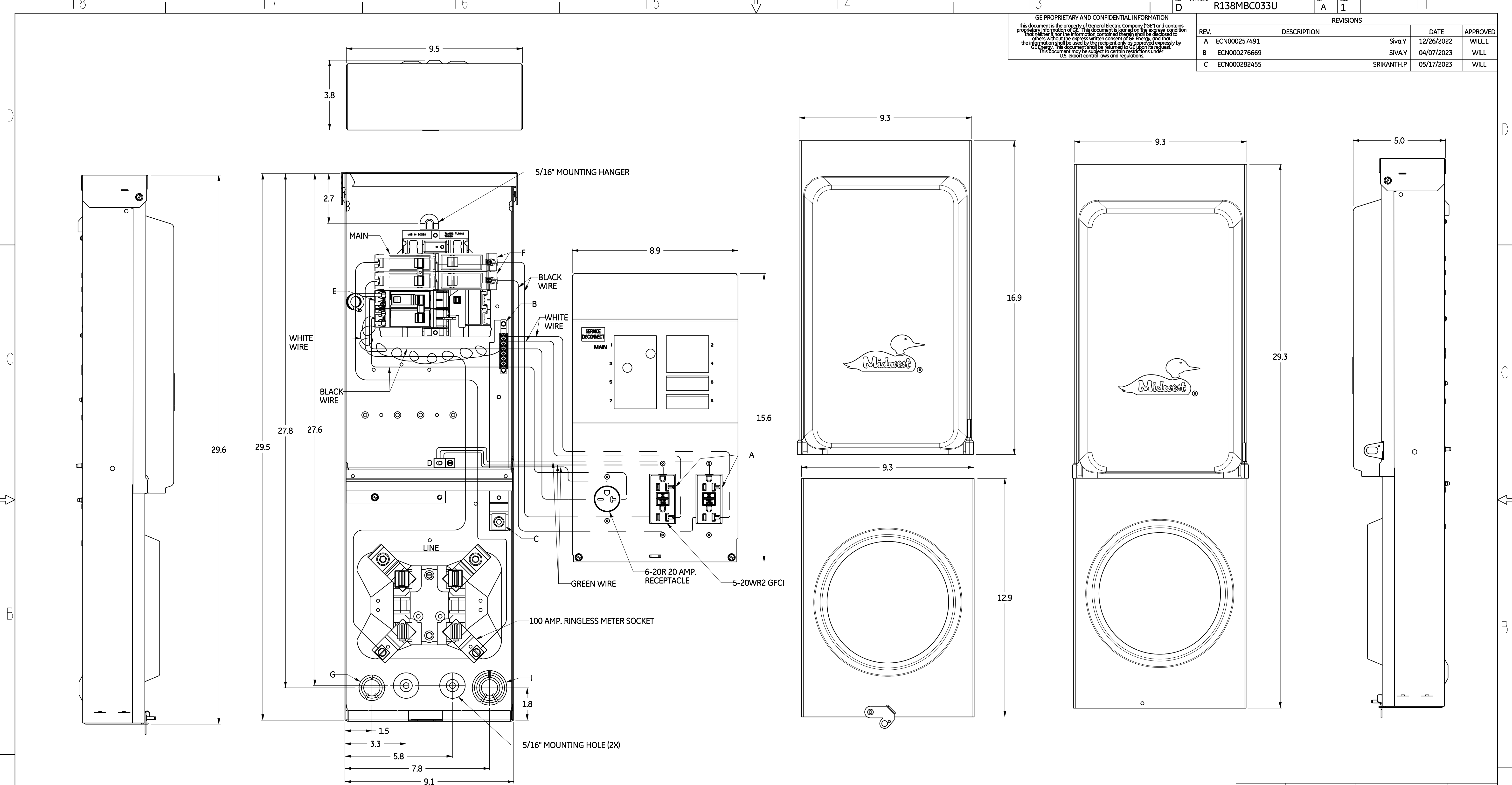


GE PROPRIETARY AND CONFIDENTIAL INFORMATION
 This document is the property of General Electric Company (GE) and contains proprietary information of GE. This document is loaned on the express condition that neither it nor the information contained therein shall be disclosed to others without the express written consent of GE Energy, and that the information shall be used by the recipient only as approved expressly by GE Energy. This document shall be returned to GE upon its request. This document may be subject to certain restrictions under U.S. export control laws and regulations.

DRAWING NO. R138MBC033U		REV. A	SHEET 1
REVISIONS			
REV.	DESCRIPTION	DATE	APPROVED
A	ECN000257491	Siva.Y 12/26/2022	WILL
B	ECN000276669	SIVA.V 04/07/2023	WILL
C	ECN000282455	SRIKANTH.P 05/17/2023	WILL



WIRE RANGE TABLE:

CONNECTOR	COPPER		ALUMINIUM	
	SOLID	STRANDED	SOLID	STRANDED
LINE	-	6-350	-	6-350
LOAD - "A"	14-10	14-10	-	-
NEUTRAL - "B"	14-12	12-8	14-12	12-8
NEUTRAL - "C"	-	1-300	-	1-300
EQUIP. GRND - "D"	12-8	12-2	12-8	12-2

KNOCKOUT TABLE:

G = 1/2", 3/4", 1" KO
H = 1/2", 3/4", 1", 1-1/4", 1-1/2", 2" KO
I = 3/4", 1", 1-1/4" KO

	CIRCUIT PROTECTION	NAME	QUANTITY
MAIN (1 & 3)	THQL21100	2P 120/240V 100AMP	1
"E" 5 & 7	THQL2120GFT	GFCI 2P 20A 120V	1
"F" (2 & 4)	THQL1120	1 POLE 120/240V 20AMP	2

APPLIED PRACTICES	SIGNATURES	DATE
UNLESS OTHERWISE SPECIFIED IN DRAWING	MODEL: TEJA	12-23-22
TOLERANCE ON: 1 PL DECIMALS ± 0.1	DETAIL: TEJA	12-23-22
2 PL DECIMALS ± 0.02	CHECKED: WILL	12-23-22
3 PL DECIMALS ± 0.005	ENGRG:	
ANGLES ± 1.0	MFG:	
FRACTIONS ±	QUALITY:	
FINISH:	ISSUED:	
CRITICAL TO QUALITY CHARACTERISTIC	DRAWING FILE: R138MBC033UM01_OD	
	SOLID MODEL: R111MBC010M01	

Midwest Electric Products

TITLE: R138MBC033UM01 OUTLINE DRAWING/ 100A 120/240V MAIN 9" 20/GFCI RECPT/GFI BRKR TEMPORARY POWER SERVICE EQUIPMENT

SIZE: D DRAWING: R138MBC033U REV: C

SCALE: 1:000 SHEET 1 OF 1

Part must conform to SI 900000 Sect. 4, Toxicity Procedure

