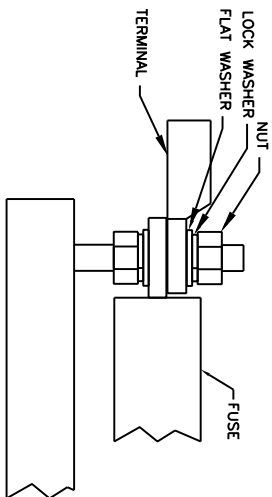
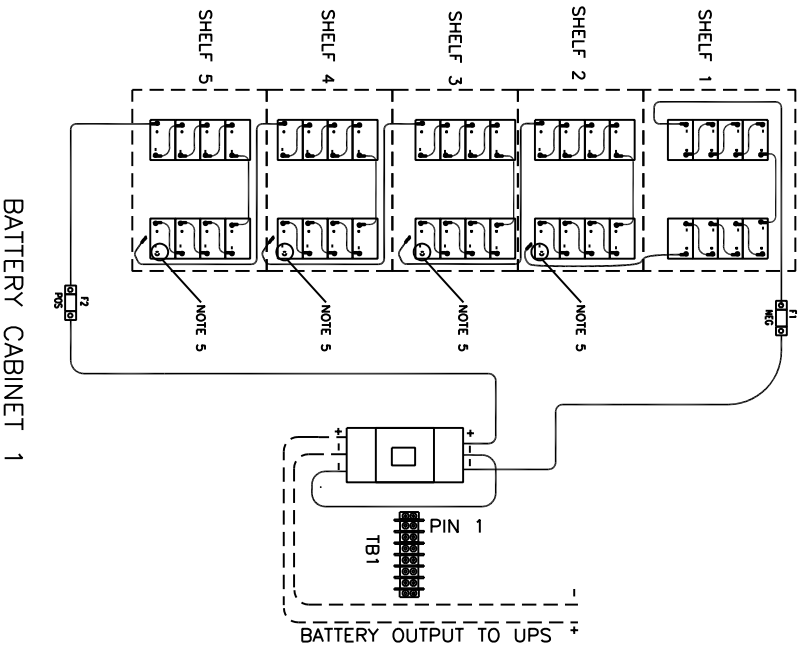
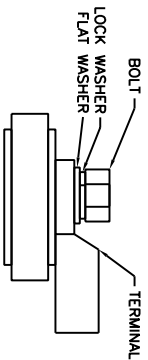


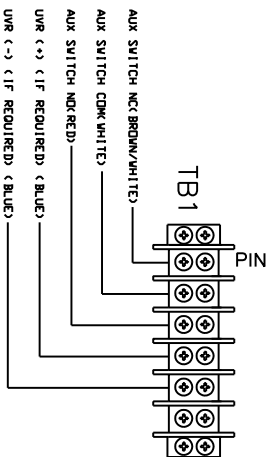
CAUTION: HIGH VOLTAGE
RISK OF ELECTRICAL SHOCK



DETAIL A
HARDWARE STACKUP FOR FUSE CONNECTION
SEE TORQUE SETTING/HARDWARE CHART ON SHEET 5



DETAIL B
HARDWARE STACKUP FOR BATTERY CONNECTION
SEE TORQUE SETTING/HARDWARE CHART ON SHEET 5



DETAIL C
AUX SWITCH AND UVR CONTACTS

SINGLE BATTERY CABINET CONNECTION

THIS ILLUSTRATION IS DESIGNED TO GIVE AN OVERALL VIEW OF THE PRODUCT AND ITS COMPONENTS, SUCH AS, BUT NOT LIMITED TO BATTERIES, FUSES, DISCONNECTS AND TERMINAL STRIPS. THESE COMPONENTS HAVE BEEN POSITIONED TO BETTER ILLUSTRATE THE COMPONENT AND ITS CONNECTION IN THE SYSTEM.

NOTES:

- 1) ALWAYS WEAR EYE PROTECTION
- 2) ALL TOOLS SHOULD BE INSULATED TO PREVENT ELECTRICAL SHOCK. DO NOT ALLOW TOOLS OR CABLES TO REST ON BATTERIES.
- 3) ONLY QUALIFIED TECHNICIANS SHOULD PERFORM INSTALLATION AND MAINTENANCE OF THIS BATTERY SYSTEM. THE CUSTOMER AND/OR CONTRACTOR SHALL BE RESPONSIBLE FOR INSTALLING THIS EQUIPMENT IN ACCORDANCE WITH ALL APPLICABLE CODES AND REGULATIONS.
- 4) REMOVE ALL FUSES AND/OR OPEN DISCONNECTS BEFORE INSTALLATION OR MAINTENANCE.
- 5) EACH BATTERY SYSTEM IS SHIPPED WITH INTER-STRING CABLES DISCONNECTED AS A SAFETY PRECAUTION. THESE DISCONNECTIONS MUST BE MADE BEFORE ENERGIZING THE BATTERY SYSTEM.
- 6) FLAT SIDE OF TERMINAL LUG SHOULD BE PLACED AGAINST BATTERY TERMINAL (SEE DETAIL B)
- 7) DASHED LINES REPRESENT CUSTOMER SUPPLIED CONNECTIONS/FOLLOW NEC CODE FOR PROPER SIZING OF INTERCONNECT CABLES OR CONTACT GE FOR ASSISTANCE).
- 8) CHECK DC VOLTAGE AT BATTERY OUTPUT AND UPS OUTPUT TO INSURE PROPER POLARITY BEFORE MAKING FINAL CONNECTIONS FROM THE BATTERY SYSTEM.
- 9) ALL RECOMMENDED CUSTOMER'S CABLE GAUGES ARE BASED ON TABLE 310-16 OF N.E.C. USING 75°C CABLE IN 30°C AMBIENT.
- 10) INTERNAL BREAKER IS FOR OVERCURRENT PROTECTION ONLY.
- 11) REPLACE WITH SAME TYPE AND RATING OF FUSE.
- 12) TIGHTENING TORQUE FOR TB1 IS 9.6 IN-LB

GE Industrial Systems GENERAL ELECTRIC COMPANY

TITLE

LIT GE SG 27IN BAT CAB INSTALL

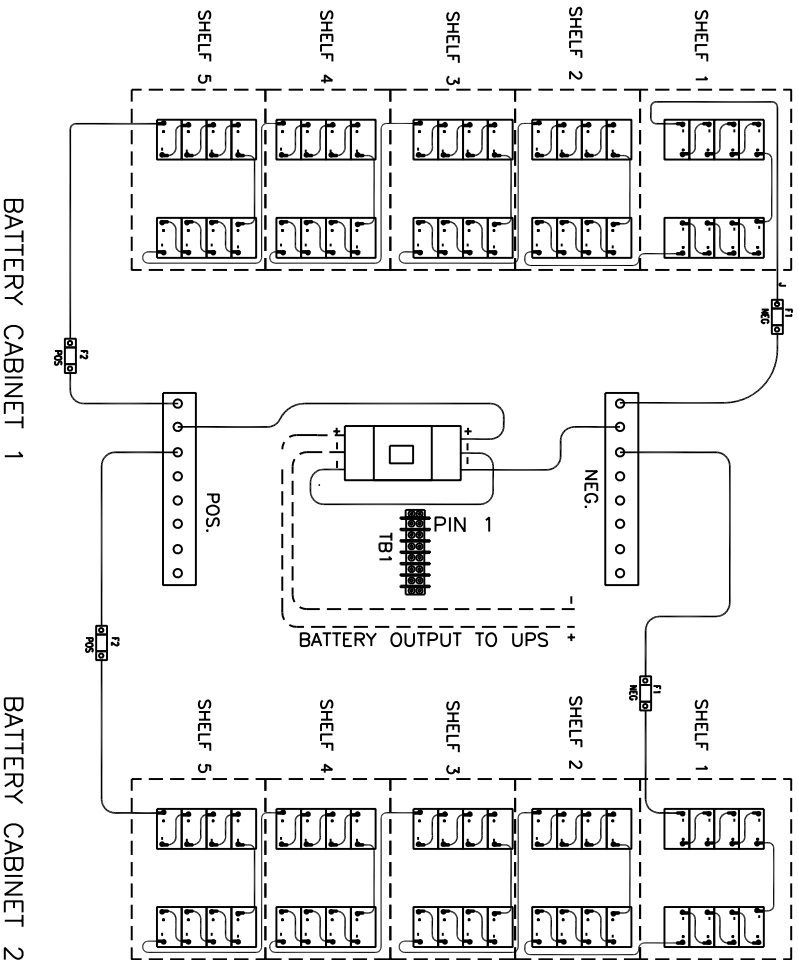
SIZE DRAWING

B 2020001502 REV

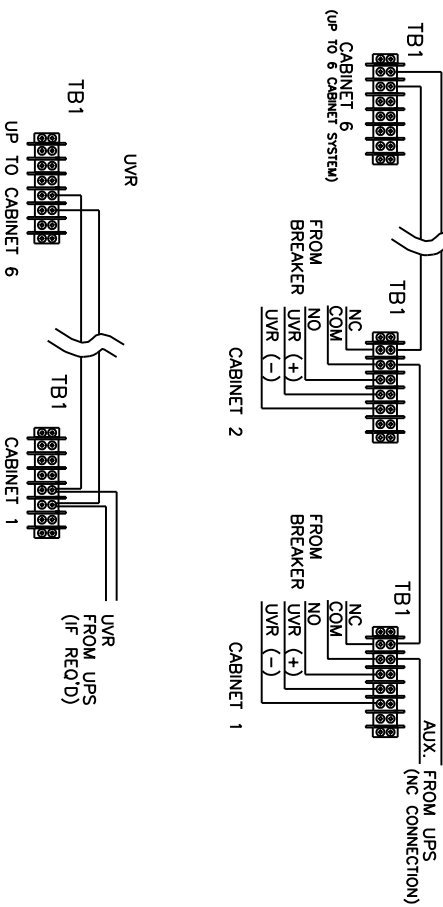
DATE:

SHEET 1 of 6

CAUTION: HIGH VOLTAGE
RISK OF ELECTRICAL SHOCK



CONNECT AUX. CONTACTS IN SERIES
FOR NC AUX. CONTACTS ON MULTIPLE CABINETS
(MIN. 22 AWG WIRE)



CONNECT THE UVR FOR ALL CABINETS
IN PARALLEL WHEN USING MULTIPLE
BATTERY CABINETS

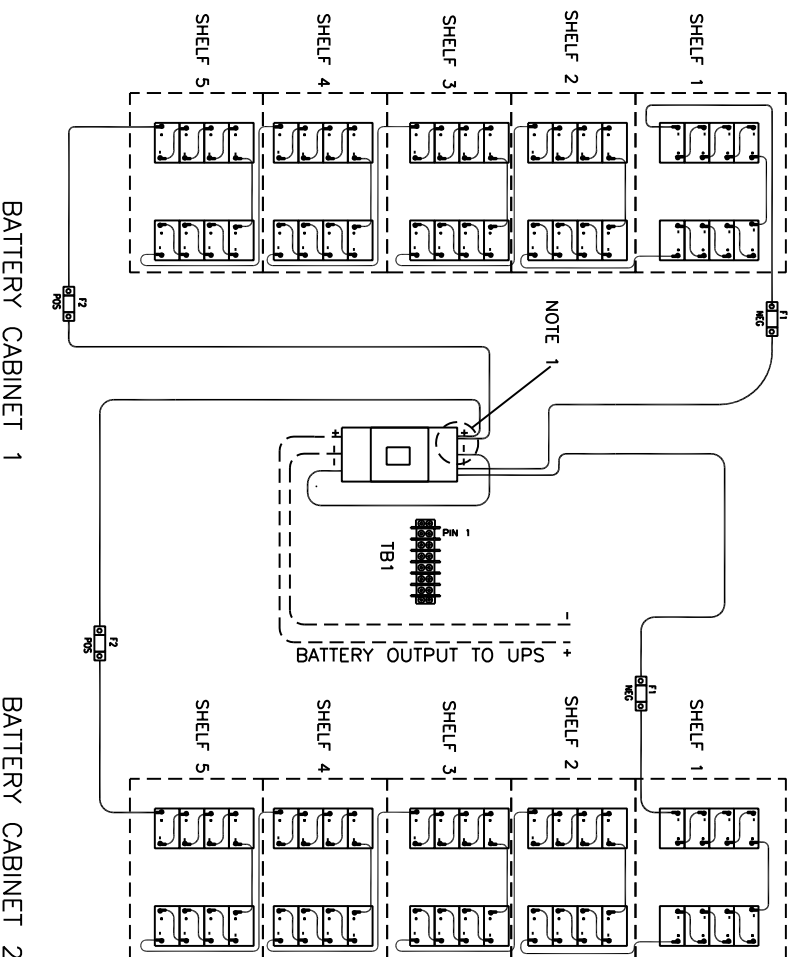
GE Industrial Systems GENERAL ELECTRIC COMPANY

TITLE
LIT GE SG 27IN BAT CAB INSTALL

SIZE DRAWING	2020001502	REV
DATE:		
		SHEET 2 of 6

MULTIPLE BATTERY CABINET CONNECTION (10KVA – 100KVA, 35A–250A BREAKER)
THIS ILLUSTRATION IS DESIGNED TO GIVE AN OVERALL VIEW OF THE PRODUCT AND ITS COMPONENTS, SUCH AS, BUT NOT LIMITED TO BATTERIES, FUSES, DISCONNECTS AND TERMINAL STRIPS. THESE COMPONENTS HAVE BEEN POSITIONED TO BETTER ILLUSTRATE THE COMPONENT AND ITS CONNECTION IN THE SYSTEM.

CAUTION: HIGH VOLTAGE
RISK OF ELECTRICAL SHOCK



NOTE:
1) BREAKER LUGS ALLOW FOR
MULTIPLE WIRE TO BE INSTALLED

MULTIPLE BATTERY CABINET CONNECTION (120KVA - 150KVA, 300A-400A BREAKER)

THIS ILLUSTRATION IS DESIGNED TO GIVE AN OVERALL VIEW OF THE PRODUCT AND ITS COMPONENTS, SUCH AS, BUT NOT LIMITED TO BATTERIES, FUSES, DISCONNECTS AND TERMINAL STRIPS. THESE COMPONENTS HAVE BEEN POSITIONED TO BETTER ILLUSTRATE THE COMPONENT AND ITS CONNECTION IN THE SYSTEM.

 <i>GE Industrial Systems</i>	GENERAL ELECTRIC COMPANY
	TITLE

LIT GE SG 27IN BAT CAB INSTALL

SIZE DRAWING

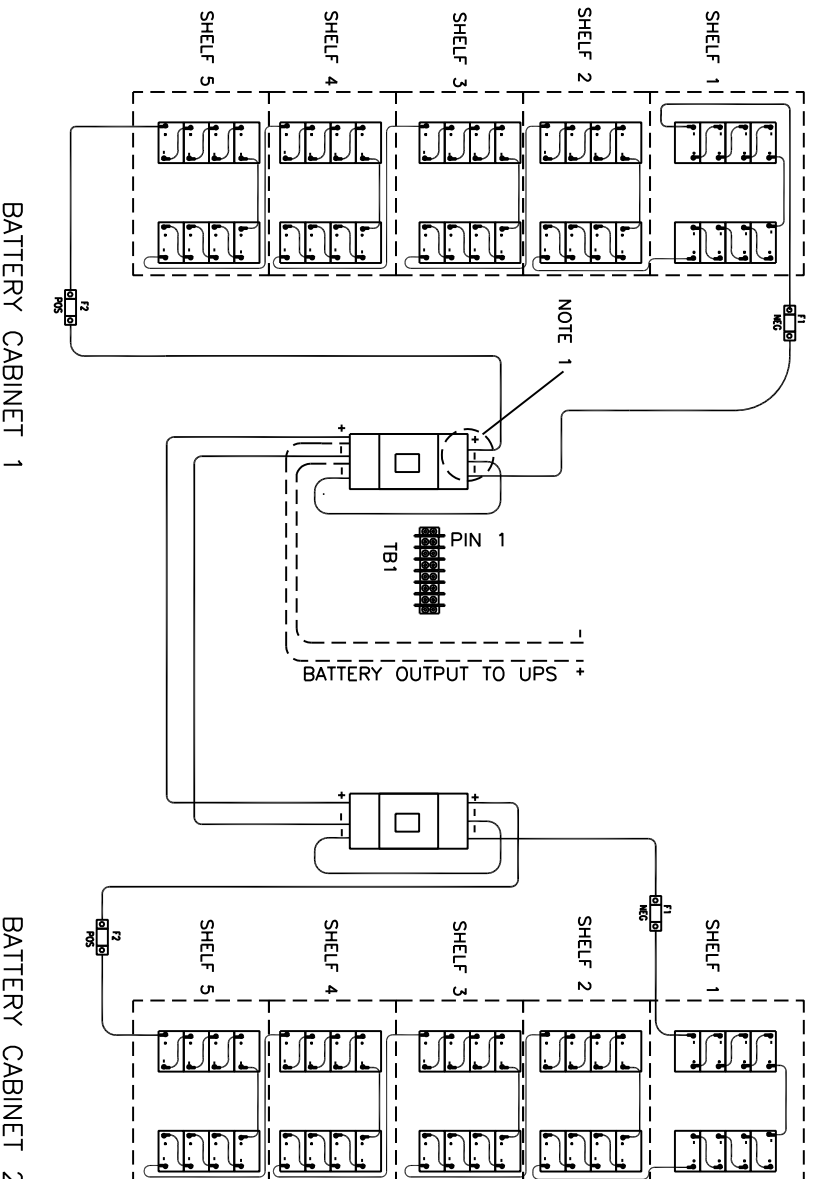
A 2020001502

REV

DATE:


SHEET 3 of 6

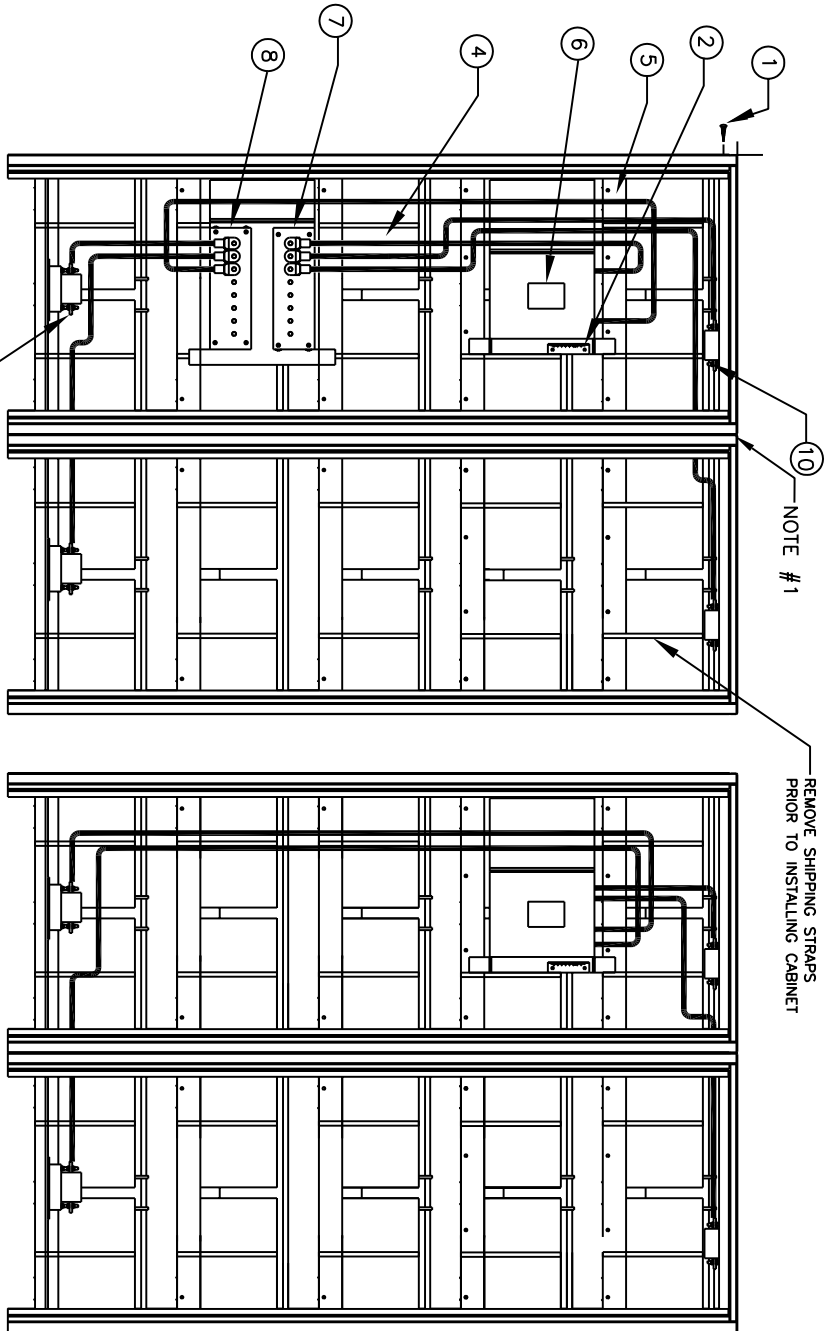
CAUTION: HIGH VOLTAGE
RISK OF ELECTRICAL SHOCK



NOTE:
1) BREAKER LUGS ALLOW FOR
MULTIPLE WIRE TO BE INSTALLED

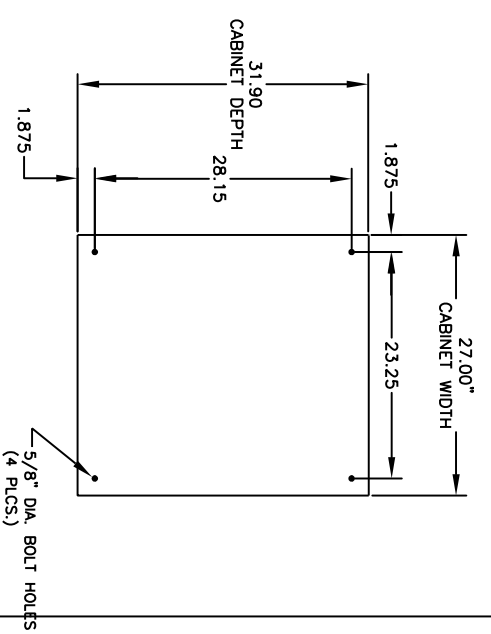
MULTIPLE BATTERY CABINET CONNECTION (225KVA)
THIS ILLUSTRATION IS DESIGNED TO GIVE AN OVERALL VIEW OF THE PRODUCT AND ITS COMPONENTS, SUCH AS, BUT NOT LIMITED TO BATTERIES, FUSES, DISCONNECTS AND TERMINAL STRIPS. THESE COMPONENTS HAVE BEEN POSITIONED TO BETTER ILLUSTRATE THE COMPONENT AND ITS CONNECTION IN THE SYSTEM.

 GE Industrial Systems		GENERAL ELECTRIC COMPANY	
TITLE			
LIT GE SG 27IN BAT CAB INSTALL			
SIZE DRAWING		REV	
A		2020001502	
DATE:		SHEET 4 of 6	



- NOTES:
- 1) IF MULTIPLE CABINETS ARE INTENDED TO BE USED AND THE SIDE PANELS BETWEEN EACH HAVE BEEN REMOVED INSTALL CABINETS IN A MANNER THAT ELIMINATES ANY GAP BETWEEN.
 - 2) FOR 10KVA - 225KVA SYSTEMS THE PRIMARY CABINET (CAB. 1) ONLY WILL BE EQUIPPED WITH A DC BREAKER.
 - 3) SEE LABEL ON EACH BREAKER.
 - 4) CONNECTION TO THE POS. OR NEG. BUS PLATES IS DONE BY USING THE 3/8" STUDS MOUNTED TO EACH PLATE.
 - 5) LEFT & RIGHT SIDE PANELS ARE NOT PROVIDED FOR INTERIOR CABINETS.

TORQUE SETTINGS FOR HARDWARE & COMPONENTS			
ITEM	DESCRIPTION	QTY	TORQUE (IN-LBS)
1	PANEL SCREWS (ALL SIDES)	24	20
2	TERMINAL BLOCK TB1	1	9.6
4	VRLA BATTERIES	80	100
5	REMOVABLE SHELF ANGLES	5	130
6	DC CIRCUIT BREAKERS	-	-
	E150	1	55
	F225	1	275
	J600	1	275
7	BUS PLATE - NEG(-)	1	120
8	BUS PLATE - POS(+)	1	120
9	FUSE - POS(+), F2	1	120
10	FUSE - NEG(-), F1	1	120



GE Industrial Systems GENERAL ELECTRIC COMPANY

TITLE: LIT GE SG 27IN BAT CAB INSTALL

SIZE: DRAWING A

DATE:

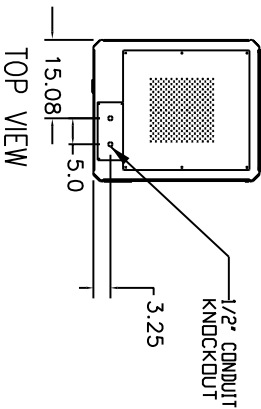
2020001502

REV

SHEET 5 of 6

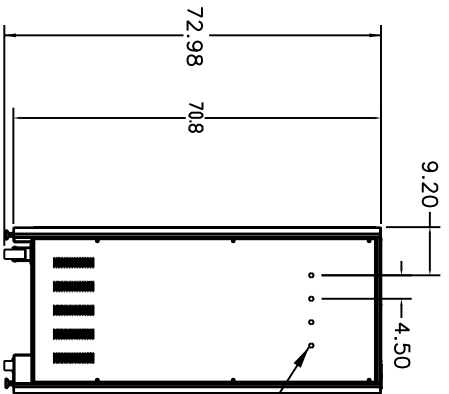
NOTE:

- 1) ALL DIMENSIONS ARE IN INCHES
- 2) TWO SIDE PANELS SHIPPED PER SYSTEM (AS SHOWN)
- 3) 1/2" CONDUIT KNOCKOUTS ARE PROVIDED IN EACH CABINET. IF LARGER CONDUIT IS REQUIRED, USE A PUNCH OR DRILL TO ENLARGE HOLES TO THE DESIRED SIZE. REMOVE PANELS BEFORE PUNCHING OR DRILLING.
- 4) CABINET LIFTING PROVISIONS:
 - A) CABINET CAN BE REMOVED FROM PALLET EITHER FROM THE FRONT OR BACK
 - B) DO NOT LIFT CABINET FROM THE SIDES
 - C) ALL BANDING AND STRAPPING SHOULD BE REMOVED FROM CABINET
 - D) UNSCREW CABINET ANCHOR BOLTS THAT SECURE IT TO THE PALLET
 - E) POSITION THE FORKS OF THE FORK LIFT SUCH THAT THEY WILL NOT INTERFERE WITH ANY SCREWS AND SLOWLY LIFT CABINET

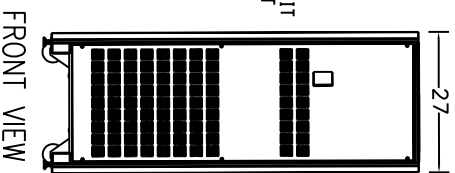


PART NUMBER	SGAxxx-01	SGAxxx-02	SGAxxx-03	SGAxxx-04
WEIGHT	1683 lbs	2043 lbs	3043 lbs	3123 lbs
# OF BATTERYS	40	40	40	40

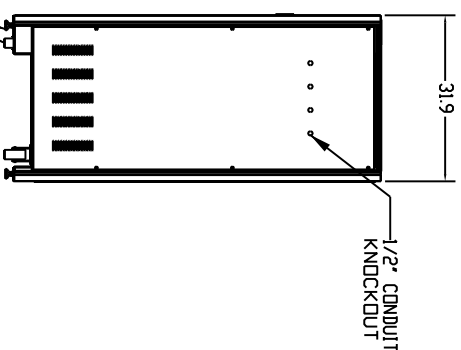
CABINET TYPE	OVERALL CABINET DIMENSIONS			
	W	D	H	
SGAxxx	27"	31.9"	70.8"	
	665.80	810.26	1798.32	



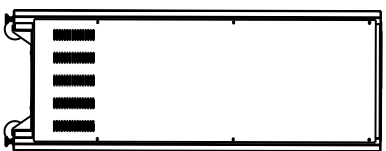
SIDE VIEW



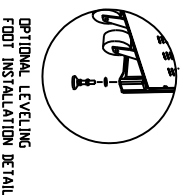
FRONT VIEW



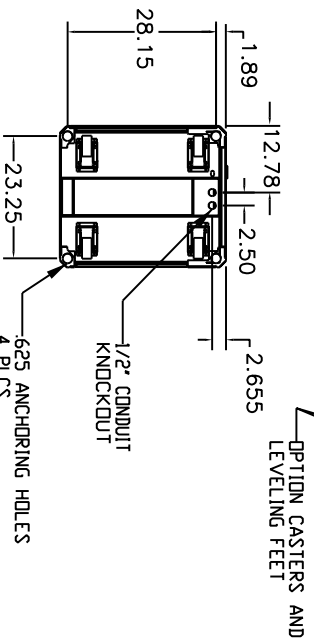
SIDE VIEW



REAR VIEW



OPTIONAL LEVELING FOOT INSTALLATION DETAIL



625 ANCHORING HOLES
4 PLCS

OPTIONAL LEVELING FEET

		<i>GE Industrial Systems</i>		GENERAL ELECTRIC COMPANY	
TITLE					
LIT GE SG 27IN BAT CAB INSTALL					
SIZE DRAWING					
A					
DATE:					
2020001502					
REV					
6					
SHEET 6 of 6					