


kVA	WEIGHT	HEAT REJECTION	FLOOR LOADING
10	735 lbs	3,036 BTU/hr	126 lbs/sq.ft
20	763 lbs	6,751 BTU/hr	131 lbs/sq.ft
UPS W/INTERNAL BATTERY			
kVA	WEIGHT	HEAT REJECTION	FLOOR LOADING
10	1,121 lbs	3,036 BTU/hr	192 lbs/sq.ft
20	1,169 lbs	6,751 BTU/hr	200 lbs/sq.ft

 **GE Industrial Systems** GENERAL ELECTRIC COMPANY

TITLE: MECHANICAL OUTLINE
DIGITAL ENERGY SG SERIES 10-20kVA

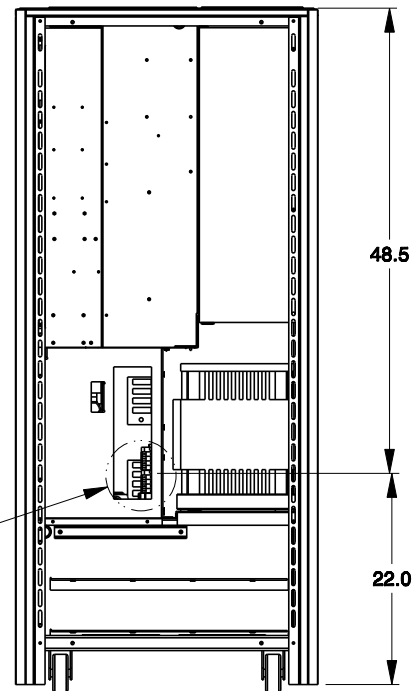
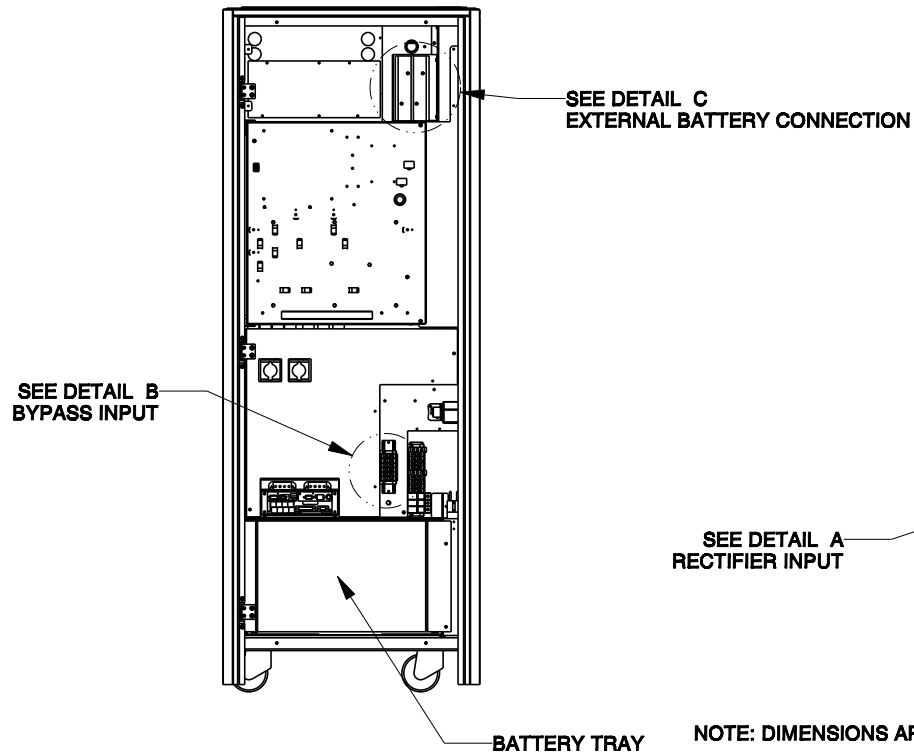
SIZE: DRAWING A
 2000010401
 REV

DATE: _____ SHEET 1 of 1



FRONT VIEW WITH SAFETY PANELS REMOVED

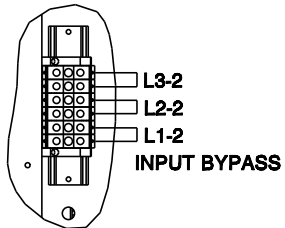
RIGHT SIDE VIEW WITH PANEL REMOVED



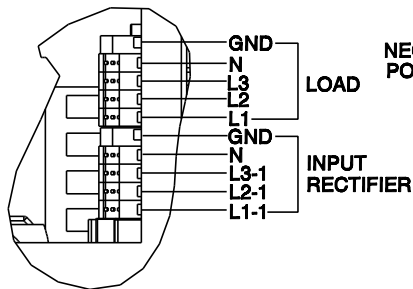
NOTE: DIMENSIONS ARE IN INCHES

MAX CABLE DIA. FOR CABLE LUGS. REFER TO MANUAL FOR TORQUE SPECS

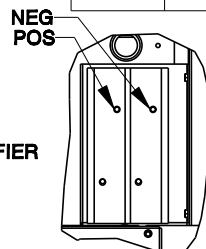
kVA	RECTIFIER INPUT	BYPASS INPUT	DC INPUT	AC OUTPUT	GND
10	3 AWG	3 AWG	3 AWG	3 AWG	3 AWG
20	3 AWG	3 AWG	3 AWG	3 AWG	3 AWG



DETAIL B



DETAIL A



DETAIL C
BATTERY CONNECTION



GE Industrial Systems

GENERAL ELECTRIC COMPANY

TITLE

TERMINAL DETAIL

DIGITAL ENERGY SG SERIES 10-20kVA

SIZE DRAWING

A

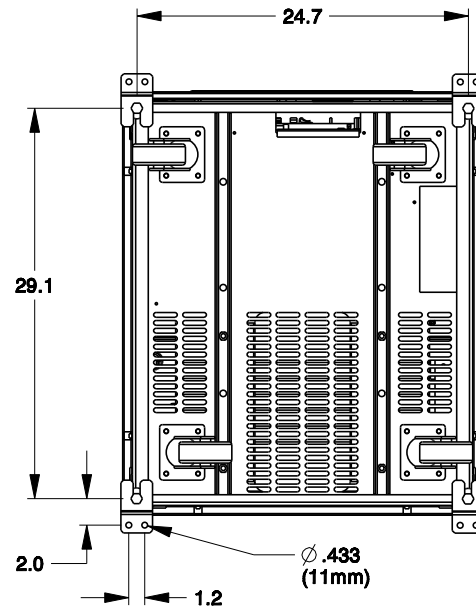
2000010501

REV

DATE:

SHEET 1 OF 1

BOTTOM VIEW SHOWING ANCHORING PROVISIONS

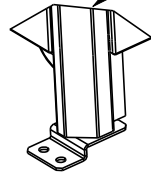
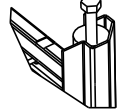


REAR SIDE

LEVELING FOOT

ANCHORING BRACKET
SUPPLIED WITH UNIT

ANCHORING BRACKET
SECURED TO UPS WITH
LEVELING FOOT



DETAIL A

DETAIL B

NOTE:
1) ALL DIMENSIONS ARE IN INCHES



*GE Industrial
Systems*

GENERAL ELECTRIC COMPANY

TITLE

ANCHORING DETAIL

DIGITAL ENERGY SG SERIES 10-20 kVA

SIZE DRAWING

A

2000010601

REV

DATE:

SHEET 1 of 1