

GE Consumer & Industrial
Power Protection

Technical Data Sheets

Digital Energy™ Uninterruptible Power Supply *ISM (Intelligent Synchronization Module)*

SG Series 80 – 200 kVA / 400Vac CE / Series 0

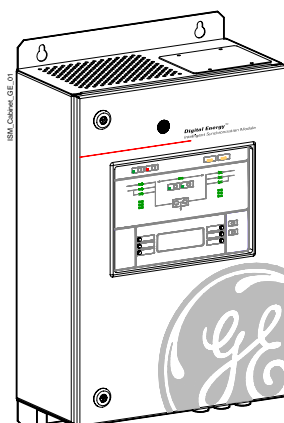
SG-CE Series 160 – 300 kVA & SG-CE Series 160 – 300 kVA PurePulse™ / 400Vac CE / Series 1

SG Series 10 – 500 kVA / 480Vac UL

SitePro 10 – 500 kVA / 400Vac CE / From Series 6

SitePro A 10 – 300 kVA / 480Vac UL / Series 6

Date of issue: 28.03.2007



Manufactured by:

GE Consumer & Industrial SA
General Electric Company
CH – 6595 Riazzino (Locarno)
Switzerland

T +41 (0)91 / 850 51 51

F +41 (0)91 / 850 51 44

www.gedigitalenergy.com



GE imagination at work

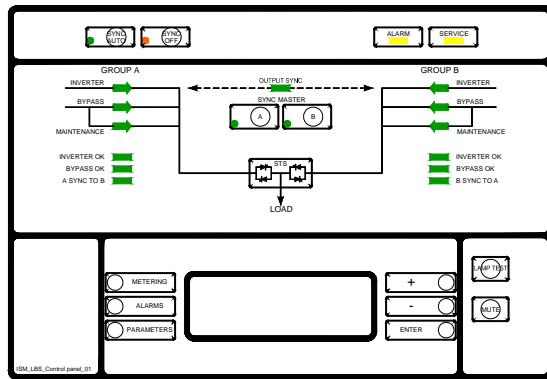


Certified
Quality System
ISO 9001
Reg.No.CSQ 9130.GELE

GENERAL DATA	
Power consumption	25 W
Audible noise level	<35 dB(A)
Operating temperature range	0°C to 40°C
Storage temperature range	-25°C to +55°C
Relative humidity	Max. 95% (non-condensing)
Protection degree	IP 20 (IEC 60529)
Standards	EN 50091-1 / IEC 62040-1, IEC 60950, CE marking UL 1778, UL listed & CSA certified
EMC	EN 50091-2 / IEC 62040-2 / FCC Class A
Electrostatic discharge immunity	4 kV contact / 8 kV air discharge
Transport	Carton box or wooden case suitable for handling by forklift
Colour	RAL 9010 (white)
Installation	Wall mounted
Access	At front of the cabinet
External cable connections	Bottom or top
Cooling	Normal air flow (openings on top and bottom)
Number of UPS groups	2
Max. number of UPSs in a group	6 UPS units (ranging from 10 - 500 kVA) except for SG-CE Series 160-300 kVA S1 which allows a maximum of 5 UPS units
Max. distance between ISM and last unit of each group	85 m / 279 ft

TECHNICAL DATA	
Standard input voltage	Nominal ph-ph voltages: 208V / 400V / 480V + PE (+15 / -20%)
Input frequency range	50 ÷ 60 Hz (+/-10%)
Synchronization precision	<0.2°
Serial communication UPSs / ISM	Redundant, protected by CRC codes
Power supply	Redundant

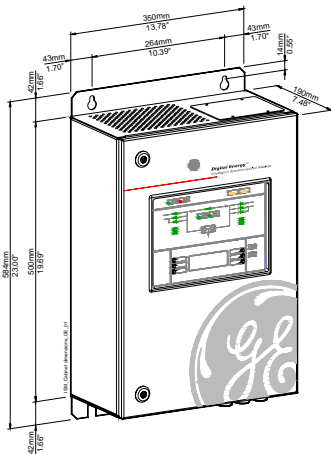
FRONT PANEL CONTROLS, SIGNALS & ALARMS



The control panel allows full ISM control.

The LCD screen shows **ISM** system data, status messages, alarm messages, settings.

DIMENSIONS AND WEIGHT



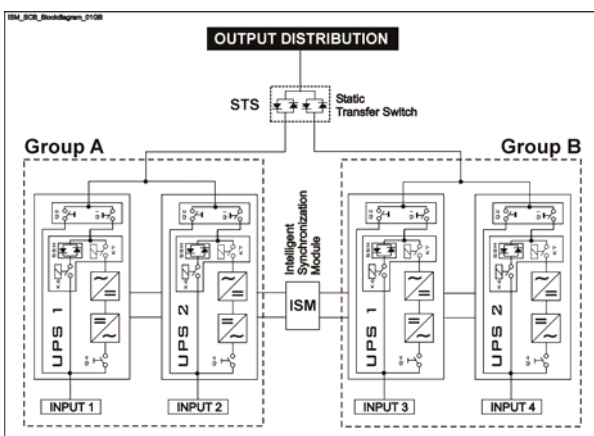
Dimensions ISM

350 mm x 190 mm x 584 mm
13.78" x 7.48" x 23.00 inches

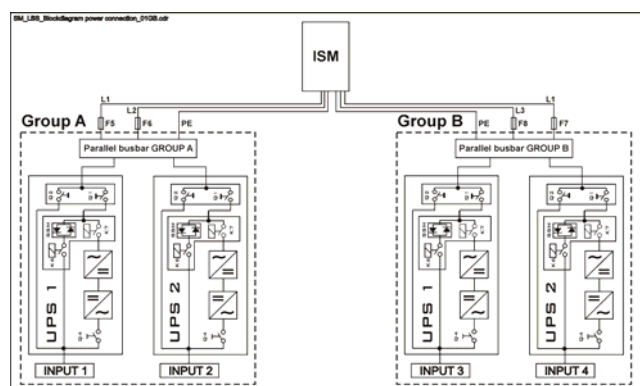
Weight ISM

ISM	ISM with standard package
20 Kg / 44 lbs	30 Kg / 66 lbs

FUNCTIONAL DIAGRAM, PROTECTION AND CABLE SECTIONS



ISM Block diagram



Input overcurrent protection and wire sizing

Fuses AgL or Circuit breakers

Group A: F5 - F6 & Group B: F7 - F8 2 x (2 x 2 A)

Wire sizing

Group A: L1 + L2 + PE Min. 3 x 1.5 mm² / Max. 3 x 2.5 mm²
Group B: L1 + L3 + PE Min. 3 x 16 AWG / Max. 3 x 14 AWG