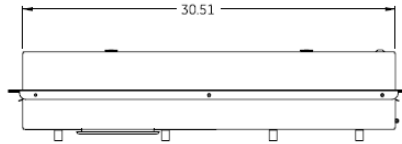


### Top View



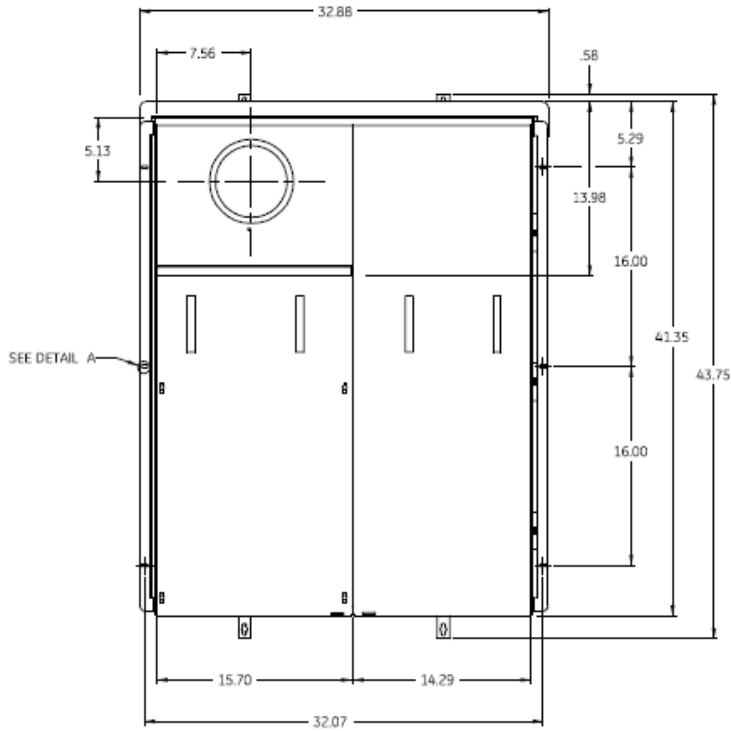
### Main Wire Size Terminals

1/2" Studs Provisions for UL Listed One or Two Hole NEMA Mounting Terminals  
 Compression Terminals Limited to 800 KCMIL Single Conductor, HOMAC Series AL-NTN, AL-TN or Equivalent.  
 Compression Terminals Limited to 400 KCMIL for Stacking Lugs, HOMAC Series ASL-NTN or Equivalent.  
 Pressure Terminals Limited to 1000 KCMIL Single Conductor, ILSCO Type TA or Equivalent.  
 Pressure Terminals Limited to 350 KCMIL Single Conductor, ILSCO Type AU or Equivalent.

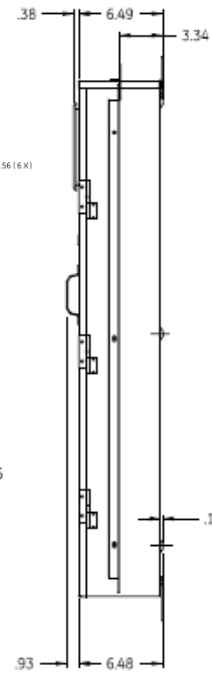
### Notes

Utility main breaker (THQD) factory installed. Optional secondary main can be field installed

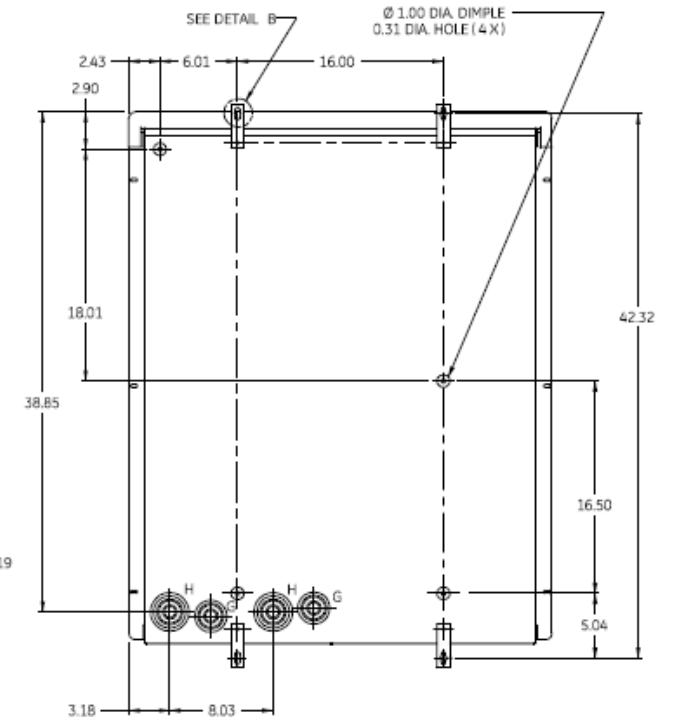
### Front View



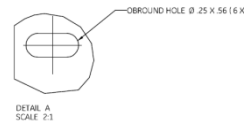
### Side View



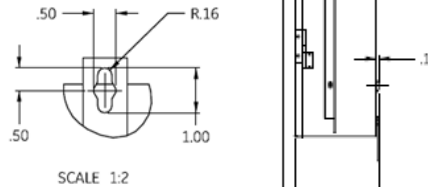
### Back View



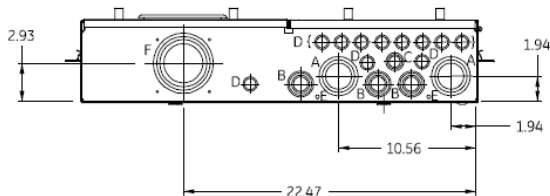
### Detail A



### Detail B



### Bottom View



Note : All Dimensions have ±0.125 Tolerance

LETTER	DESCRIPTION	QTY
A	1 1/2 x 2 x 2 1/2 KO	2
B	3/4 x 1 x 1 1/4 x 1 1/2 KO	3
C	1/2 x 3/4 x 1 KO	1
D	1/2 x 3/4 KO	11
E	9/32 KO	2
F	2 1/2 x 3 x 3 1/2 x 4 KO	1
G	1/2 x 3/4 x 1 1/4 x 1 1/2 x 2 KO	2
H	1/2 x 3/4 x 1 1/4 x 1 1/2 x 2 x 2 1/2 KO	2



imagination at work

Main Breaker Dual MCB – THQD – Ringless - 300A - 22K-24/40 Ckt-N3R  
 Encl-Lever Bypass-Semiflush Front-UG Incoming Feed-Xcel & EUSERC

CAT NO	DWG DATE	REV #
TMH2430RMRS	6/4/2015	01