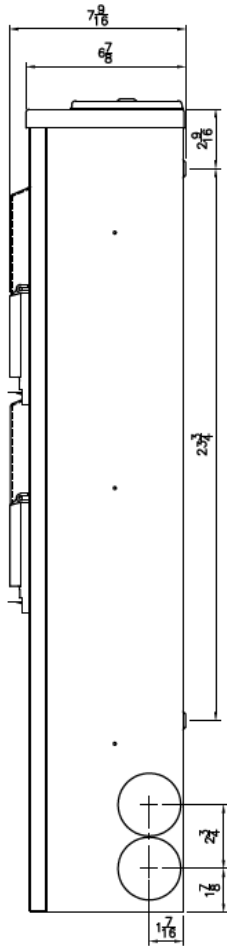
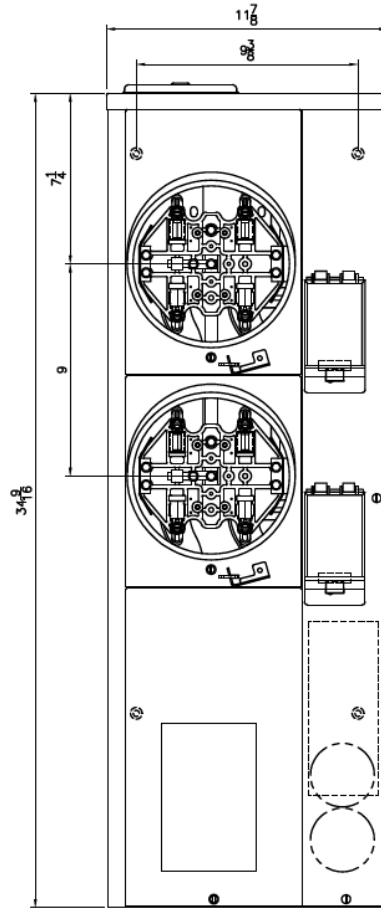


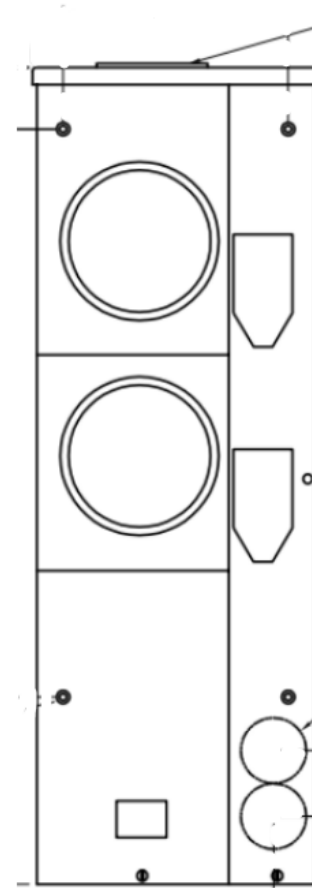
**Side View**



**Front View**



**Front Layout View**



MOUNTING FOR  
2, 2 1/2, 3" C-H  
CONDUIT HUBS

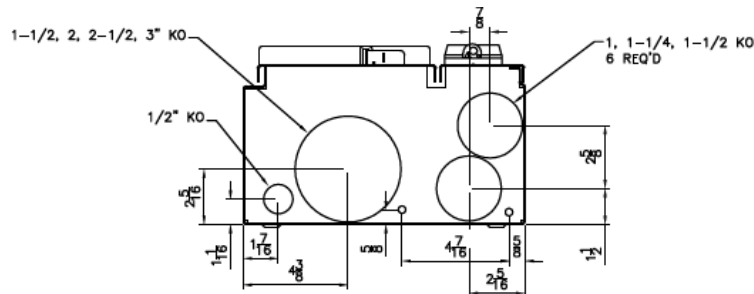
**Notes:**

These are MEG approved units have an additional cotter pin that keeps the meter socket from detaching from the base

Phase/Neutral Wiring Size	(1) #6-300MCM (Cu/Al)
Service Ground Size	(1) #6 - 2/0
Equip Ground Size	(1) #14 - 4

1, 1 1/4, 1 1/2" K.O.  
(6) PLACES

**Top/Bottom View**



imagination at work

MINI MOD III - 200A MAIN LUG ONLY 1PH N3R ENCL  
(2)125A RING SOCKETS TOP/BOTTOM FEED-MEG APPROVED

REF NO	CAT NO	DWG DATE	REV #
96-2282	TMM2212RF	1/8/2015	01