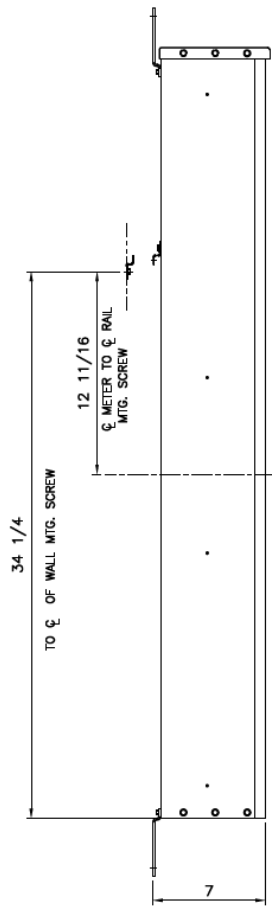
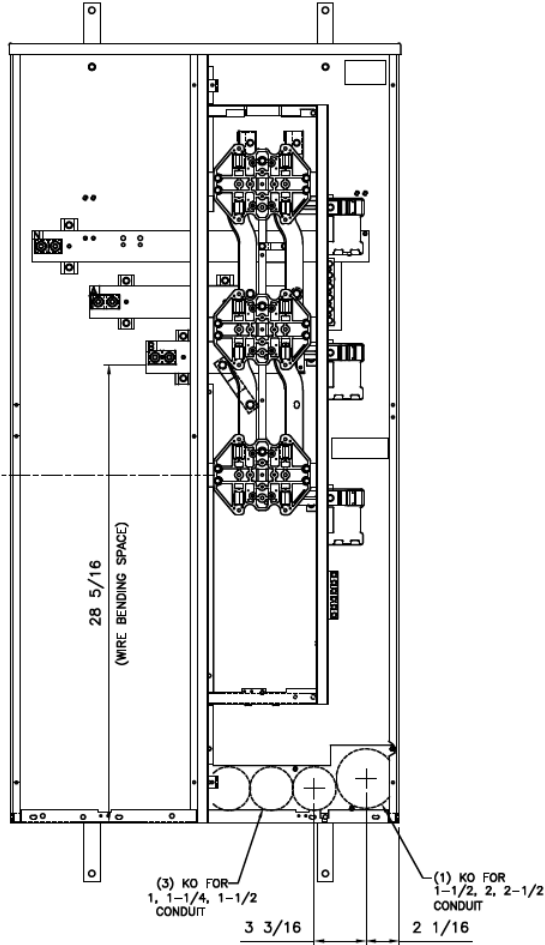


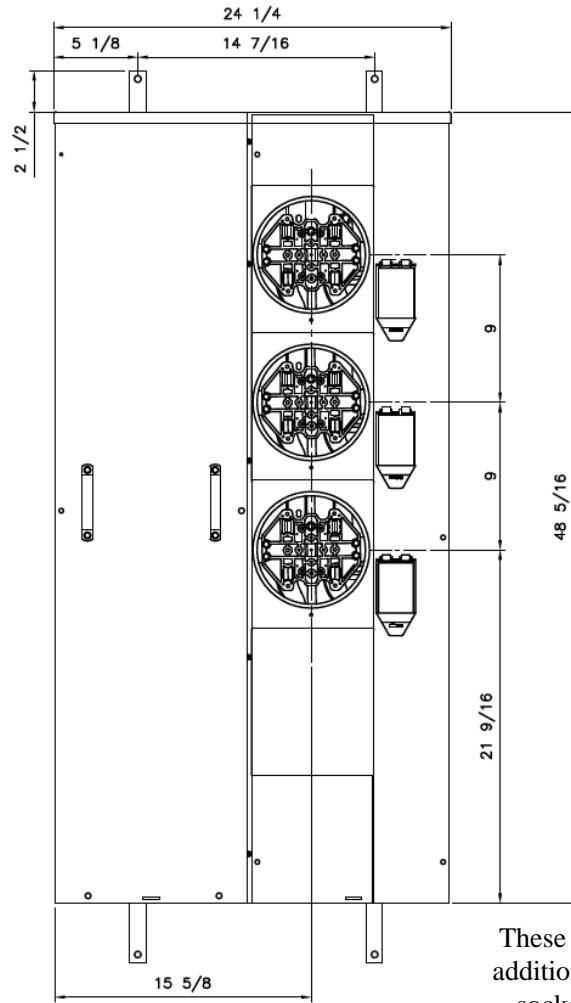
### Side View



### Front View



### Front Layout View

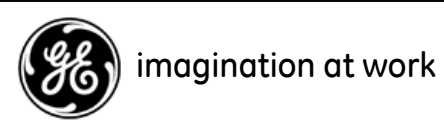
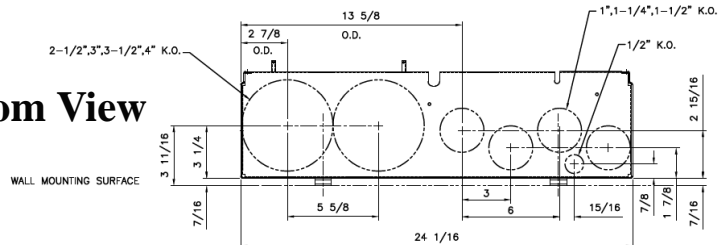


Phase/Neutral Wiring Size	(1) #6-600MCM or (2) 2/0-250MCM
Service Ground Size	(1) #4-300MCM
Equip Ground Size	(1) #14 - 4

**Notes:**

These are MEG approved units have an additional cotter pin that keeps the meter socket from detaching from the base

### Bottom View



MINI MOD III – 400A MAIN LUG ONLY 1PH N3R ENCL  
(3)125A RING SOCKETS BOTTOM FEED – MEG APPROVED

REF NO	CAT NO	DWG DATE	REV #
96-5367	TMM4312RF	1/8/2015	01