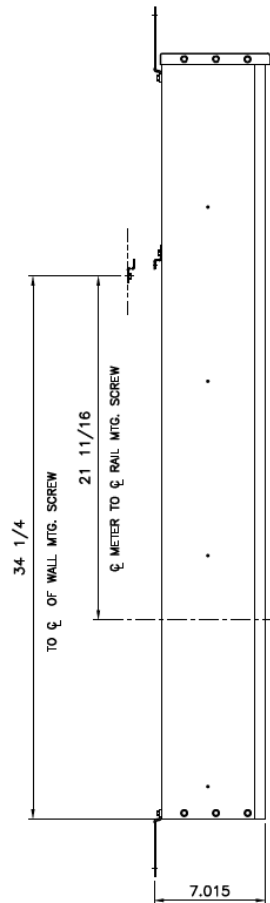
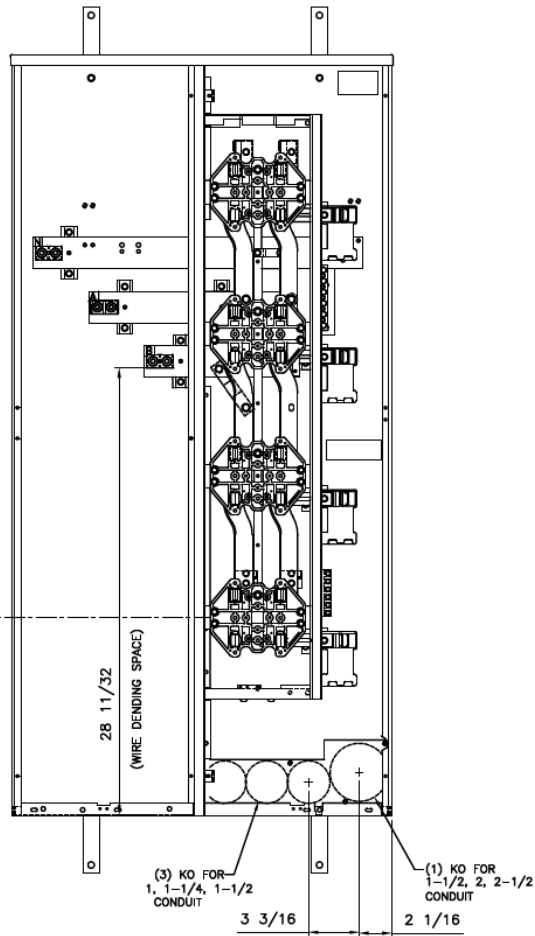


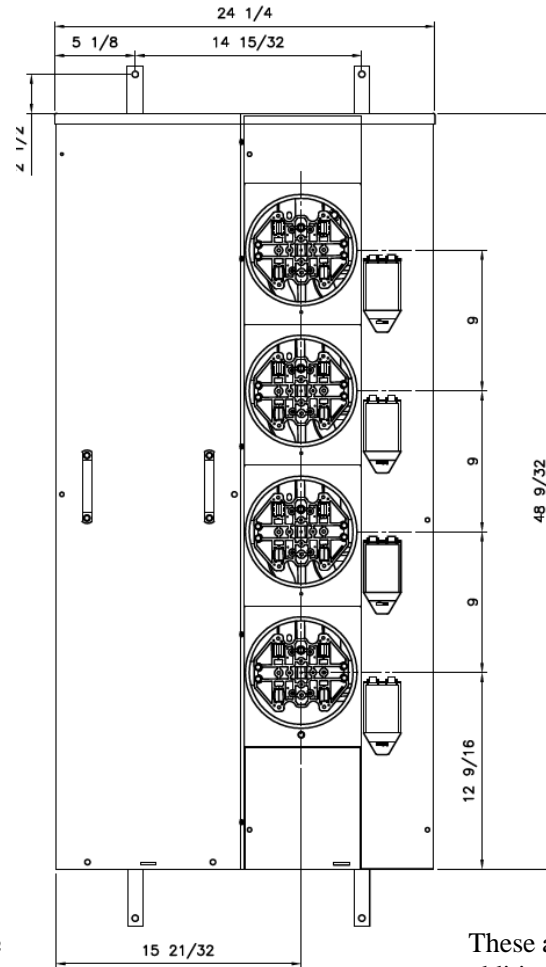
**Side View**



**Front View**



**Front Layout View**

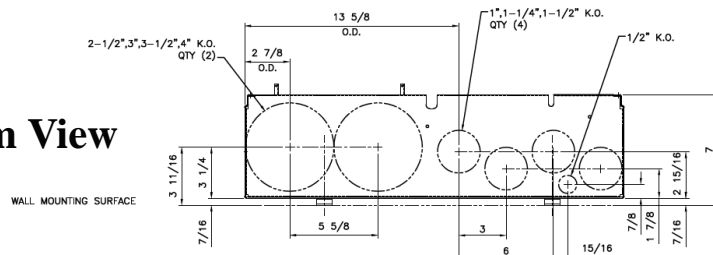


Phase/Neutral Wiring Size	(1) #6-600MCM or (2) 2/0-250MCM
Service Ground Size	(1) #4-300MCM
Equip Ground Size	(1) #14 - 4

**Notes:**

These are MEG approved units have an additional cotter pin that keeps the meter socket from detaching from the base

**Bottom View**



imagination at work

MINI MOD III - 400A MAIN LUG ONLY 1PH N3R ENCL  
(4)125A RING SOCKETS BOTTOM FEED - MEG APPROVED

REF NO	CAT NO	DWG DATE	REV #
96-5368	TMM4412RF	1/8/2015	01