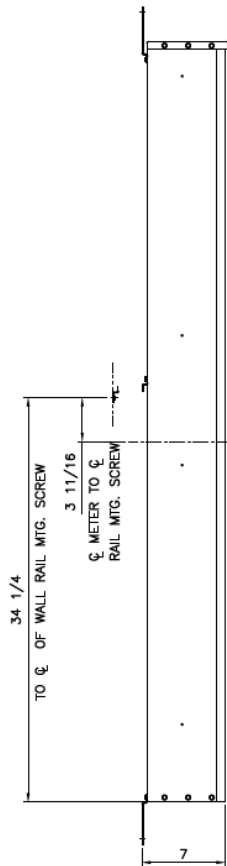
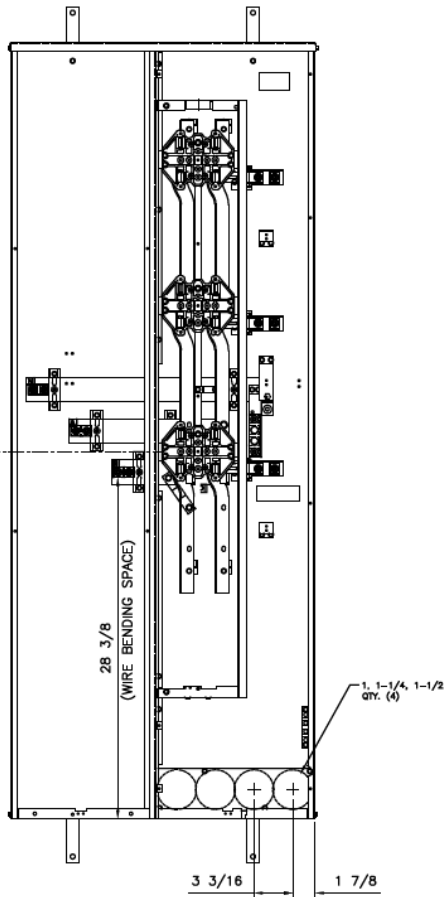


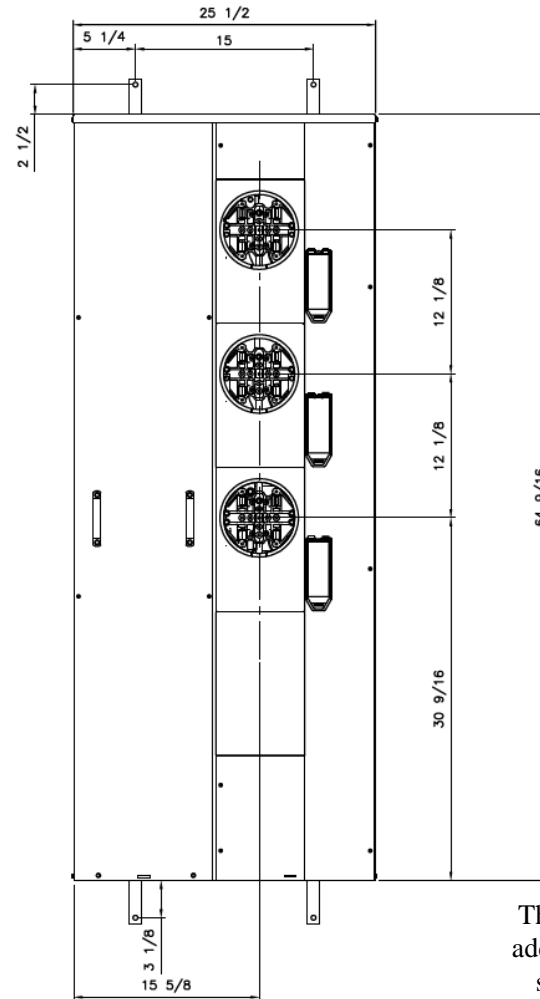
Side View



Front View



Front Layout View

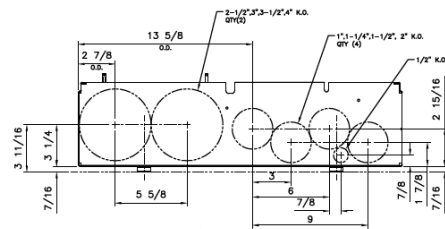


Phase/Neutral Wiring Size	(2) 250-500MCM (AL/CU)
Service Ground Size	(1) #4-300MCM
Equip Ground Size	(1) #14 - 4

Notes:

These are MEG approved units have an additional cotter pin that keeps the meter socket from detaching from the base

Bottom View



imagination at work

MINI MOD III - 600A MAIN LUG ONLY 1PH N3R ENCL
(3)200A RING SOCKETS BOTTOM FEED - MEG APPROVED

REF NO	CAT NO	DWG DATE	REV #
96-5372	TMM6320RF	1/8/2015	01