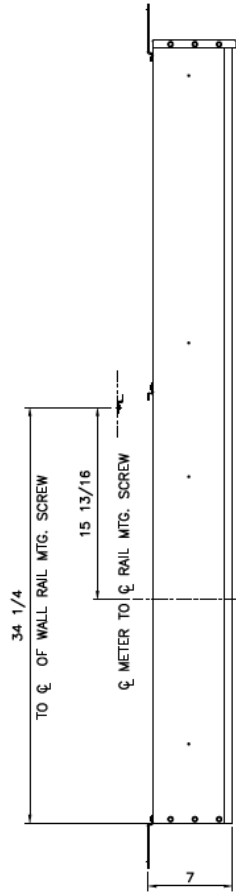
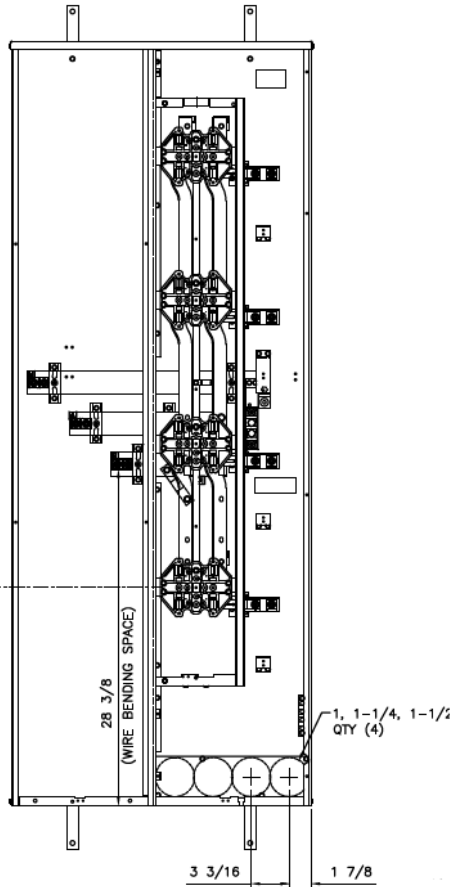


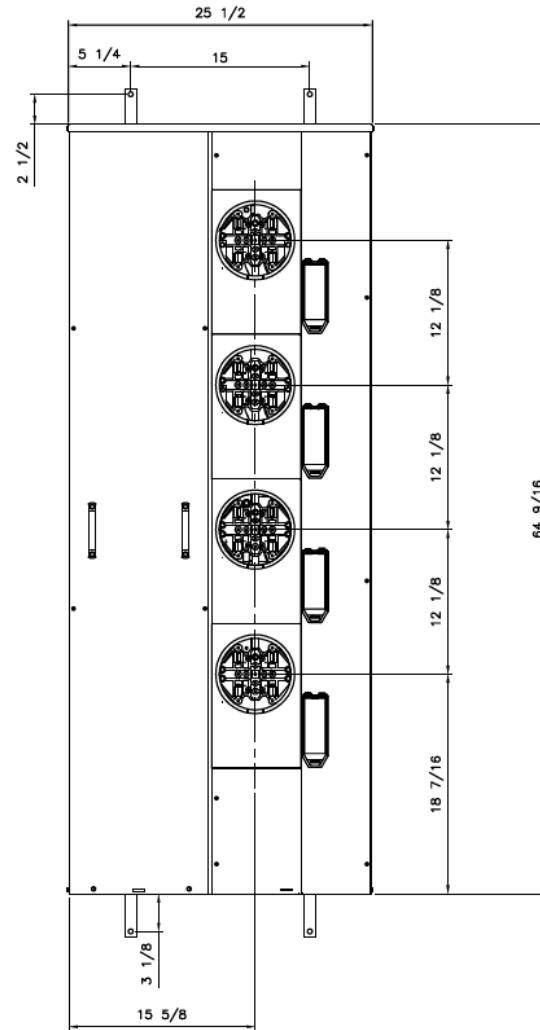
Side View



Front View

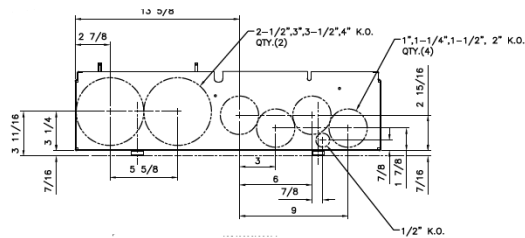


Front Layout View



Phase/Neutral Wiring Size	(2) 250-500MCM (AL/CU)
Service Ground Size	(1) #4-300MCM
Equip Ground Size	(1) #14 - 4

Bottom View



imagination at work

MINI MOD III - 600A MAIN LUG ONLY 1PH N3R ENCL
(4) 200A RING SOCKETS BOTTOM ONLY FEED

REF NO	CAT NO	DWG DATE	REV #
96-5373	TMM6420R	1/8/2015	01