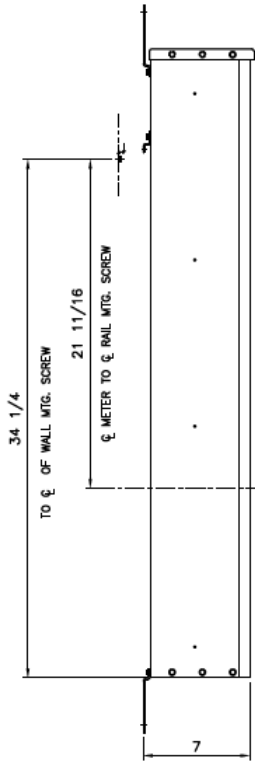
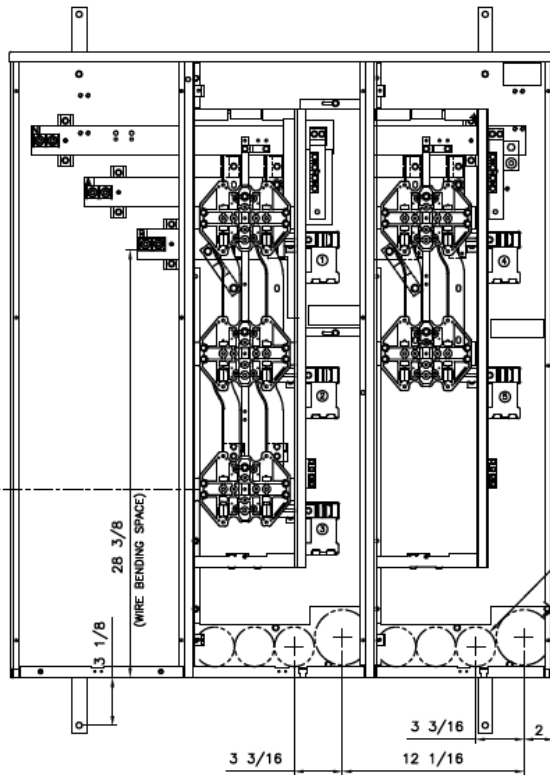


**Side View**



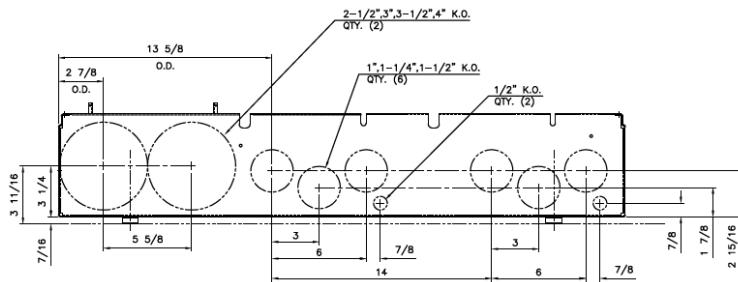
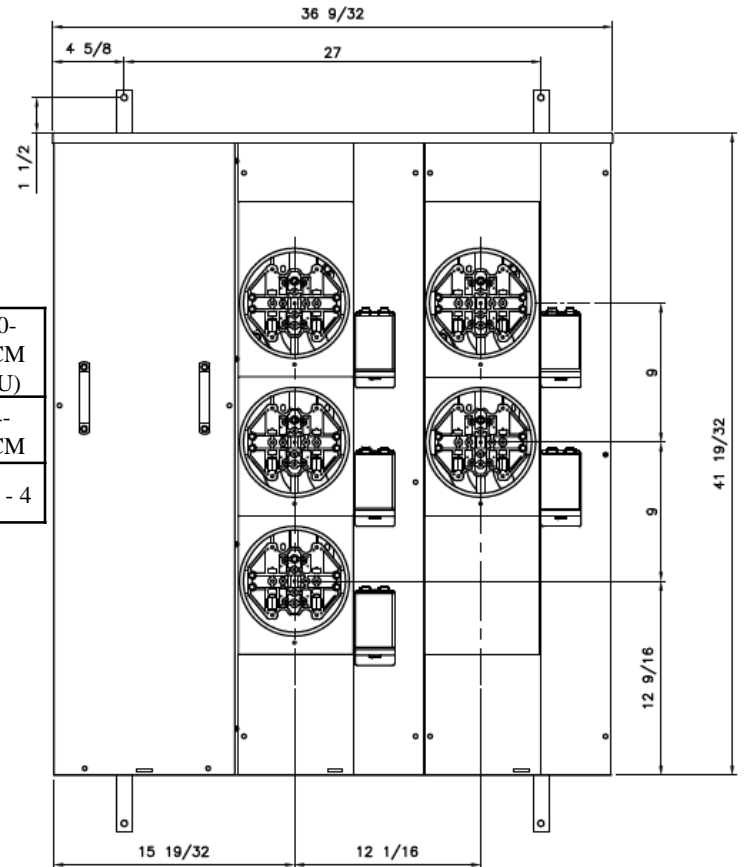
**Front View**



Phase/Neutral Wiring Size	(2) 250-500MCM (AL/CU)
Service Ground Size	(1) #4-300MCM
Equip Ground Size	(1) #14 - 4

1"-1/4", 1-1/2" QTY.(6)  
 1"-1/4", 1-1/2", 2", 2-1/2" QTY.(2)

**Front Layout View**



**Bottom View**

**Notes:**

These are MEG approved units have an additional cotter pin that keeps the meter socket from detaching from the base



imagination at work

MINI MOD III – 600A MAIN LUG ONLY 1PH N3R ENCL  
 (5)125A RING SOCKETS BOTTOM FEED – MEG APPROVED

REF NO	CAT NO	DWG DATE	REV #
96-5369	TMM6512RF	1/8/2015	01