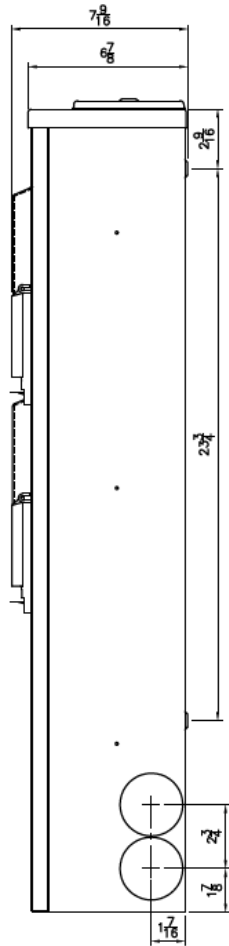
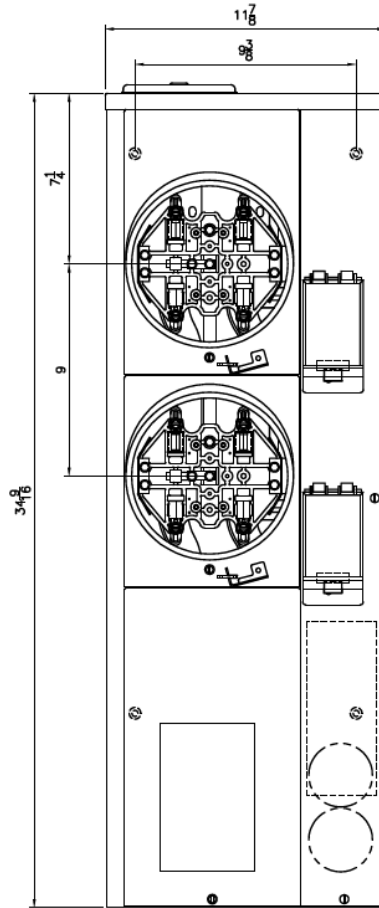


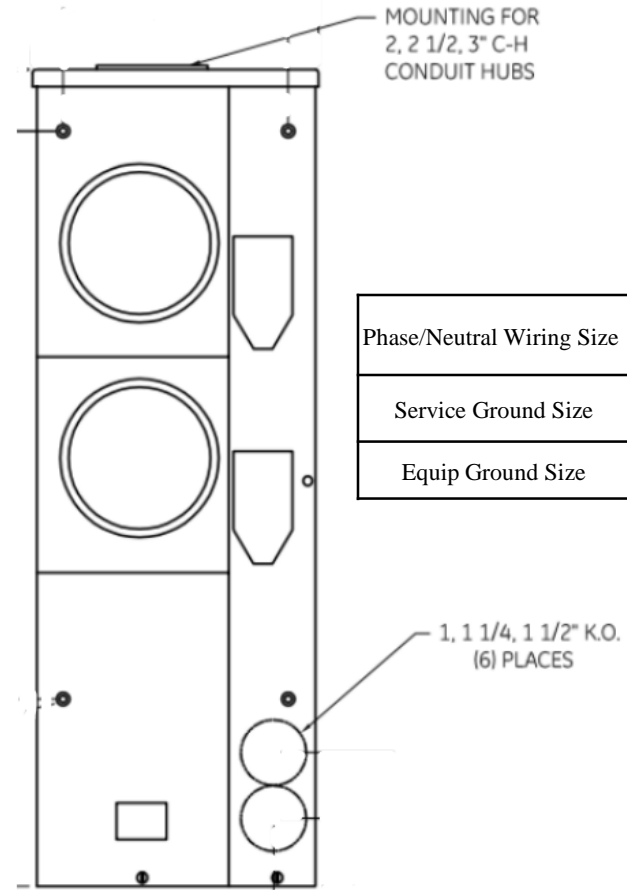
Side View



Front View



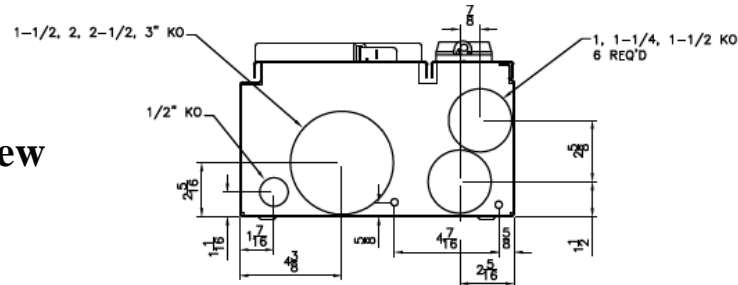
Front Layout View




Phase/Neutral Wiring Size	(1) #6-300MCM (Cu/Al)
Service Ground Size	(1) #6 - 2/0
Equip Ground Size	(1) #14 - 4

1, 1 1/4, 1 1/2" K.O.
(6) PLACES

Top/Bottom View



 **imagination at work**

MINI MOD III - 200A MAIN LUG ONLY 1PH N3R ENCL
(2) 125A RINGLESS SOCKETS TOP/BOTTOM FEED

REF NO	CAT NO	DWG DATE	REV #
96-2282	TMMR2212R	1/8/2015	01