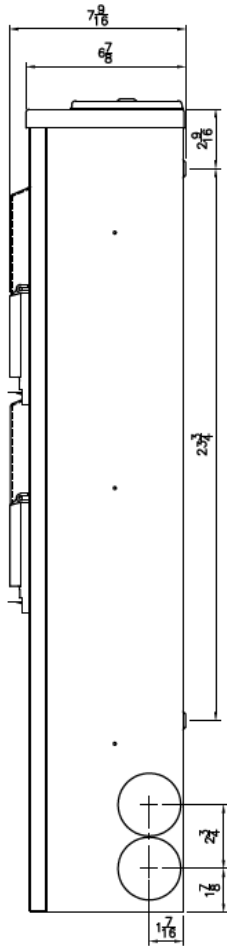
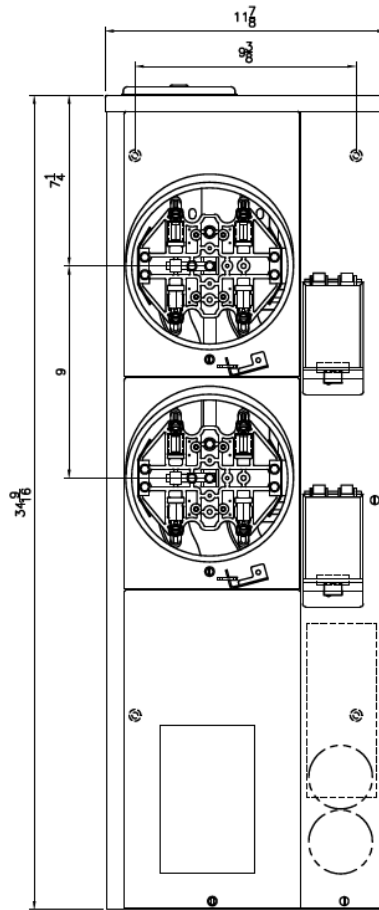


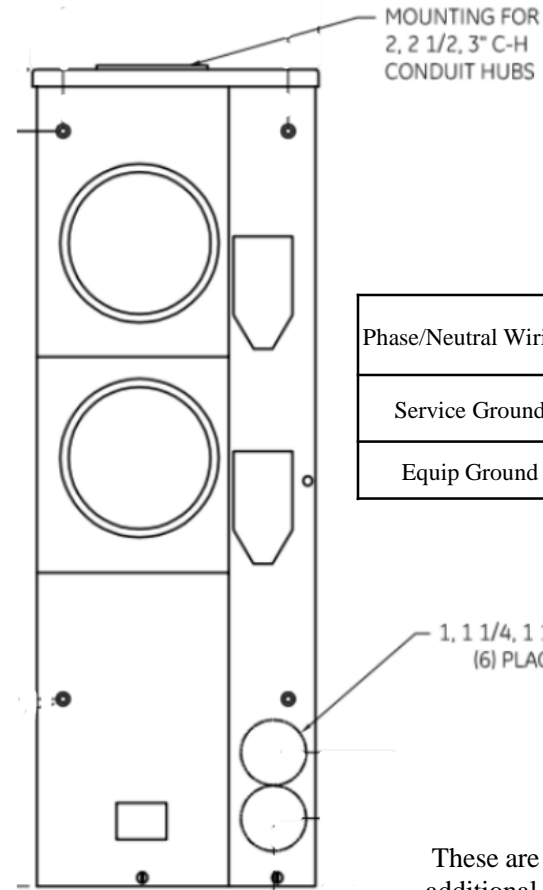
Side View



Front View



Front Layout View

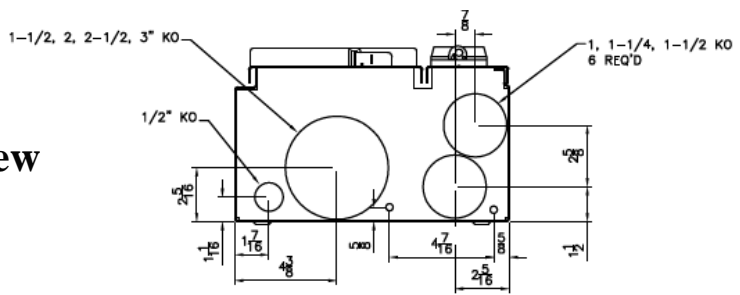



Phase/Neutral Wiring Size	(1) #6-300MCM (Cu/Al)
Service Ground Size	(1) #6 - 2/0
Equip Ground Size	(1) #14 - 4

Notes:

These are MEG approved units have an additional cotter pin that keeps the meter socket from detaching from the base

Top/Bottom View



 **imagination at work**

MINI MOD III - 200A MAIN LUG ONLY 1PH N3R ENCL
 (2)125A RINGLESS SOCKETS TOP/BOTTOM FEED-MEG APPROVED

REF NO	CAT NO	DWG DATE	REV #
96-2282	TMMR2212RF	1/8/2015	01