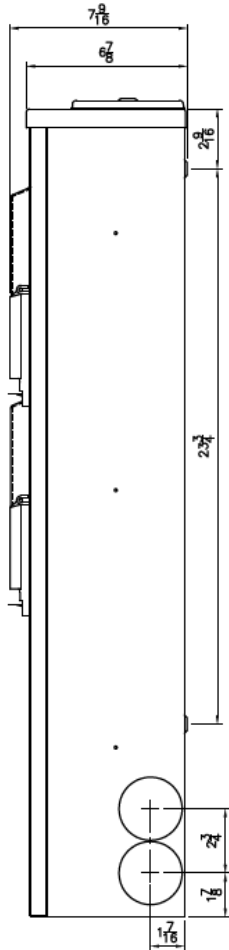
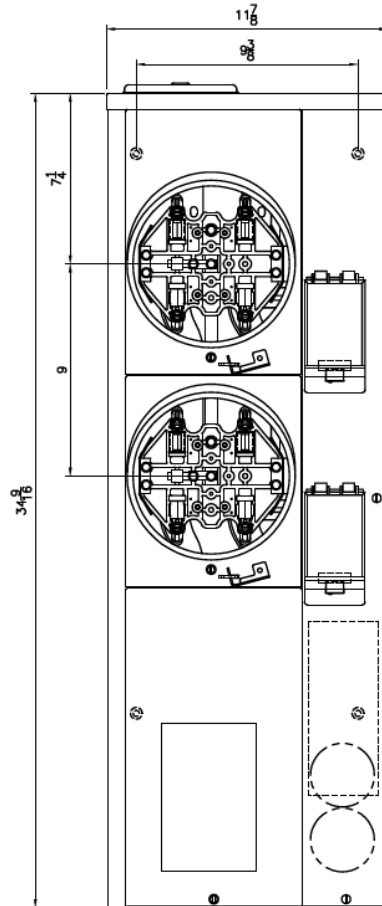


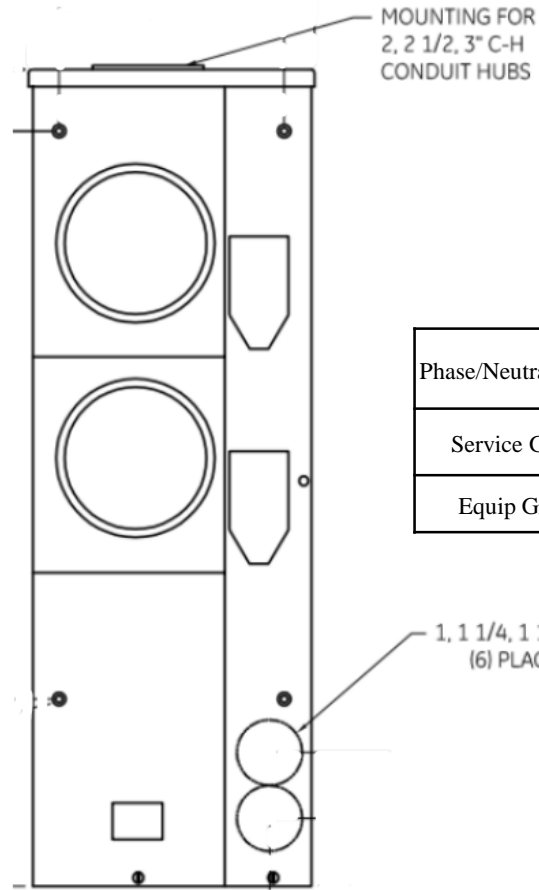
Side View



Front View



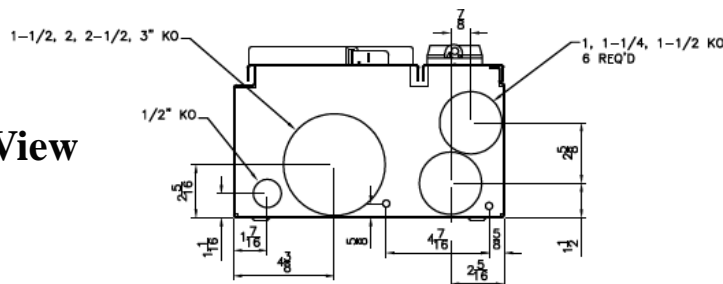
Front Layout View



Phase/Neutral Wiring Size	(1) #6-300MCM (Cu/Al)
Service Ground Size	(1) #6 - 2/0
Equip Ground Size	(1) #14 - 4

This unit has
horned bypass
meters

Top/Bottom View



imagination at work

MINI MOD III - 200A MAIN LUG ONLY 1PH N3R ENCL
(2)125A RINGLESS SOCKETS TOP/BOT FEED HORNED BYPASS

REF NO	CAT NO	DWG DATE	REV #
96-2282	TMMR2212RHB	1/8/2015	01