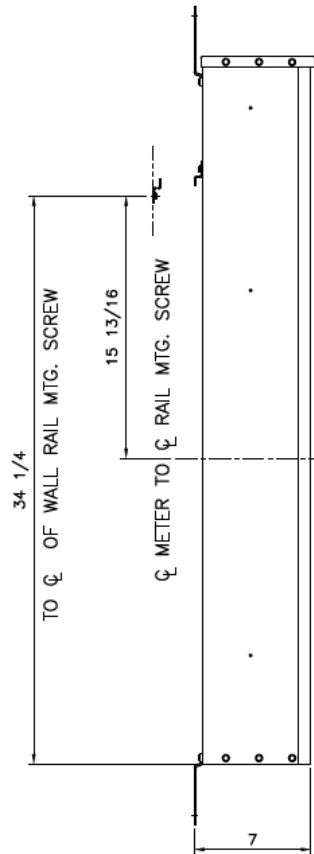
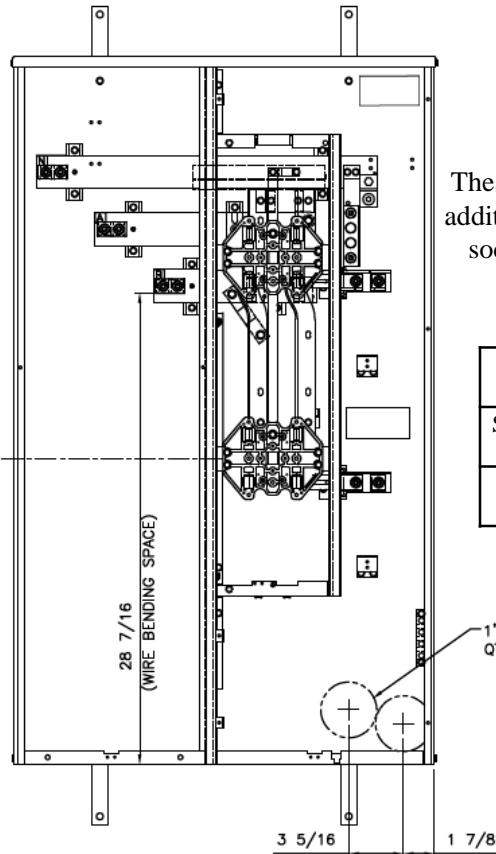


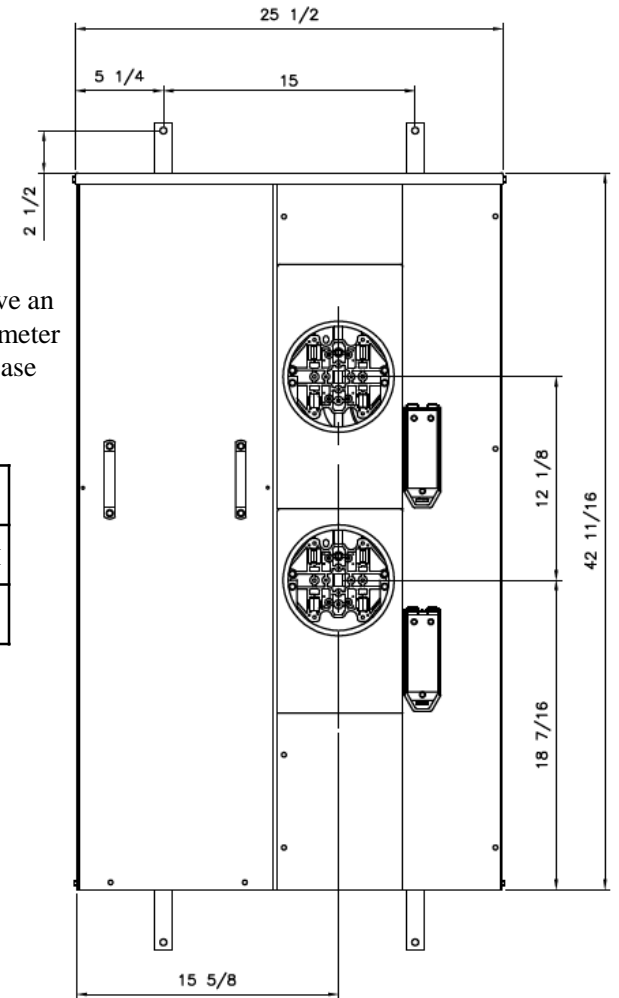
Side View



Front View



Front Layout View



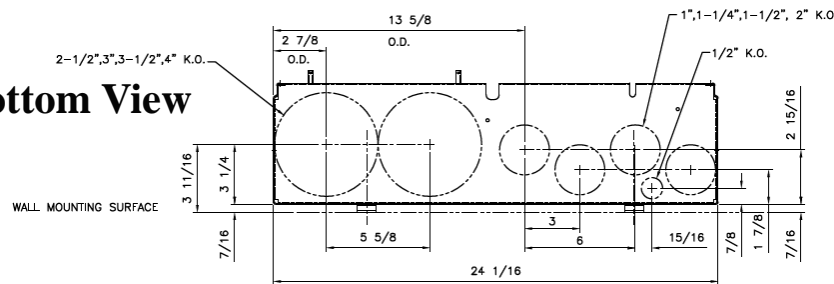
Notes:

These are MEG approved units have an additional cotter pin that keeps the meter socket from detaching from the base

Phase/Neutral Wiring Size	(2) 250-500MCM
Service Ground Size	(1) #4 - 300MCM
Equip Ground Size	(1) #14 - 4

1", 1-1/4", 1-1/2", 2" K.O.
 QTY. (2)

Top/Bottom View



BOTTOM ENDWALL KNOCKOUTS
 1.5 X SCALE



imagination at work

MINI MOD III - 400A MAIN LUG ONLY 1PH N3R ENCL
 (2)200A RINGLESS SOCKETS BOTTOM FEED-MEG APPROVED

REF NO	CAT NO	DWG DATE	REV #
96-5371	TMMR4220RF	1/8/2015	01