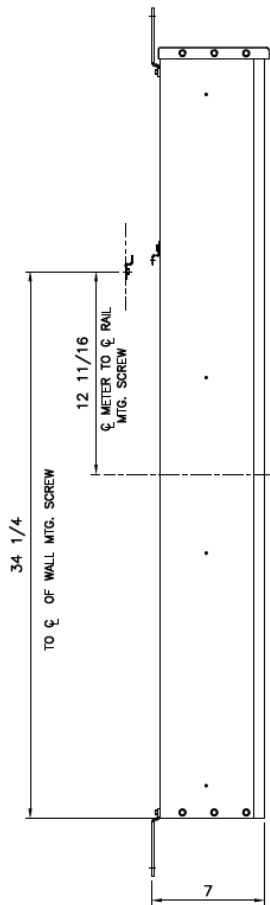
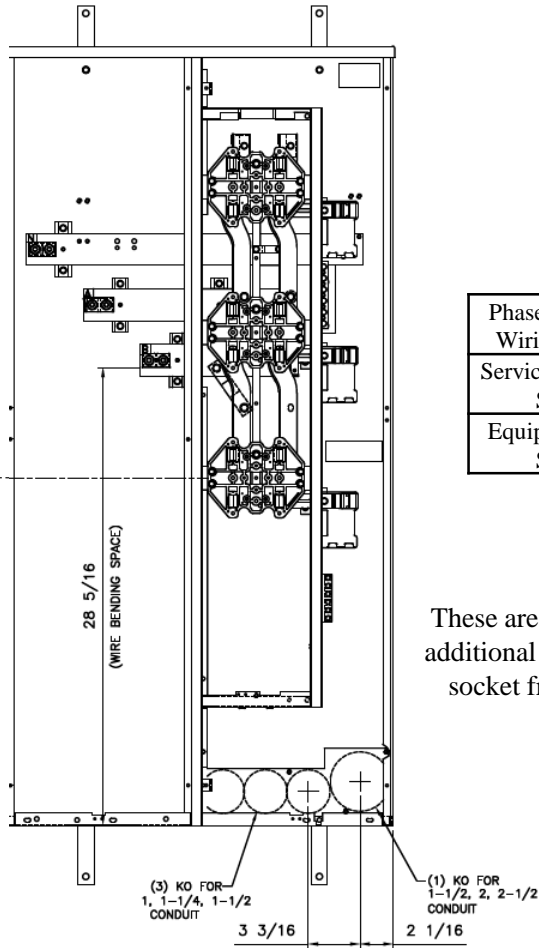


Side View



Front View

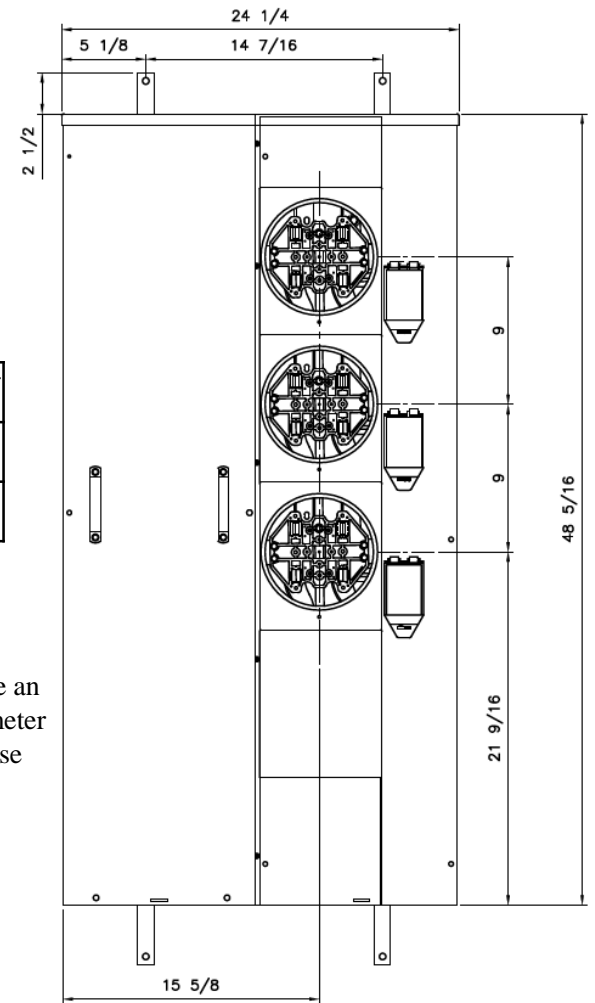


Phase/Neutral Wiring Size	(1) #6-600MCM or (2) 2/0-250MCM
Service Ground Size	(1) #4-300MCM
Equip Ground Size	(1) #14 - 4

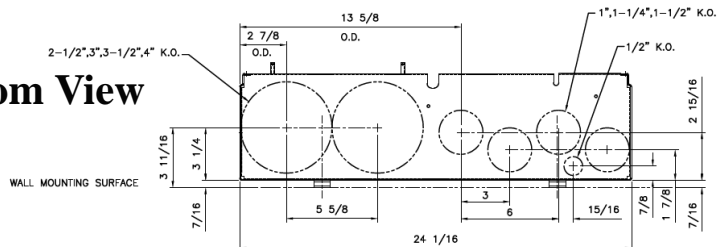
Notes:

These are MEG approved units have an additional cotter pin that keeps the meter socket from detaching from the base

Front Layout View



Bottom View



imagination at work

MINI MOD III - 400A MAIN LUG ONLY 1PH N3R ENCL
(3)125A RINGLESS SOCKETS BOTTOM FEED-MEG APPROVED

REF NO	CAT NO	DWG DATE	REV #
96-5367	TMMR4312RF	1/8/2015	01