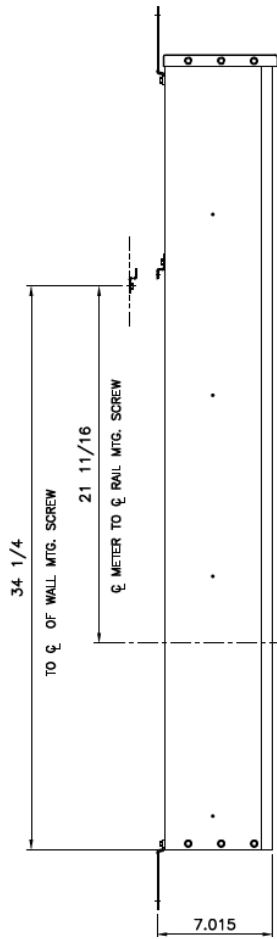
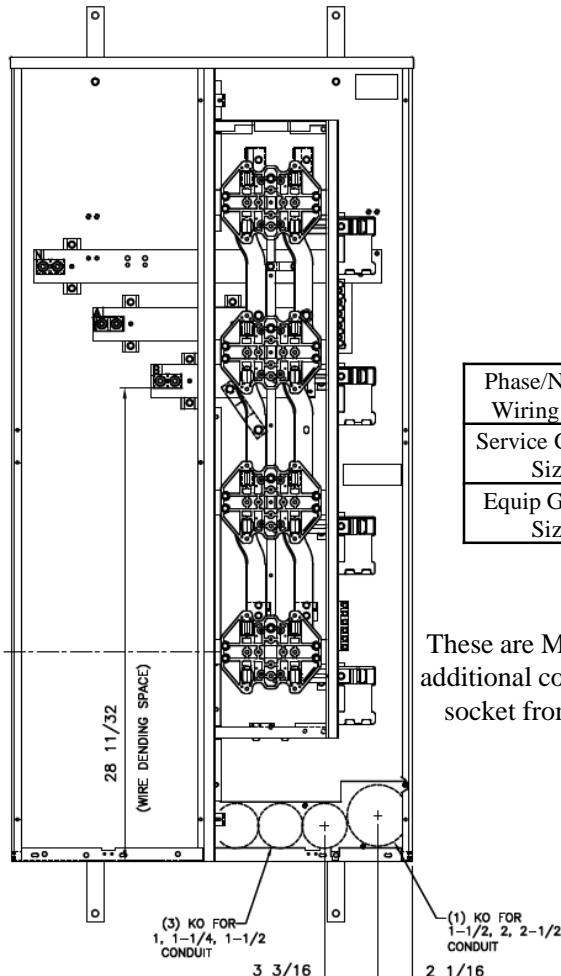


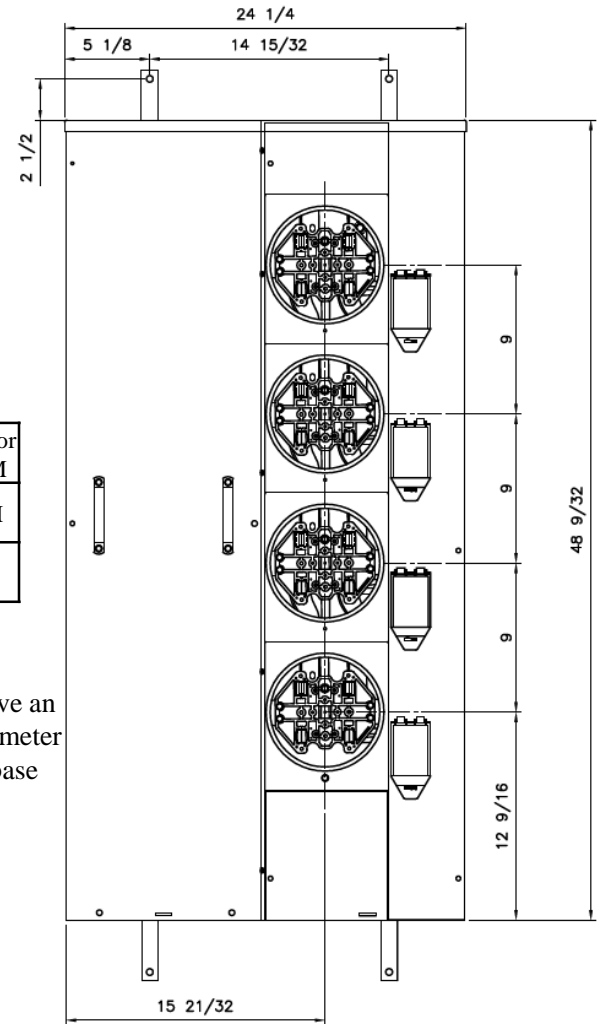
Side View



Front View



Front Layout View

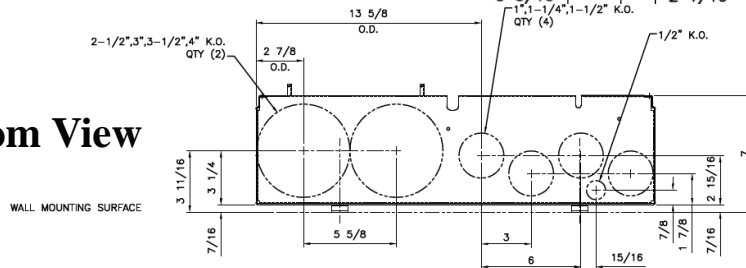


Phase/Neutral Wiring Size	(1) #6-600MCM or (2) 2/0-250MCM
Service Ground Size	(1) #4-300MCM
Equip Ground Size	(1) #14 - 4

Notes:

These are MEG approved units have an additional cotter pin that keeps the meter socket from detaching from the base

Bottom View



imagination at work

MINI MOD III - 400A MAIN LUG ONLY 1PH N3R ENCL
(4)125A RINGLESS SOCKETS BOTTOM FEED-MEG APPROVED

REF NO	CAT NO	DWG DATE	REV #
96-5368	TMMR4412RF	1/8/2015	01