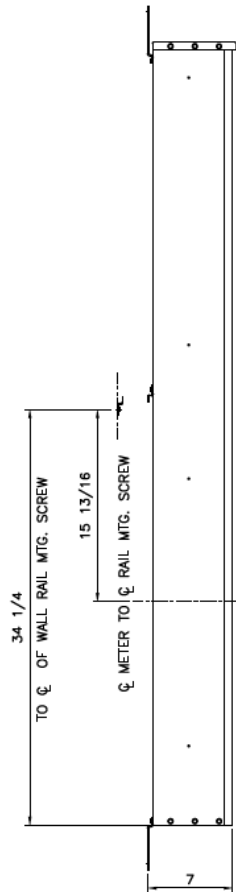
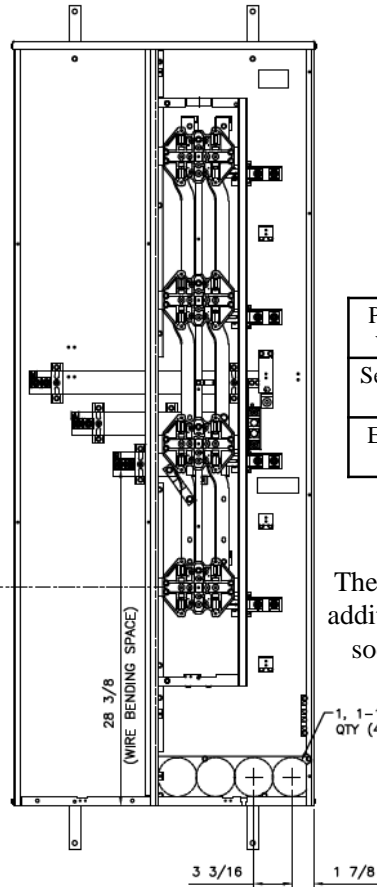


Side View



Front View

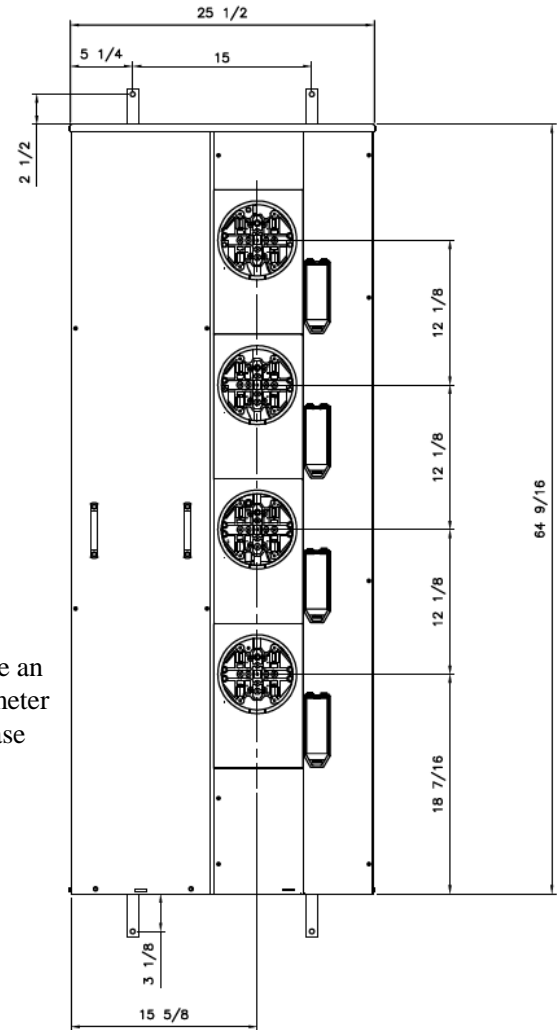


Phase/Neutral Wiring Size	(2) 250-500MCM
Service Ground Size	(1) #4-300MCM
Equip Ground Size	(1) #14 - 4

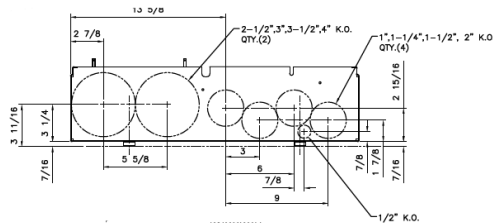
Notes:

These are MEG approved units have an additional cotter pin that keeps the meter socket from detaching from the base

Front Layout View



Bottom View



imagination at work

MINI MOD III – 600A MAIN LUG ONLY 1PH N3R ENCL
(4)200A RINGLESS SOCKETS BOTTOM FEED – MEG APPROVED

REF NO	CAT NO	DWG DATE	REV #
96-5373	TMMR6420RF	1/8/2015	01