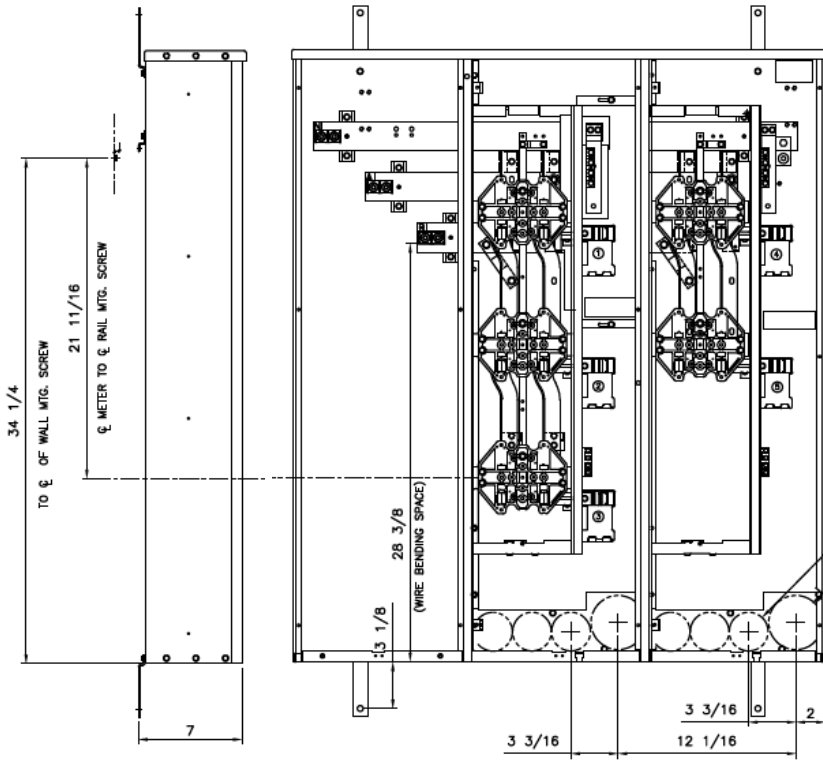


Side View

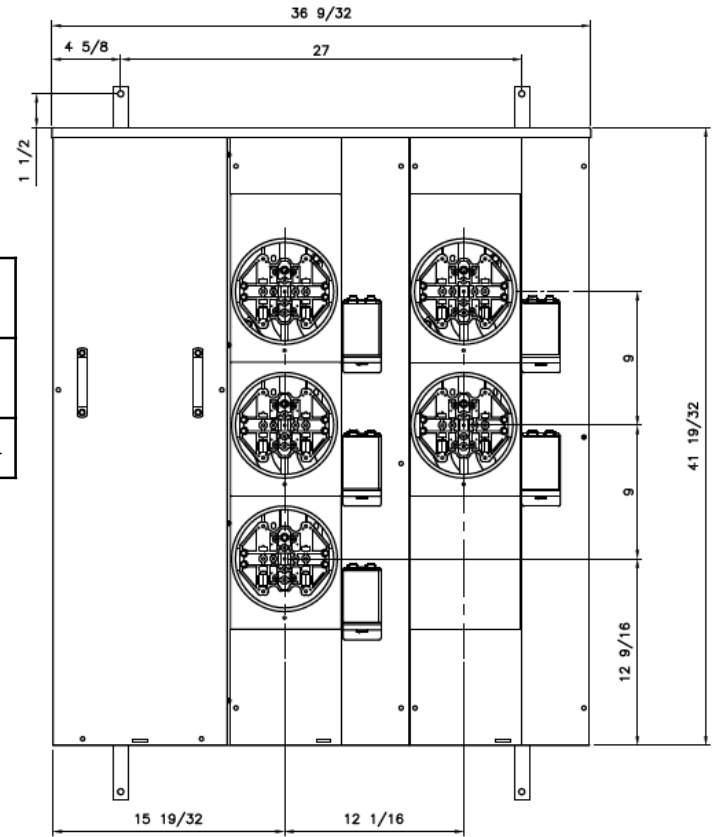
Front View

Front Layout View



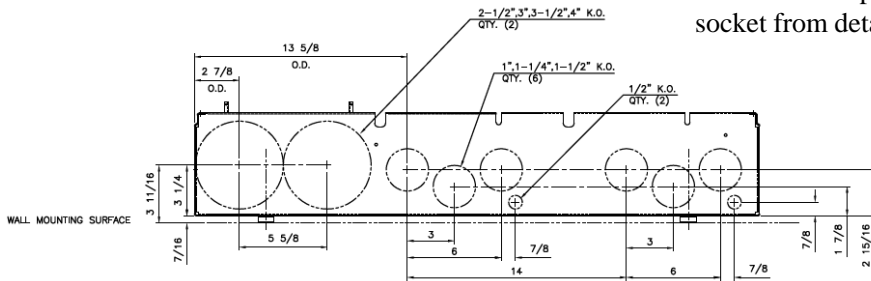
Phase/Neutral Wiring Size	(2) 250-500MCM
Service Ground Size	(1) #4-300MCM
Equip Ground Size	(1) #14 - 4

1" - 1/4", 1-1/2" QTY.(6)
 1" - 1/4", 1-1/2", 2", 2-1/2" QTY.(2)



Notes:

These are MEG approved units have an additional cotter pin that keeps the meter socket from detaching from the base



Bottom View



imagination at work

MINI MOD III - 600A MAIN LUG ONLY 1PH N3R ENCL
 (5)125A RINGLESS SOCKETS BOTTOM FEED-MEG APPROVED

REF NO	CAT NO	DWG DATE	REV #
96-5369	TMMR6512RF	1/8/2015	01