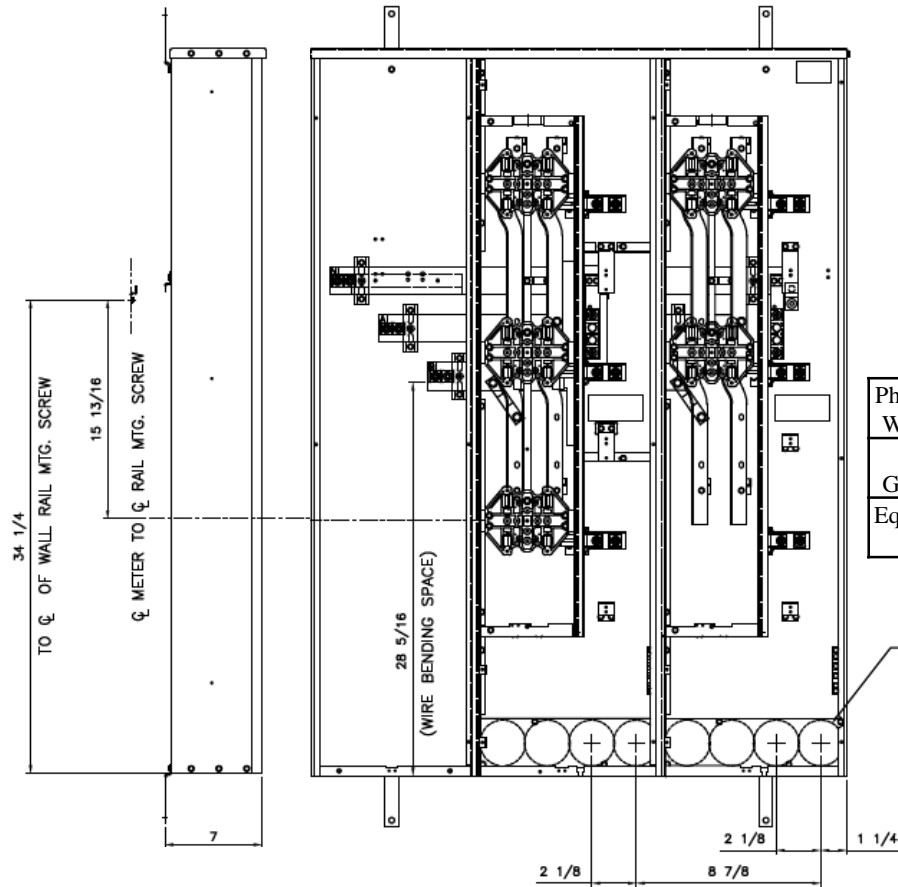


Side View

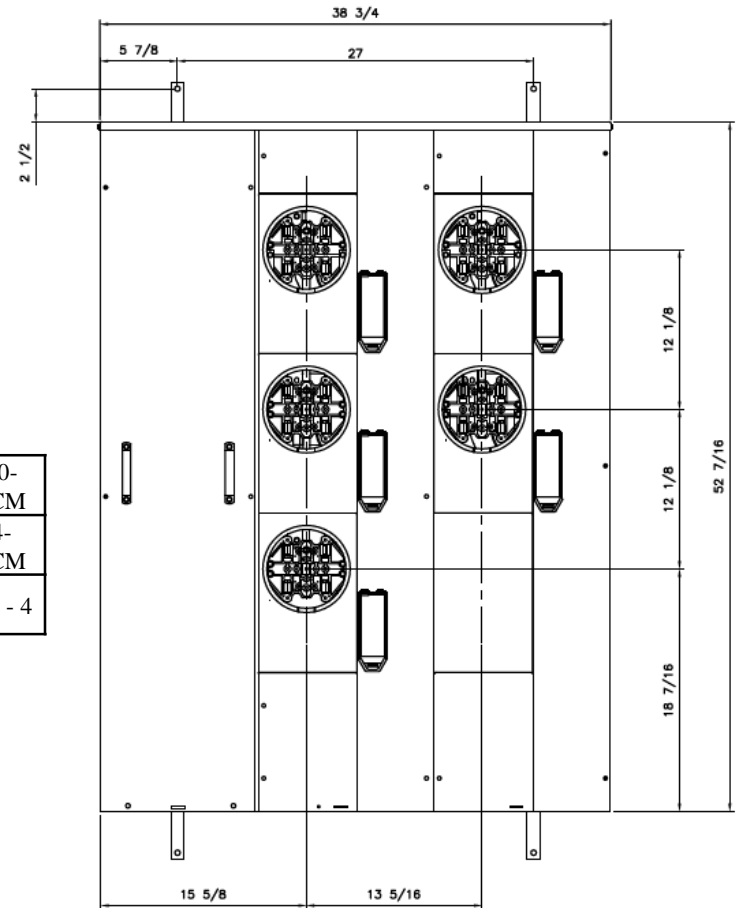
Front View

Front Layout View



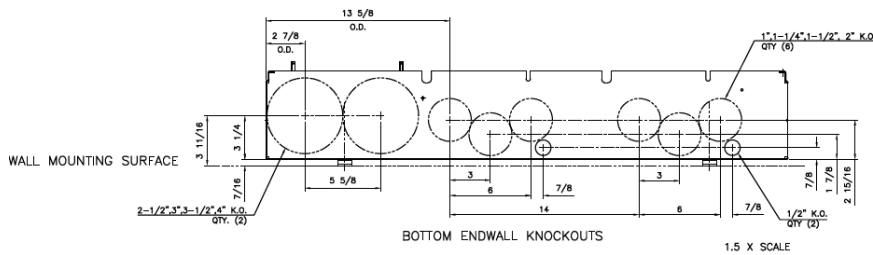
Phase/Neutral Wiring Size	(2) 250-500MCM
Service Ground Size	(1) #4-300MCM
Equip Ground Size	(1) #14 - 4

$1 \frac{1}{4}, 1 \frac{1}{4}, 1 \frac{1}{2}, 2 \frac{1}{8}$
 QTY.(8)



Notes:

These are MEG approved units have an additional cotter pin that keeps the meter socket from detaching from the base



Bottom View



imagination at work

MINI MOD III – 600A MAIN LUG ONLY 1PH N3R ENCL
 (5) 200A RINGLESS SOCKETS BOTTOM FEED – MEG APPROVED

REF NO	CAT NO	DWG DATE	REV #
96-5374	TMMR6520RF	1/8/2015	01