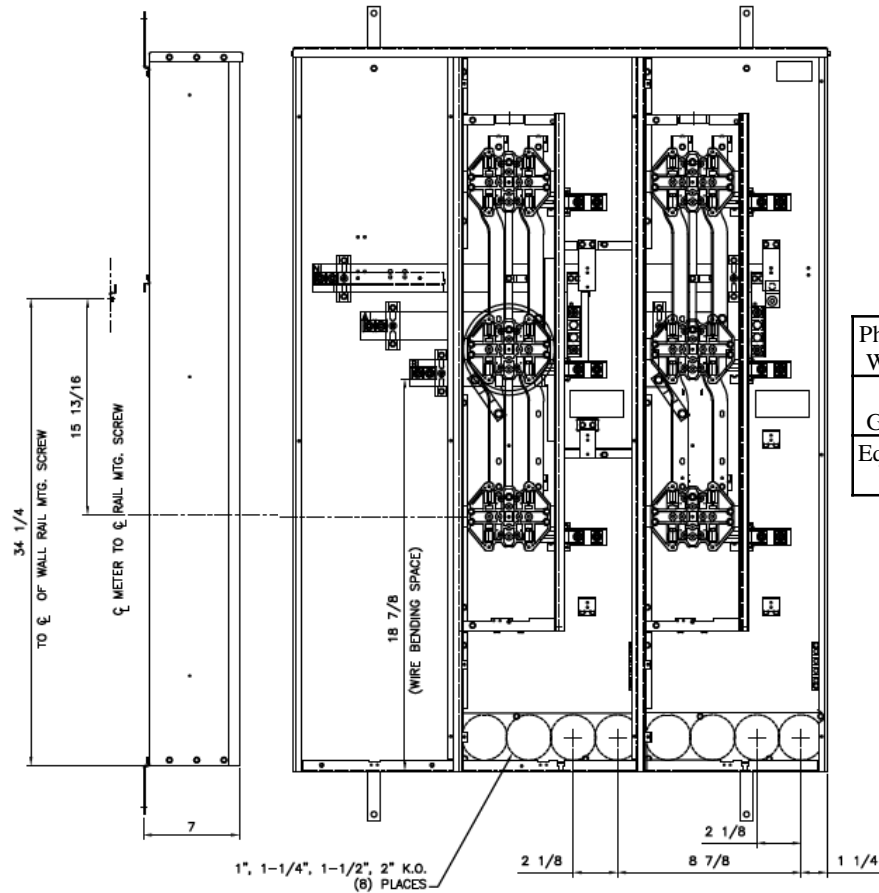


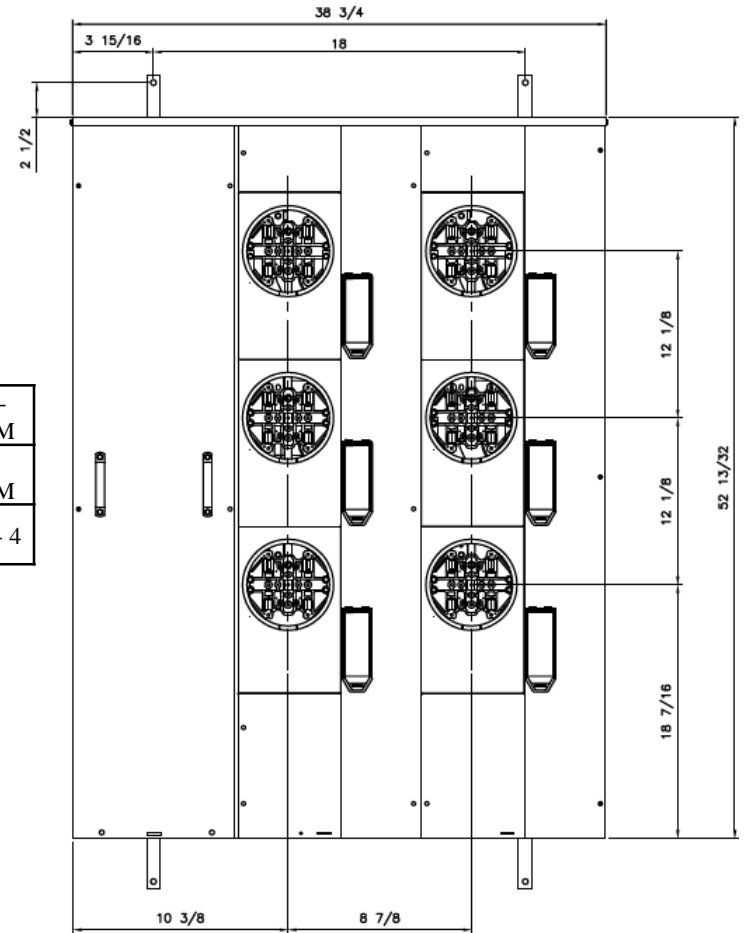
Side View

Front View

Front Layout View

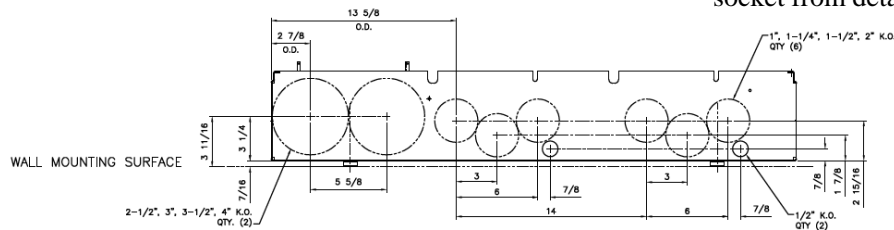


Phase/Neutral Wiring Size	(2) 250-500MCM
Service Ground Size	(1) #4-300MCM
Equip Ground Size	(1) #14 - 4



Notes:

These are MEG approved units have an additional cotter pin that keeps the meter socket from detaching from the base



Bottom View



imagination at work

MINI MOD III - 600A MAIN LUG ONLY 1PH N3R ENCL
(6)200A RINGLESS SOCKETS BOTTOM FEED-MEG APPROVED

REF NO	CAT NO	DWG DATE	REV #
96-5375	TMMR6620RF	1/8/2015	01