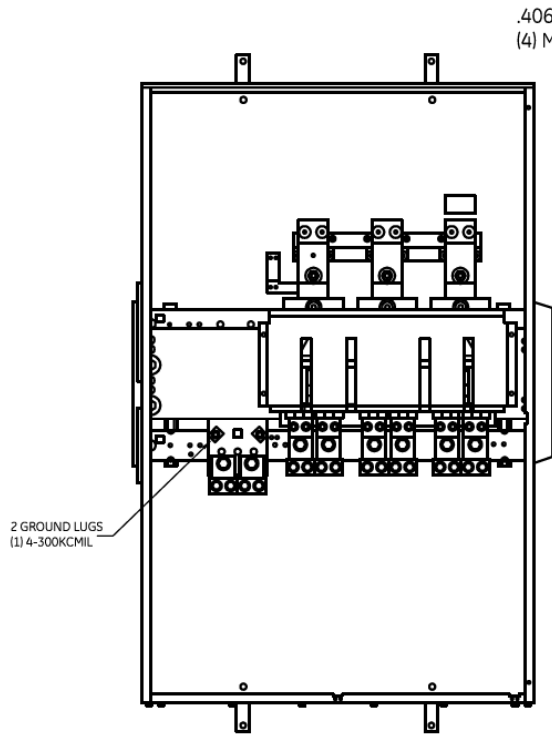
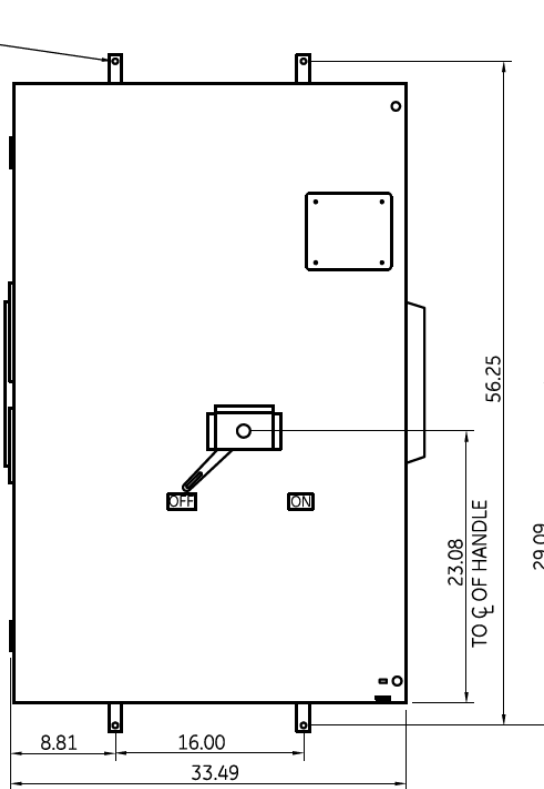


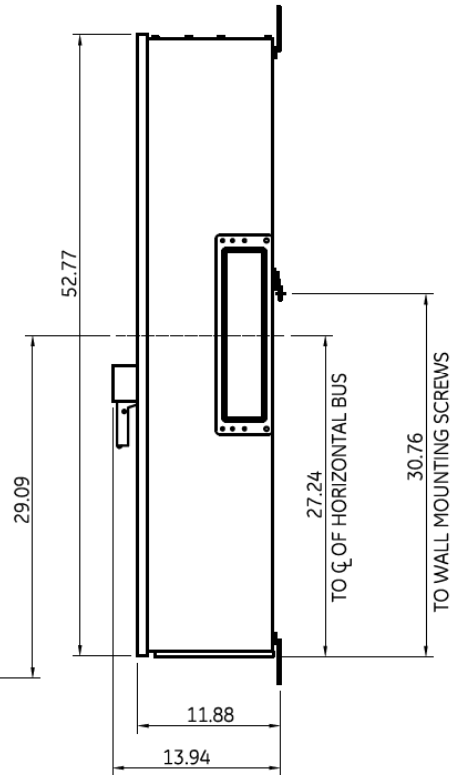
**Front View**



**Front Layout View**



**Side View**

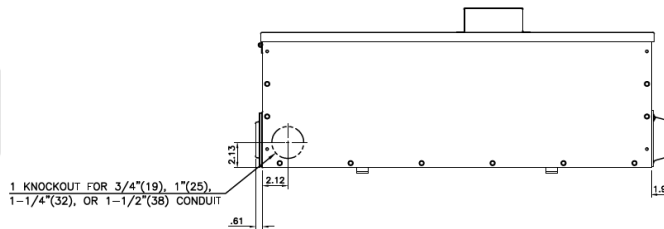


This unit uses a standard/disconnect style fusible switch. This unit uses only T fuses

**Incoming Cable Sizes:**

(4) #2-500MCM per Ph/Neutral (AL/CU)

	(4) 500 KCMIL	(3) 750 KCMIL
WIRE BENDING - PHASE	20.70	21.06
WIRE BENDING - NEUTRAL	17.68	19.06



**Bottom View**



imagination at work

METER MOD III-1200A MAIN FUSIBLE SWITCH N3R ENCL  
100KAIC 3PH 4W 208Y/120V BOTTOM ONLY FEED

REF NO	CAT NO	DWG DATE	REV #
96-3831	TMP3FB12RT	1/8/2015	01