

MAIN SWITCH MODULE

CATALOG NO. TMP3FT8R, TMP3FT8RWC
 TYPE 3R ENCLOSURE - RAINPROOF - 800AMP.
 120/240V AC 1 PHASE-3 WIRE
 208Y/240V AC 3 PHASE-4 WIRE
 240/120V AC 3 PHASE-4 WIRE

For use with TMP or TMPR meter modules and TMP main lug modules. Continuous load current not to exceed 80% of the rating of fuses employed in other than motor circuits.

REPLACEMENT PARTS		TORQUE MAIN BUS JOINT BOLTS 300 LB-INS	
End Cap - Right (Deep)	TMECR	Suitable only for top feed. Order rainproof hubs from table below.	
End Cap - Left (Flat)	TMECL		
Switch Assembly (Complete)	TMP3FTS8	Conduit Size	Cat.No.
Front Cover	TMFC2	1/2	343L647G3
Drip Hood	TMDH9	3/4	343L647G4
Handle	TMPFH1	1	343L647G5
Hardware Kit	TMPMSK1	1-1/4	343L647G6
Shroud	TMPSH1	1-1/2	343L647G7
SUITABLE FOR USE AS SERVICE EQUIPMENT		2	343L647G8
		2-1/2	343L647G9
USE COPPER OR ALUMINUM WIRE USE 75°C WIRE		3	343L647G10
		3-1/2	343L647G11
		4	343L647G12

LUG SPECIFICATIONS

Function	Wire Size		Torque, Lb.-Ins.
	CU-AL	AWG/MCM	
Line Terminals	(4)	3/0-750	375
Neutral Terminal	(4)	3/0-750	375
Grounding Terminal		4-300	250

SHORT CIRCUIT CURRENT RATING
 This module is U.L. listed for use on circuits delivering not more than 100,000 RMS symmetrical amperes at 240 volts maximum when Class (T or L) fuses are installed. The short circuit rating is limited to the lowest marked short circuit rating of the TMP or TMPR meter module or TMP main lug module.

FUSE INSTALLATION

This switch may use Class (T or L) fuses.

• CLASS T FUSE INSTALLATION •

Class T fuses are installed flatwise as shown in Figure 1. Use 1/2 inch bolts and washers provided, discard 1/2 inch nuts. Torque 1/2 inch bolts to 28-31 lb.-ft.



FIGURE 1

1/4-20 CONNECTOR (MOUNTING SCREWS INSTALLED IN LOWER SET OF BUS BAR MOUNTING HOLES)

• CONVERSION TO ACCEPT CLASS L FUSES •

Remove lower fuse connectors, rotate 180° and reinstall into lower set of bus bar mounting holes (using right set of holes in fuse connector) as shown in Figure 2. (Note: 1/4-20 connector mounting screws are self threading.) Torque 1/4-20 connector mounting screws to 80-90 lb-ins.

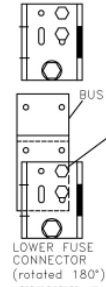


FIGURE 2

• CLASS L FUSE INSTALLATION •

Class L fuses are installed onto inside of left flange of fuse connector as shown in Figure 3. Use 1/2 inch bolts, nuts, and lockwashers provided. Torque 1/2 inch nuts to 40-45 lb-ft.

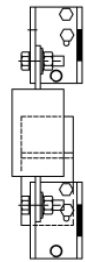


FIGURE 3