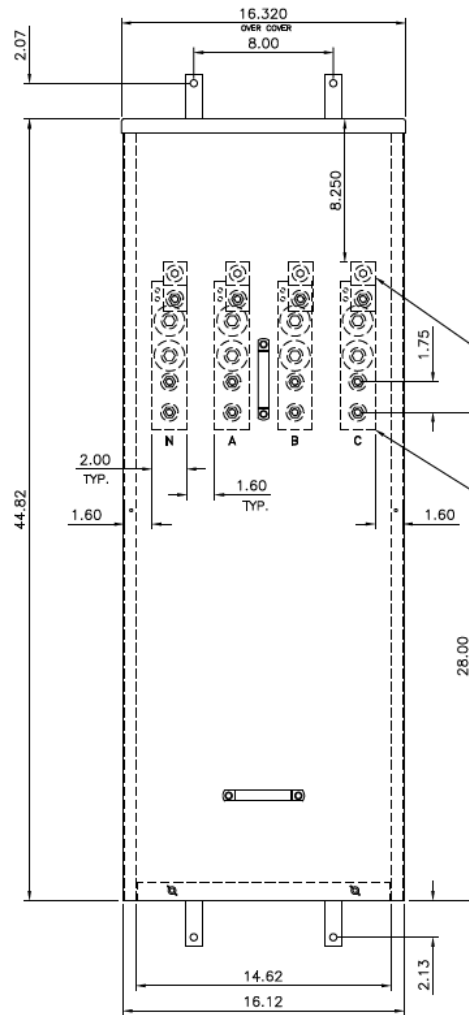
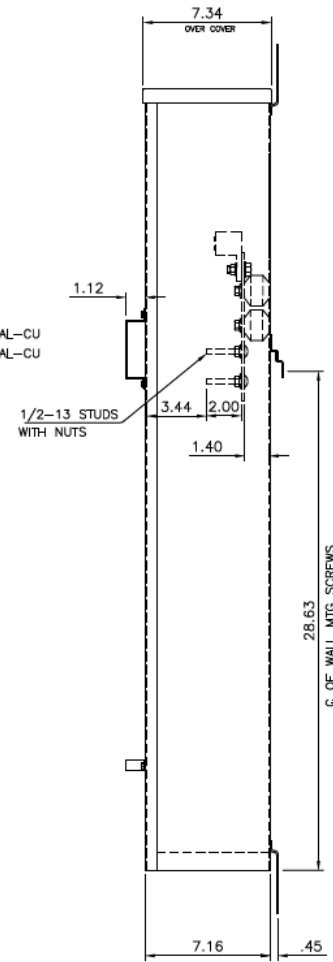


Front View



Side View

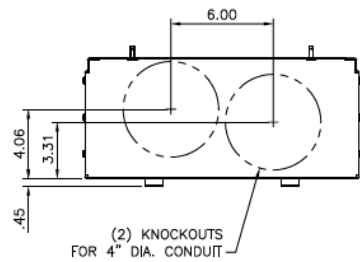


LUG WIRE RANGE -
 (1) 750MCM - 1/0 AL-CU
 (2) 300MCM - 1/0 AL-CU
 PER PHASE

"C" PHASE OMITTED
 FOR SINGLE
 PHASE DEVICE.

- Incoming Cable Sizes:**
- (1) 1/0-750MCM/ Phase (AL/CU)
 - or-
 - (2) 1/0-300MCM/Phase (AL/CU)

 - (1) 1/0-750MCM/Neutral (AL/CU)
 - or-
 - (2) 1/0-300MCM/Neutral (AL/CU)



Bottom View



imagination at work

METER MOD III-400A MAIN PULL BOX SECT N3R ENCL
 100KAIC 3PH 4W 208Y/120V TOP/BOTTOM FEED

REF NO	CAT NO	DWG DATE	REV #
96-1955	TMP3U4R	1/8/2015	01