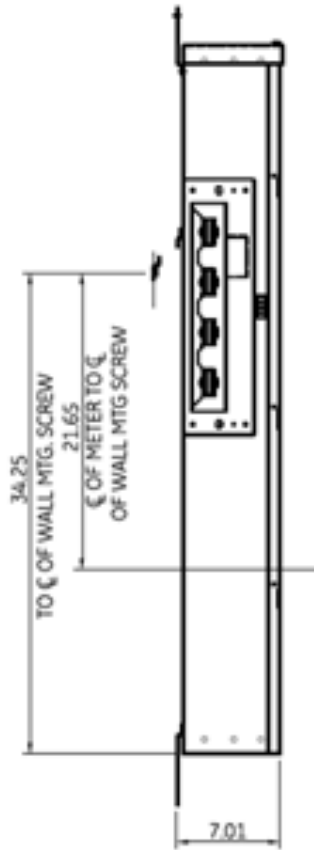
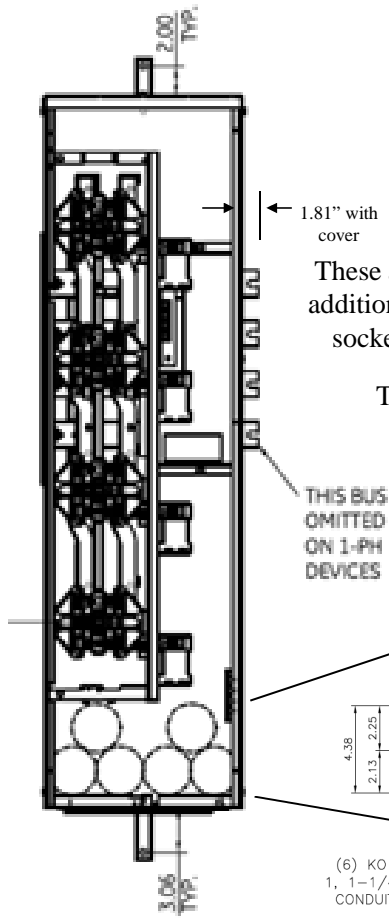


**Side View**



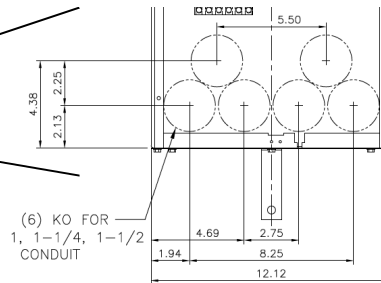
**Front View**



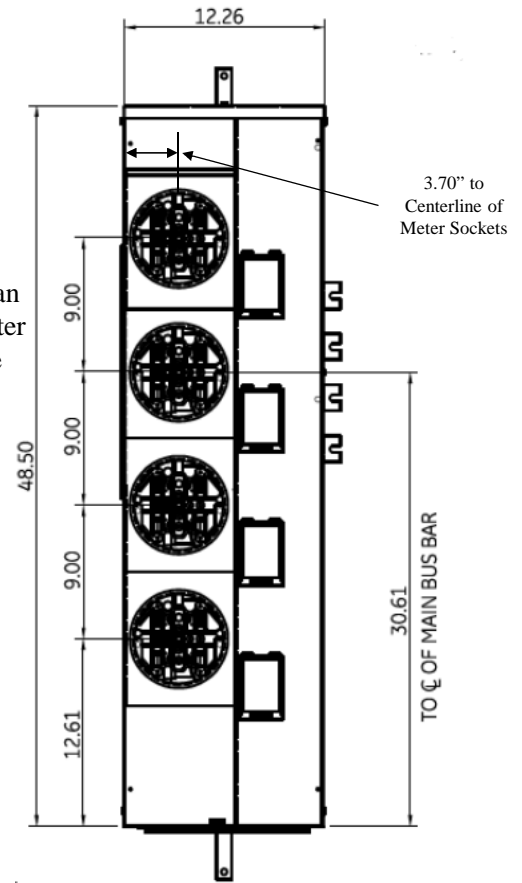
**Notes:**

These are MEG approved units have an additional cotter pin that keeps the meter socket from detaching from the base

Top view has blank end walls (no knockouts)



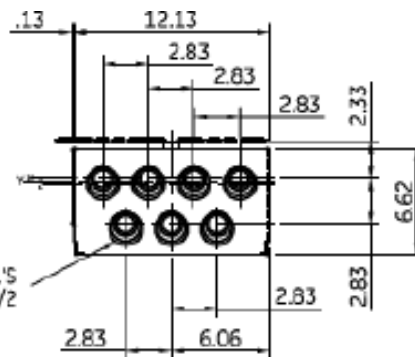
**Front Layout View**



**Bottom View**

Z =  $\phi$  OF 1-1/2" RING  
 Y =  $\phi$  OF 1-1/4" RING  
 X =  $\phi$  OF 3/4" & 1" RING

TANGENTIAL K.O.'S  
 3/4, 1, 1-1/4, 1-1/2



imagination at work

METER MOD III - 1PH 800A HORIZONTAL BUSSING  
 (4)125A RING SOCKETS-N3R ENCLOSURE-MEG APPROVED

REF NO	CAT NO	DWG DATE	REV #
96-4356	TMP8412RF	1/8/2015	01