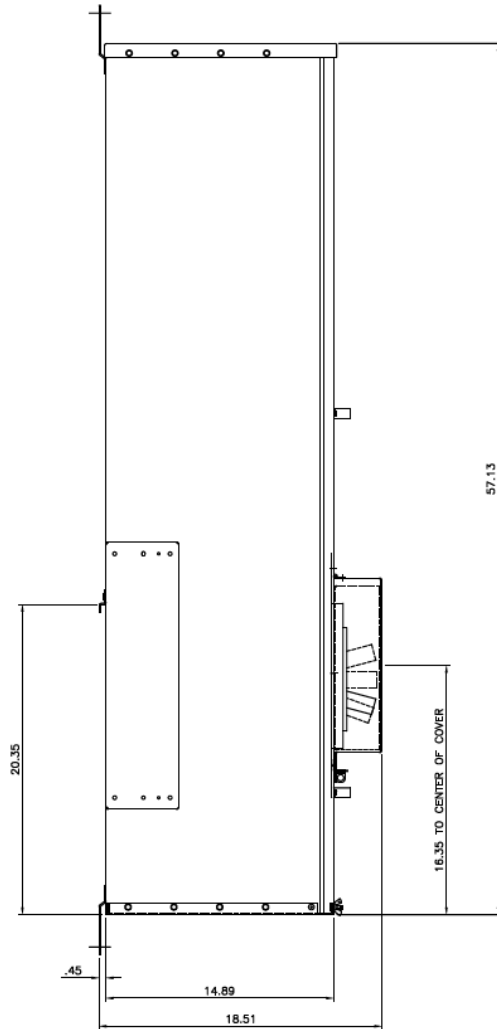
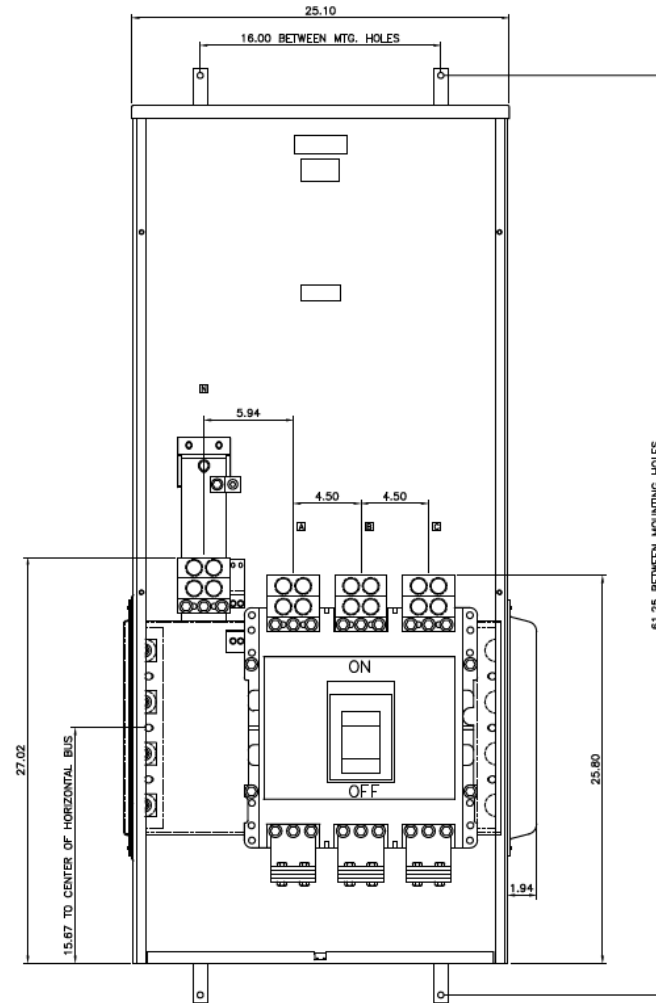


## Side View



Fixed rating plug, not field adjustable

## Front View



**Incoming Cable Sizes:**  
 (4) 500-1000MCM/ Phase&Neutral (AL & CU)

**Notes:**  
 No Knockouts in Endwalls



imagination at work

METER MOD III-1600A MAIN BREAKER SECT N3R ENCL  
 100KAIC 1PH 3W 120/240V TOP ONLY FEED

REF NO	CAT NO	DWG DATE	REV #
96-5558	TMPBT16R	1/8/2015	01