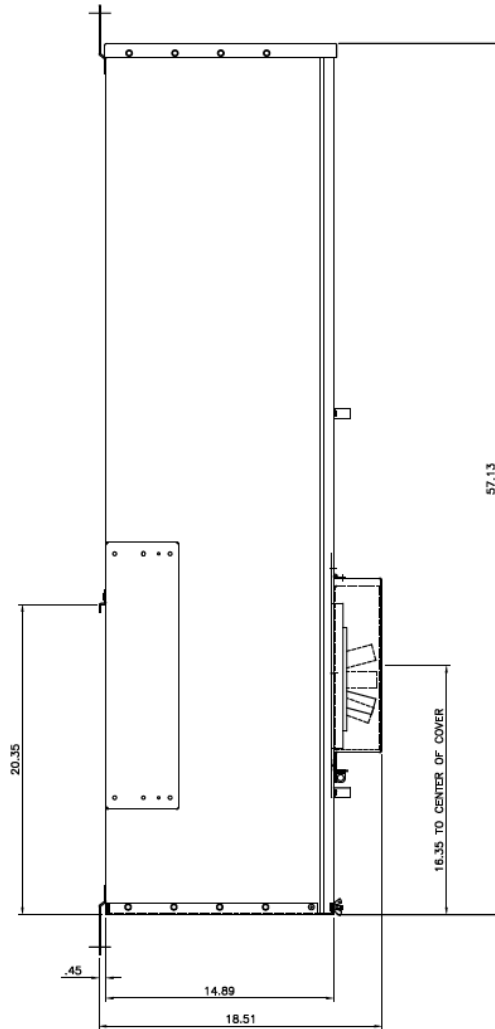


Side View



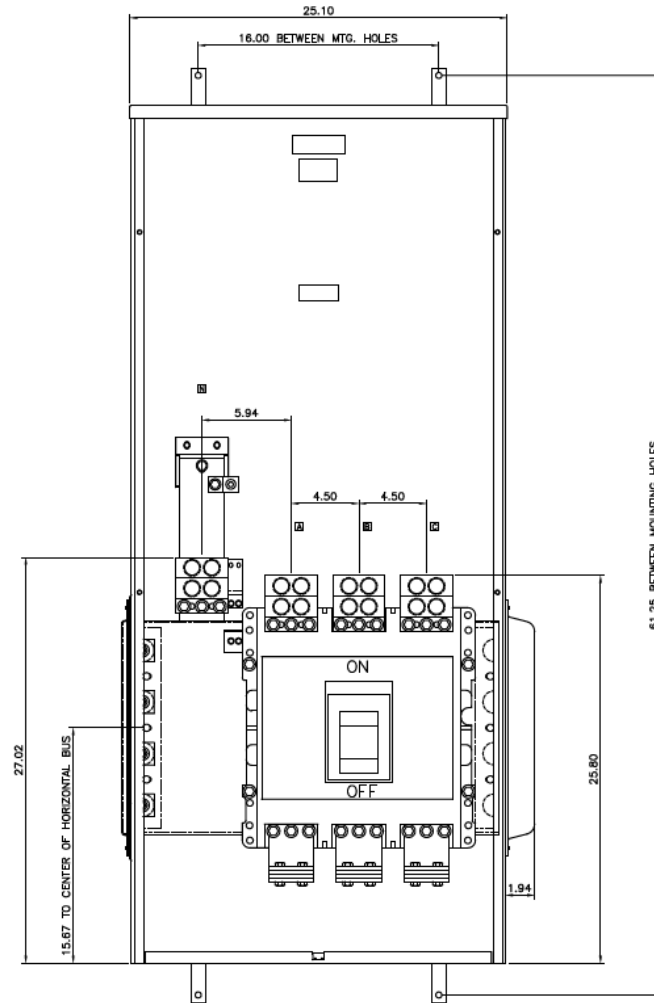
Notes:

Fixed rating plug, not field adjustable

This unit meets NEC 2014 Section 240.87 by providing an arc flash maintenance switch factory installed

No Knockouts in Endwalls

Front View



Incoming Cable Sizes:

(4) 500-1000MCM/ Phase&Neutral (AL & CU)



imagination at work

METER MOD III-1600A MAIN BREAKER SECT N3R ENCL
100KAIC 1PH 3W 120/240V TOP ONLY FEED ARC REDUCTION

REF NO	CAT NO	DWG DATE	REV #
96-5558	TMPBT16RAR	1/28/2016	01