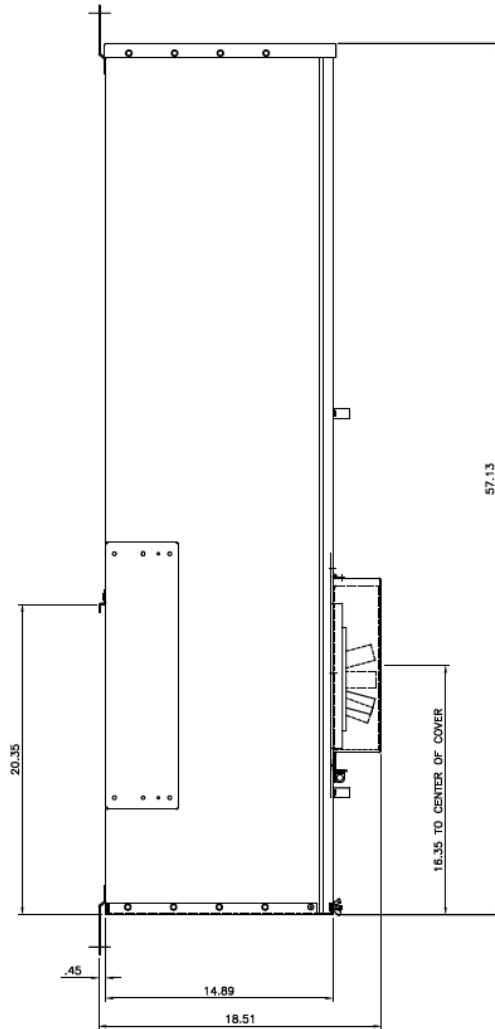
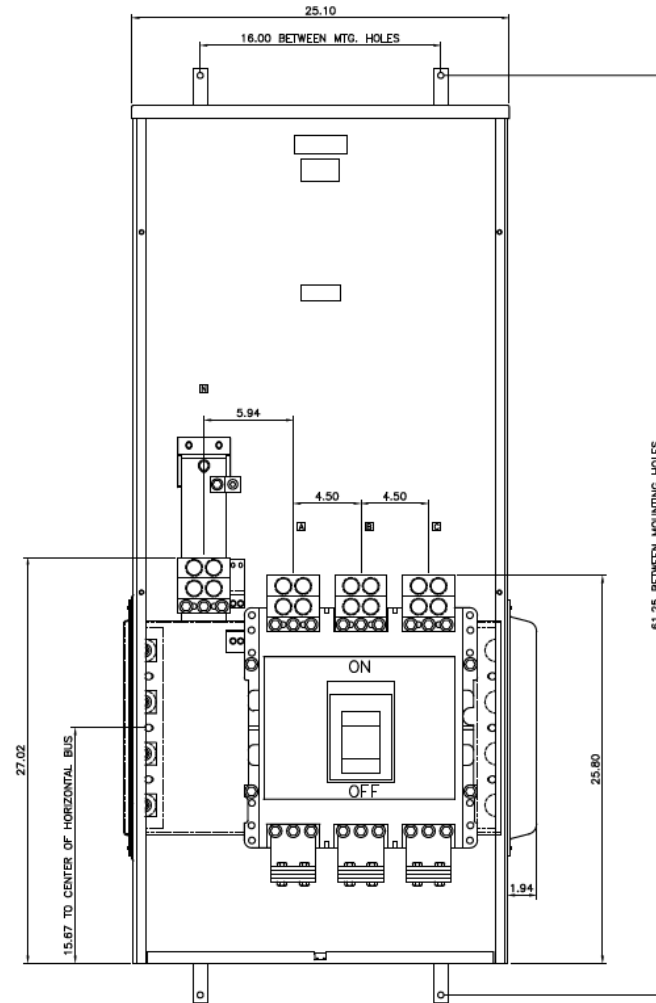


Side View



Front View



Notes:

Fixed rating plug, not field adjustable

This unit meets NEC 2014 Section 240.87 by providing an arc flash maintenance switch factory installed

No Knockouts in Endwalls

This unit has a shunt trip factory installed

Incoming Cable Sizes:

(4) 500-1000MCM/ Phase&Neutral (AL & CU)



imagination at work

METER MOD III-1600A MAIN BREAKER SECT N3R ENCL
100KAIC 1PH3W 120/240V TOP FEED ARC RED W/SHUNT TRIP

REF NO	CAT NO	DWG DATE	REV #
96-5558	TMPBT16RARST	4/1/2020	01