

MAIN SWITCH MODULE

CATALOG NO. TMPFB8R, TMPFB8RWC
 TYPE 3R ENCLOSURE - RAINPROOF - 800AMP.
 120/240V AC 1 PHASE-3 WIRE

For use with TMP or TMPR meter modules and TMP main lug modules. Continuous load current not to exceed 80% of the rating of fuses employed in other than motor circuits.

REPLACEMENT PARTS

End Cap - Right (Deep)	TMECR
End Cap - Left (Flat)	TMECL
Switch Assembly (Complete)	TMPFB8
Front Cover	TMFC1
Drip Hood	TMDH9
Handle	TMPFH1
Hardware Kit	TMPMSK1
Shroud	TMPSH1

**TORQUE MAIN BUS JOINT BOLTS
 300 LB-INS**

Suitable only for bottom feed.

**SUITABLE FOR USE AS
 SERVICE EQUIPMENT**

**USE COPPER OR
 ALUMINUM WIRE
 USE 75°C WIRE**

LUG SPECIFICATIONS

Function	Wire Size CU-AL AWG/MCM	Torque, Lb.-Ins.
Line Terminals	(4) 3/0-750	375
Neutral Terminal	(4) 3/0-750	375
Grounding Terminal	4-300	250

SHORT CIRCUIT CURRENT RATING

This module is U.L. listed for use on circuits delivering not more than 100,000 RMS symmetrical amperes at 240 volts maximum when Class (T or L) fuses are installed. The short circuit rating is limited to the lowest marked short circuit rating of the TMP or TMPR meter module or TMP main lug module.

FUSE INSTALLATION

This switch may use Class (T or L) fuses.

• **CLASS T FUSE INSTALLATION** •

Class T fuses are installed flatwise as shown in Figure 1. Use 1/2 inch bolts and washers provided, discard 1/2 inch nuts. Torque 1/2 inch bolts to 28-31 lb.-ft.

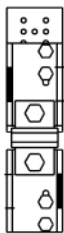


FIGURE 1

• **CONVERSION TO ACCEPT CLASS L FUSES** •

Remove upper fuse connectors, rotate 180 and reinstall into upper set of bus bar mounting holes (using right set of holes in fuse connector) as shown in Figure 2. (Note: 1/4-20 connector mounting screws are self threading.) Torque 1/4-20 connector mounting screws to 80-90 lb-ins.

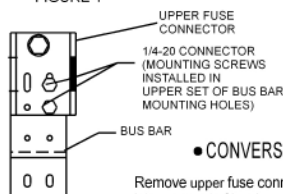


FIGURE 2

• **CLASS L FUSE INSTALLATION** •

Class L fuses are installed onto inside of left flange of fuse connector as shown in Figure 3. Use 1/2 inch bolts, nuts, and lockwashers provided. Torque 1/2 inch nuts to 40-45 lb-ft.

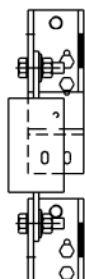


FIGURE 3

