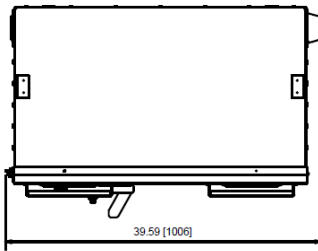
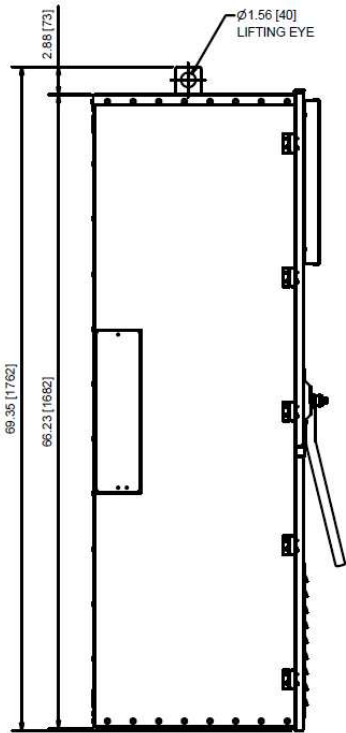


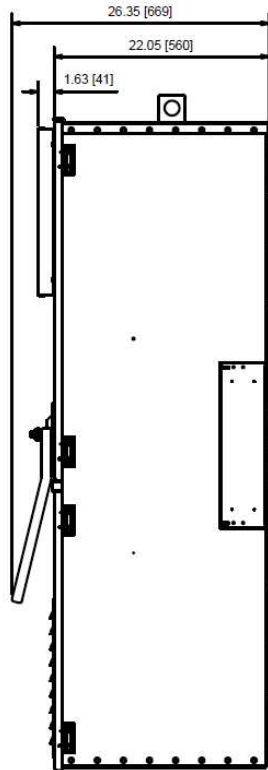
Top View



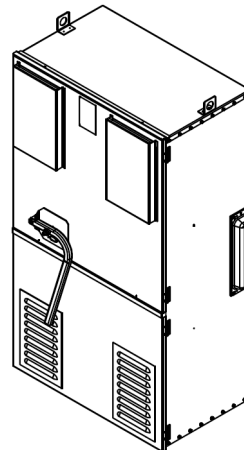
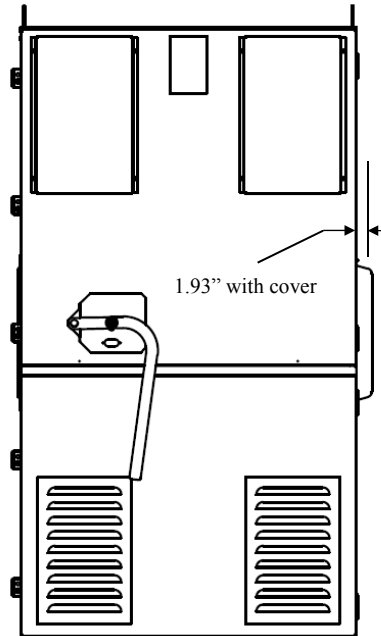
Front View - Left



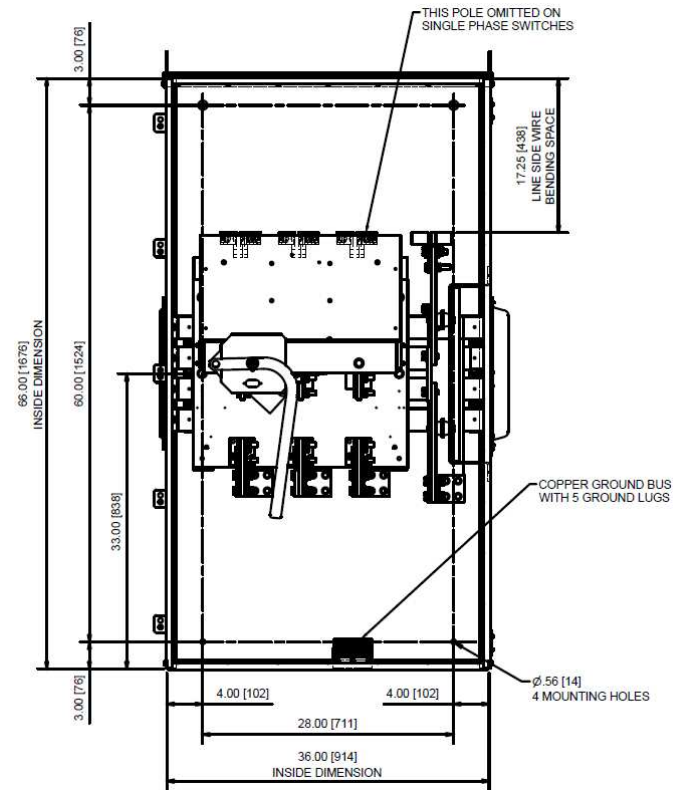
Front View - Right



Front View - Outside



Front View - Inside



Bolted Pressure Switch type unit
 Top of unit (incoming) has blank end walls

- NOTE:
1. FINISH - GRAY BAKED ENAMEL ON GALVANIZED STEEL.
 2. UL LISTED - FILE E44641.
 3. SUITABLE FOR USE AS SERVICE EQUIPMENT.
 4. NEUTRAL INSULATED, BONDABLE.
 5. 100% LOAD BREAK RATED.
 6. SHORT CIRCUIT CURRENT RATINGS:
 100,000 RMS SYMMETRICAL AMPERES, 240 VAC WHEN USED WITH CLASS L FUSES.
 7. DUAL DIMENSIONS, INCHES [MILLIMETERS].

TERMINAL LUGS INFORMATION			
LOCATION	MIN. WIRE SIZE	MAX. WIRE SIZE	TYPE
LINE, LOAD & NEUTRAL LUGS			
4 PER POLE PROVIDED FOR 1200 AMP	(1) 1/0 AWG OR	(1) 750 kcmil OR	AL OR CU
6 PER POLE PROVIDED FOR 1600 AMP	(2) 1/0 AWG	(2) 300 kcmil	
8 PER POLE PROVIDED FOR 2000 AMP			
GROUND LUG (5 PROVIDED)	#6 AWG	250 kcmil	AL OR CU



imagination at work

METER MOD III-1200A MAIN FUSIBLE SWITCH N3R ENCL
 100KAIC 1PH 3W 120/240V TOP ONLY FEED

REF NO	CAT NO	DWG DATE	REV #
96-7084	TMPFT12R	1/8/2015	01