

MAIN SWITCH MODULE

CATALOG NO. TMPFT8R, TMPFT8RWC
TYPE 3R ENCLOSURE - RAINPROOF - 800AMP.
120/240V AC 1 PHASE-3 WIRE

For use with TMP or TMPR meter modules and TMP main lug modules. Continuous load current not to exceed 80% of the rating of fuses employed in other than motor circuits.

REPLACEMENT PARTS	TORQUE MAIN BUS JOINT BOLTS 300 LB-INS																																						
<table style="width: 100%; border-collapse: collapse;"> <tr><td style="width: 50%;">End Cap - Right (Deep)</td><td style="width: 50%;">TMECR</td></tr> <tr><td>End Cap - Left (Flat)</td><td>TMECL</td></tr> <tr><td>Switch Assembly (Complete)</td><td>TMPFTS8</td></tr> <tr><td>Front Cover</td><td>TMFC2</td></tr> <tr><td>Drip Hood</td><td>TMDH9</td></tr> <tr><td>Handle</td><td>TMPFH1</td></tr> <tr><td>Hardware Kit</td><td>TMPMSK1</td></tr> <tr><td>Shroud</td><td>TMPSH1</td></tr> </table>	End Cap - Right (Deep)	TMECR	End Cap - Left (Flat)	TMECL	Switch Assembly (Complete)	TMPFTS8	Front Cover	TMFC2	Drip Hood	TMDH9	Handle	TMPFH1	Hardware Kit	TMPMSK1	Shroud	TMPSH1	<p>Suitable only for top feed. Order rainproof hubs from table below.</p> <table border="1" style="width: 100%; border-collapse: collapse;"> <thead> <tr> <th style="width: 50%;">Conduit Size</th> <th style="width: 50%;">Cat.No.</th> </tr> </thead> <tbody> <tr><td style="text-align: center;">1/2</td><td style="text-align: center;">343L647G3</td></tr> <tr><td style="text-align: center;">3/4</td><td style="text-align: center;">343L647G4</td></tr> <tr><td style="text-align: center;">1</td><td style="text-align: center;">343L647G5</td></tr> <tr><td style="text-align: center;">1-1/4</td><td style="text-align: center;">343L647G6</td></tr> <tr><td style="text-align: center;">1-1/2</td><td style="text-align: center;">343L647G7</td></tr> <tr><td style="text-align: center;">2</td><td style="text-align: center;">343L647G8</td></tr> <tr><td style="text-align: center;">2-1/2</td><td style="text-align: center;">343L647G9</td></tr> <tr><td style="text-align: center;">3</td><td style="text-align: center;">343L647G10</td></tr> <tr><td style="text-align: center;">3-1/2</td><td style="text-align: center;">343L647G11</td></tr> <tr><td style="text-align: center;">4</td><td style="text-align: center;">343L647G12</td></tr> </tbody> </table>	Conduit Size	Cat.No.	1/2	343L647G3	3/4	343L647G4	1	343L647G5	1-1/4	343L647G6	1-1/2	343L647G7	2	343L647G8	2-1/2	343L647G9	3	343L647G10	3-1/2	343L647G11	4	343L647G12
End Cap - Right (Deep)	TMECR																																						
End Cap - Left (Flat)	TMECL																																						
Switch Assembly (Complete)	TMPFTS8																																						
Front Cover	TMFC2																																						
Drip Hood	TMDH9																																						
Handle	TMPFH1																																						
Hardware Kit	TMPMSK1																																						
Shroud	TMPSH1																																						
Conduit Size	Cat.No.																																						
1/2	343L647G3																																						
3/4	343L647G4																																						
1	343L647G5																																						
1-1/4	343L647G6																																						
1-1/2	343L647G7																																						
2	343L647G8																																						
2-1/2	343L647G9																																						
3	343L647G10																																						
3-1/2	343L647G11																																						
4	343L647G12																																						
<p>SUITABLE FOR USE AS SERVICE EQUIPMENT</p>																																							
<p>USE COPPER OR ALUMINUM WIRE USE 75°C WIRE</p>																																							

LUG SPECIFICATIONS

Function	Wire Size CU-AL AWG/MCM	Torque, Lb.-Ins.
Line Terminals	(4) 3/0-750	375
Neutral Terminal	(4) 3/0-750	375
Grounding Terminal	4-300	250

SHORT CIRCUIT CURRENT RATING

This module is U.L. listed for use on circuits delivering not more than 100,000 RMS symmetrical amperes at 240 volts maximum when Class (T or L) fuses are installed. The short circuit rating is limited to the lowest marked short circuit rating of the TMP or TMPR meter module or TMP main lug module.

FUSE INSTALLATION

This switch may use Class (T or L) fuses.

• CLASS T FUSE INSTALLATION •

Class T fuses are installed flatwise as shown in Figure 1. Use 1/2 inch bolts and washers provided, discard 1/2 inch nuts. Torque 1/2 inch bolts to 28-31 lb.-ft.

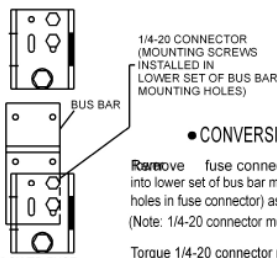


FIGURE 1

• CONVERSION TO ACCEPT CLASS L FUSES •

Remove fuse connectors, rotate 180 and reinstall into lower set of bus bar mounting holes (using right set of holes in fuse connector) as shown in Figure 2. (Note: 1/4-20 connector mounting screws are self threading.)

Torque 1/4-20 connector mounting screws to 80-90 lb-ins.



LOWER FUSE CONNECTOR (rotated 180)

FIGURE 2

• CLASS L FUSE INSTALLATION •

Class L fuses are installed onto left flange of fuse connector as shown in Figure 3. Use 1/2 inch bolts, nuts, and lockwashers provided.

Torque 1/2 inch nuts to 40-45 lb-ft.

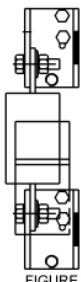


FIGURE 3

GENERAL ELECTRIC