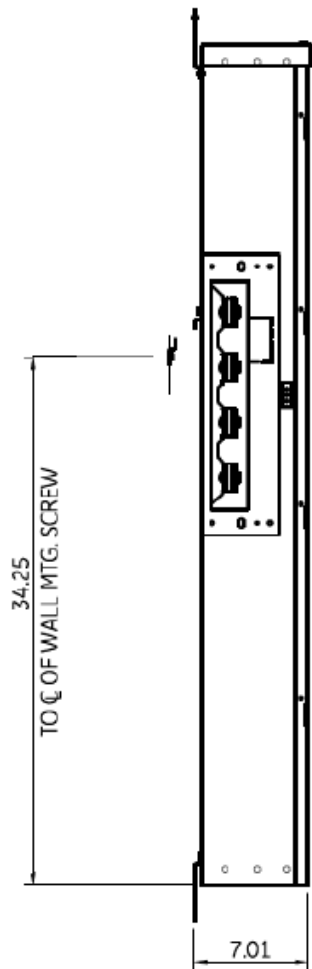
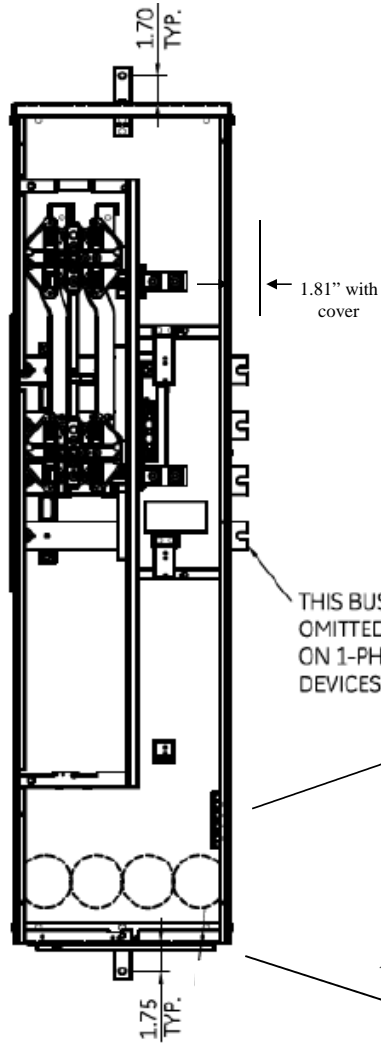


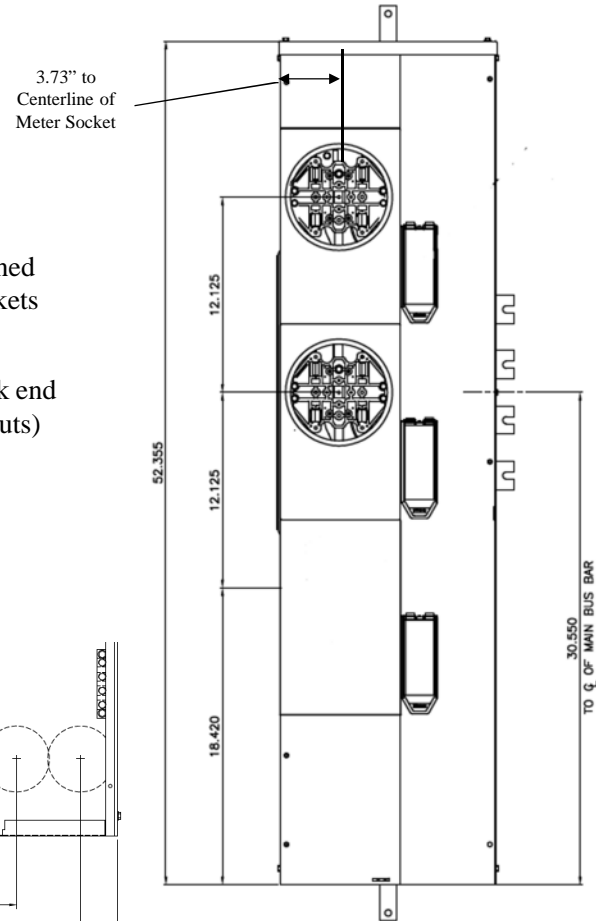
**Side View**



**Front View**

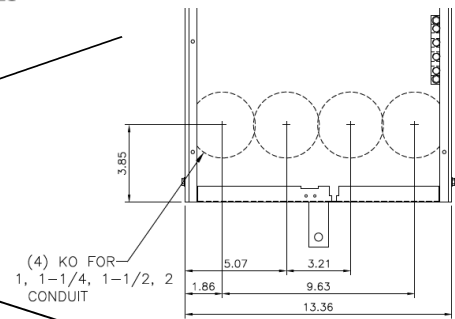


**Front Layout View**



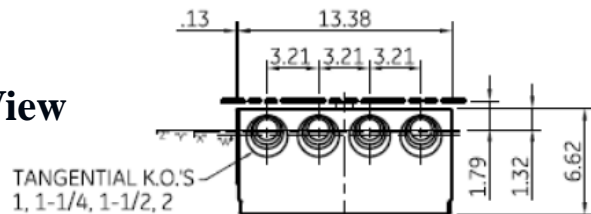
This unit has horned bypass meter sockets

Top view has blank end walls (no knockouts)



(4) KO FOR  
1, 1-1/4, 1-1/2, 2  
CONDUIT

**Bottom View**



TANGENTIAL K.O.'S  
1, 1-1/4, 1-1/2, 2

"Z" =  $\phi$  OF 1" RING  
 "Y" =  $\phi$  OF 1-1/4" RING  
 "X" =  $\phi$  OF 1-1/2" RING  
 "W" =  $\phi$  OF 2" RING



METER MOD III-1PH 1200A HORIZONTAL BUSSING N3R ENCL  
 (2) 200A RINGLESS SOCKETS W/ HORNED BYPASS

| REF NO  | CAT NO       | DWG DATE | REV # |
|---------|--------------|----------|-------|
| 96-4357 | TMPR12220RHB | 1/8/2015 | 01    |