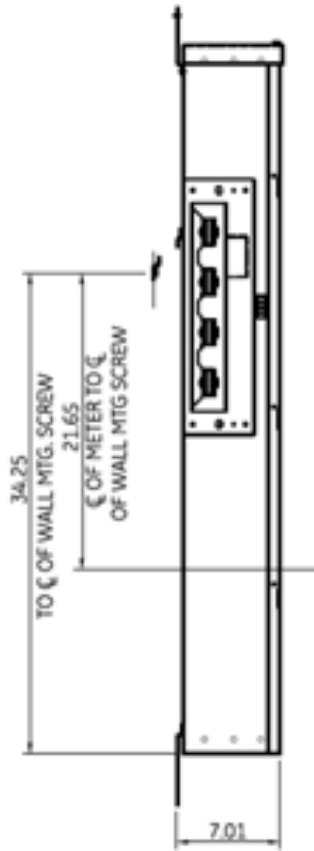
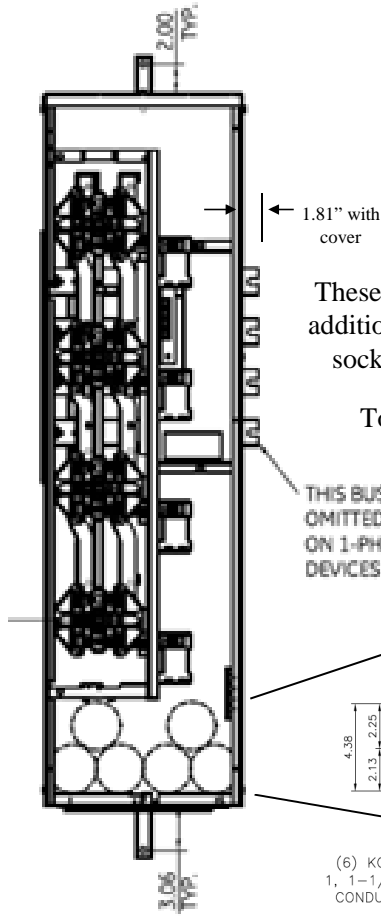


Side View



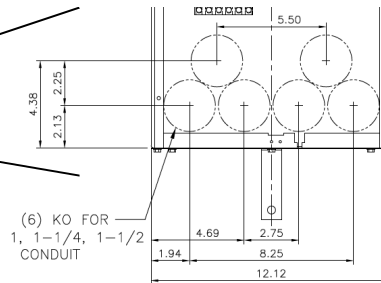
Front View



Notes:

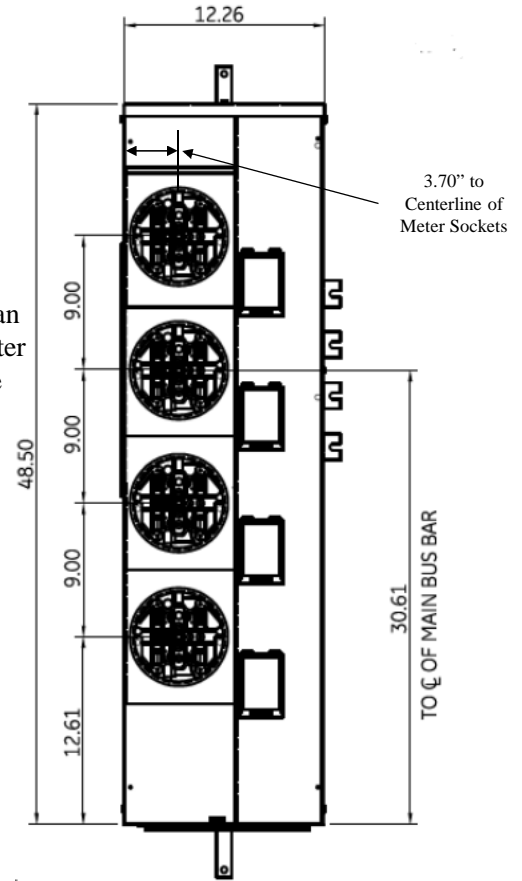
These are MEG approved units have an additional cotter pin that keeps the meter socket from detaching from the base

Top view has blank end walls (no knockouts)



(6) KO FOR 1, 1-1/4, 1-1/2 CONDUIT

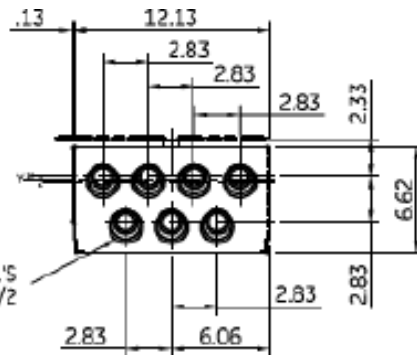
Front Layout View



Bottom View

Z = C OF 1-1/2" RING
 Y = C OF 1-1/4" RING
 X = C OF 3/4" & 1" RING

TANGENTIAL K.O.'S
 3/4, 1, 1-1/4, 1-1/2



imagination at work

METER MOD III - 1PH 1200A HORIZONTAL BUSSING
 (4)125A RINGLESS SOCKETS-N3R ENCL - MEG APPROVED

REF NO	CAT NO	DWG DATE	REV #
96-4356	TMPR12412RF	1/8/2015	01