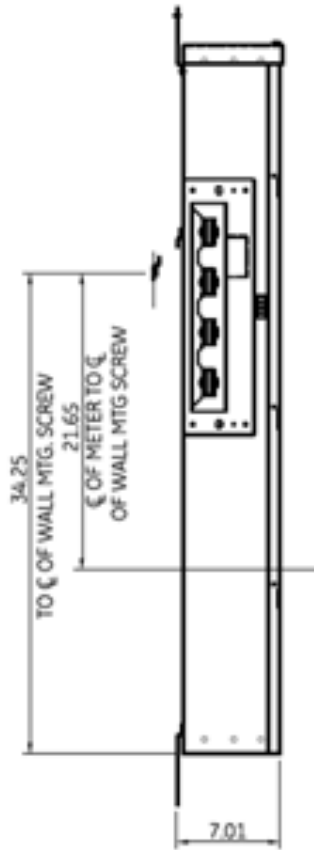
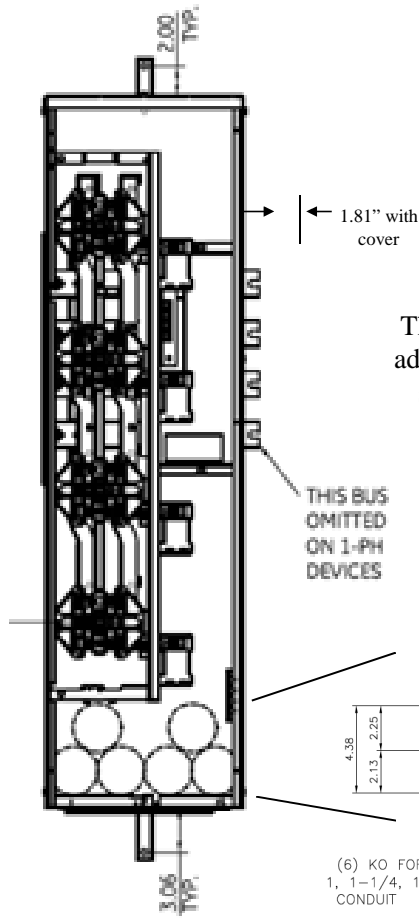


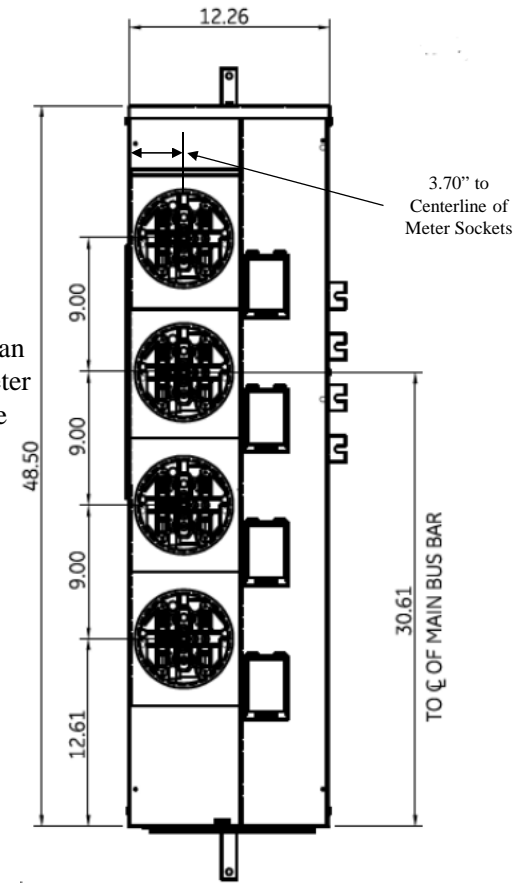
**Side View**



**Front View**



**Front Layout View**

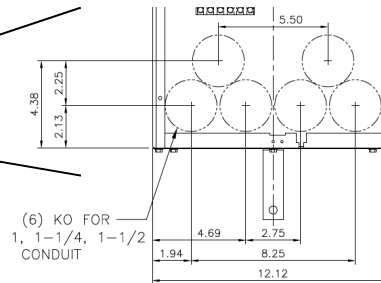


**Notes:**

These are MEG approved units have an additional cotter pin that keeps the meter socket from detaching from the base

This unit has horned bypass meter sockets

Top view has blank end walls (no knockouts)

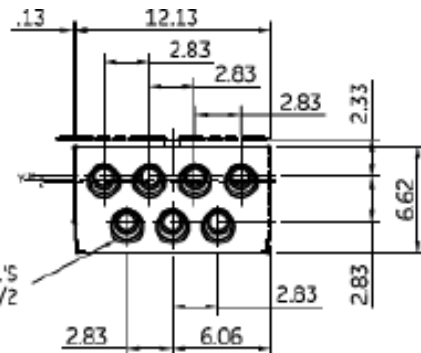


(6) KO FOR 1, 1-1/4, 1-1/2 CONDUIT

**Bottom View**

Z=C OF 1-1/2" RING  
Y=C OF 1-1/4" RING  
X=C OF 3/4" & 1" RING

TANGENTIAL K.O.'S  
3/4, 1, 1-1/4, 1-1/2



imagination at work

METER MOD III-1PH 1200A HORIZONTAL BUSSING N3R ENCL (4)125A RINGLESS SOCKETS W/ HORNED BYPASS-MEG APPROVED

REF NO	CAT NO	DWG DATE	REV #
96-4356	TMPR12412RHBF	1/8/2015	01