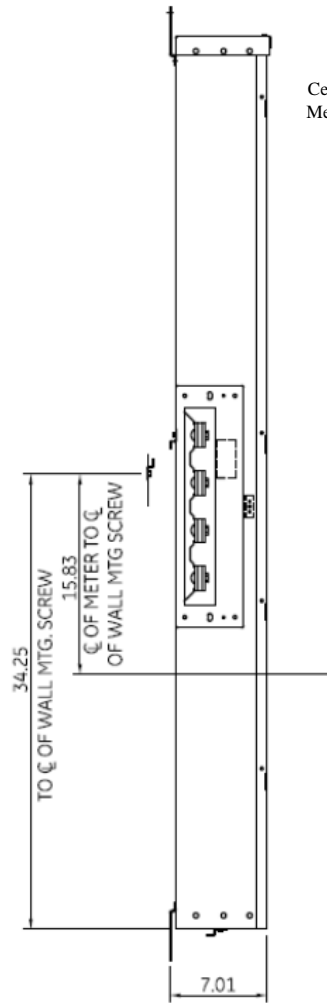
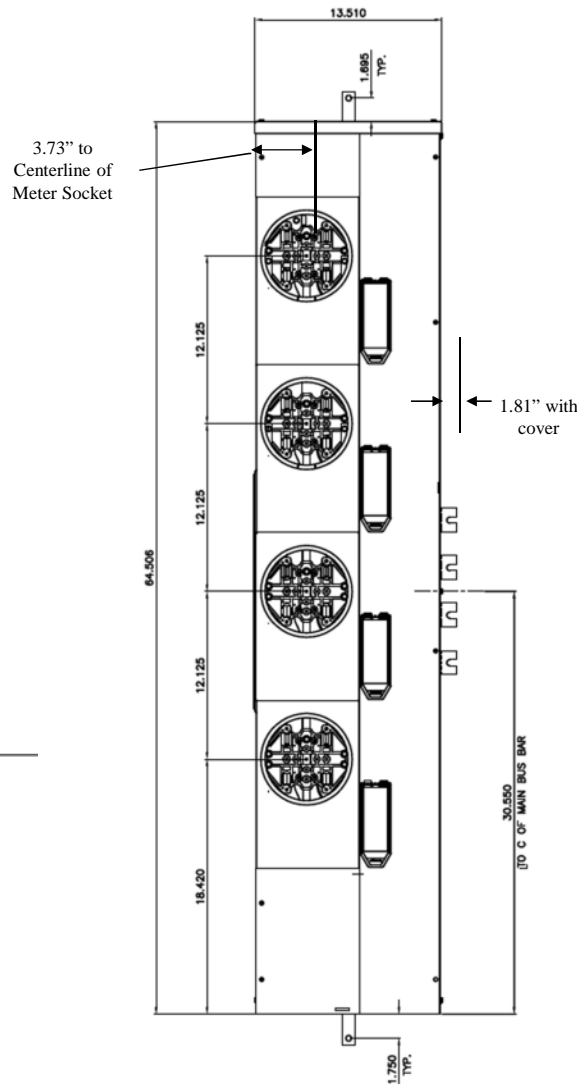


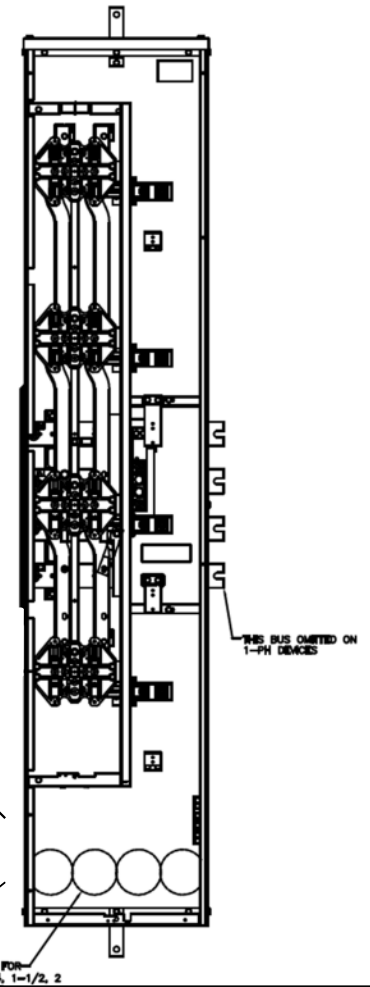
Side View



Front Layout View



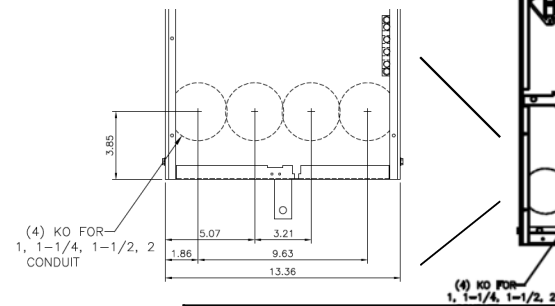
Front View



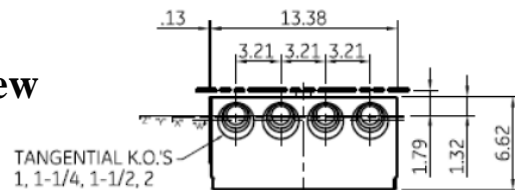
Notes:

These are MEG approved units have an additional cotter pin that keeps the meter socket from detaching from the base

Top view has blank end walls (no knockouts)



Bottom View



"Z" = C OF 1" RING
 "Y" = C OF 1-1/4" RING
 "X" = C OF 1-1/2" RING
 "W" = C OF 2" RING

imagination at work

METER MOD III - 1PH 1200A HORIZONTAL BUSSING
 (4)200A RINGLESS SOCKETS-N3R ENCLOSURE-MEG APPROVED

REF NO	CAT NO	DWG DATE	REV #
96-4357	TMPR12420RF	1/8/2015	01