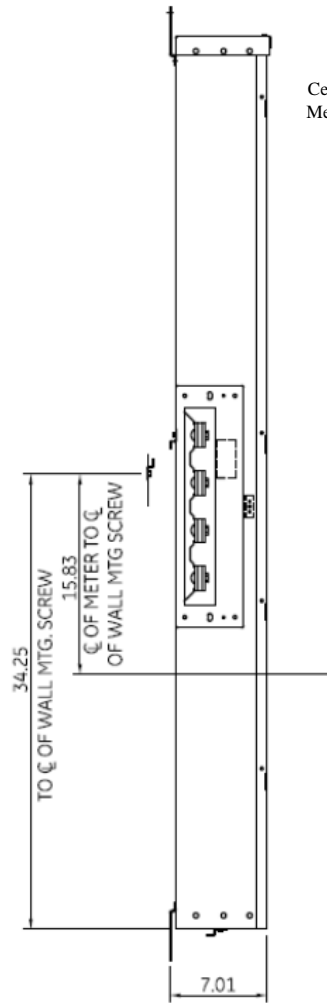
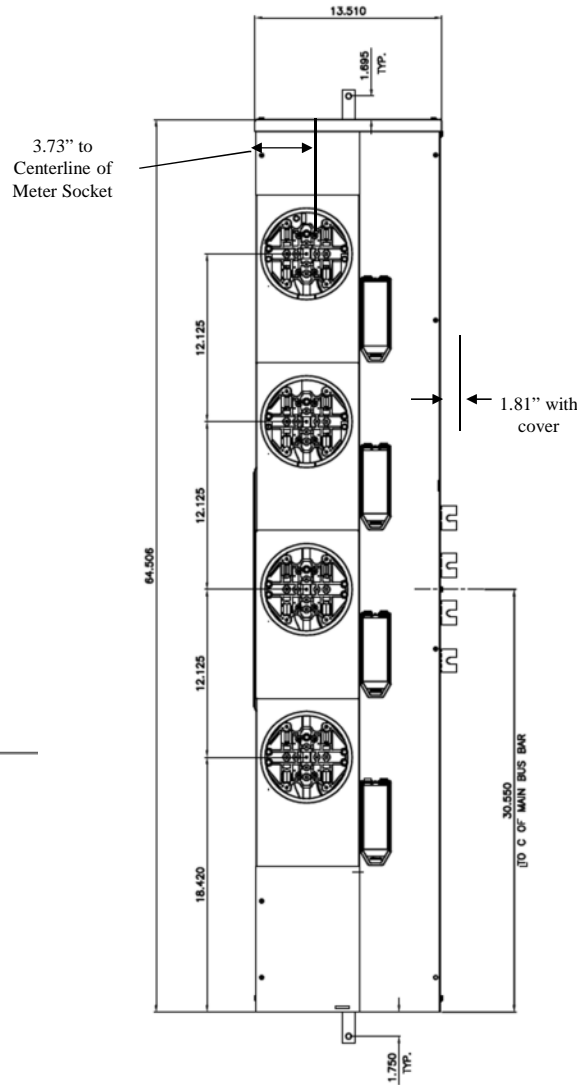


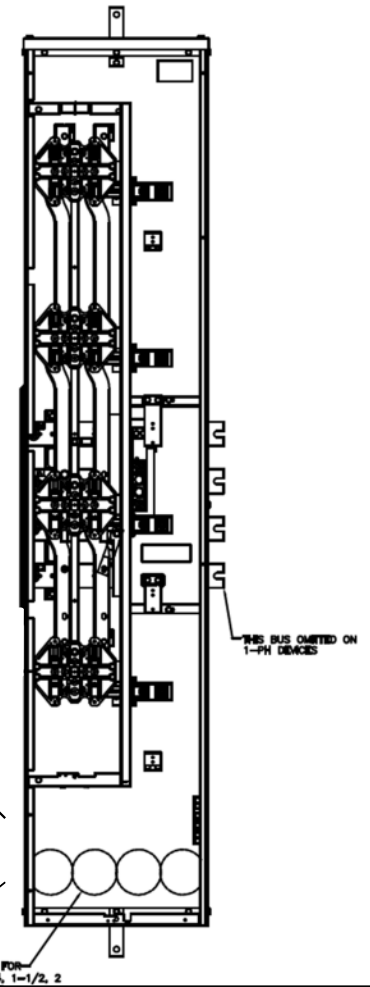
Side View



Front Layout View



Front View

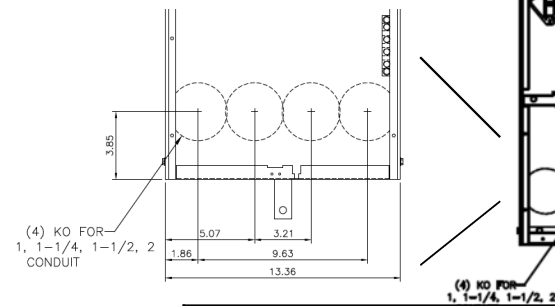


Notes:

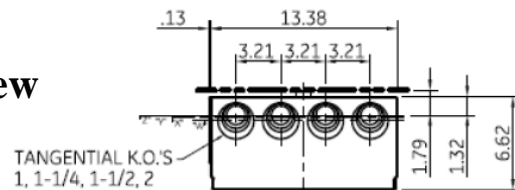
These are MEG approved units have an additional cotter pin that keeps the meter socket from detaching from the base

Top view has blank end walls (no knockouts)


This unit has horned bypass meter sockets



Bottom View



"Z" = C OF 1" RING
 "Y" = C OF 1-1/4" RING
 "X" = C OF 1-1/2" RING
 "W" = C OF 2" RING

 **imagination at work**

METER MOD III-1PH 1200A HORIZONTAL BUSSING N3R ENCL
 (4)200A RINGLESS SOCKETS W/ HORNED BYPASS-MEG APPROVED

REF NO	CAT NO	DWG DATE	REV #
96-4357	TMPR12420RHBF	1/8/2015	01