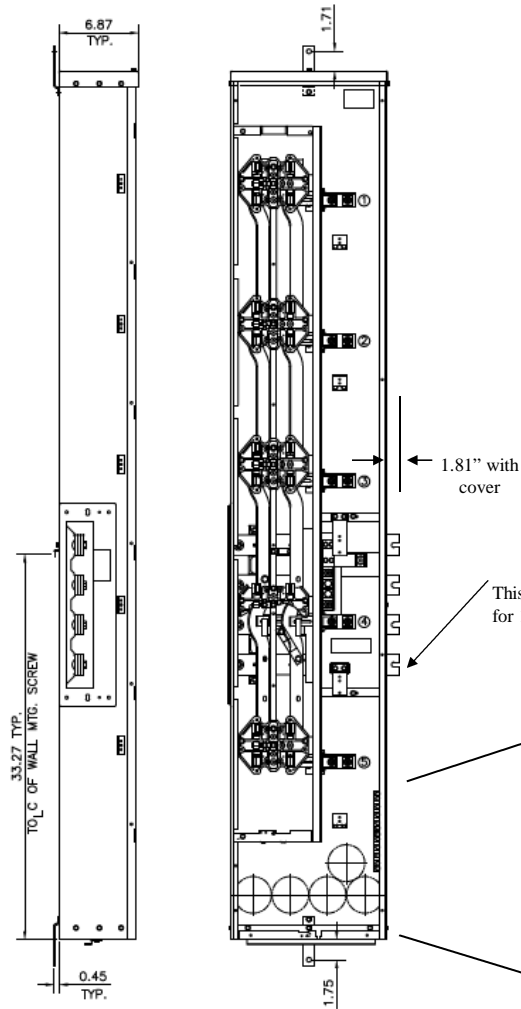
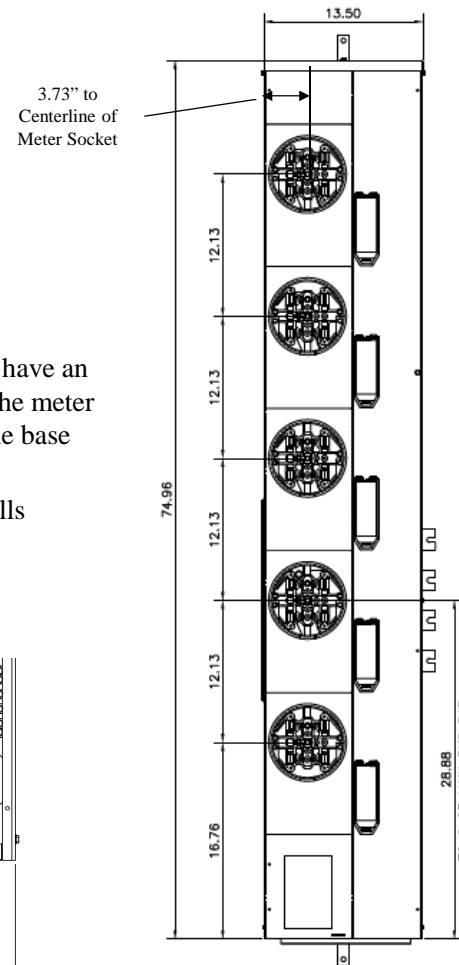


**Side View Front View**



**Front Layout View**



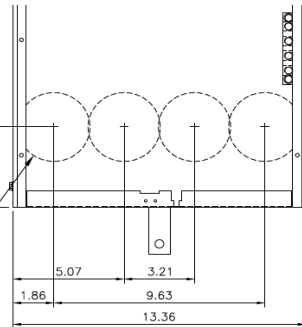
**Notes:**

These are MEG approved units have an additional cotter pin that keeps the meter socket from detaching from the base

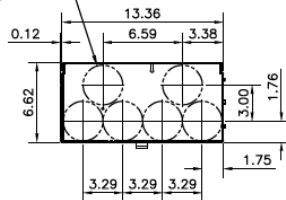
Top view has blank end walls (no knockouts)

This bus omitted for 1PH devices

(4) KO FOR  
1, 1-1/4, 1-1/2, 2  
CONDUIT



(6) CONCENTRIC K.O.'S  
1", 1-1/4", 1-1/2", 2"



**Bottom View**



imagination at work

METER MOD III - 1PH 1200A HORIZONTAL BUSSING  
(5)200A RINGLESS SOCKETS-N3R ENCL-MEG APPROVED

REF NO	CAT NO	DWG DATE	REV #
96-6084	TMPR12520RF	1/8/2015	01